



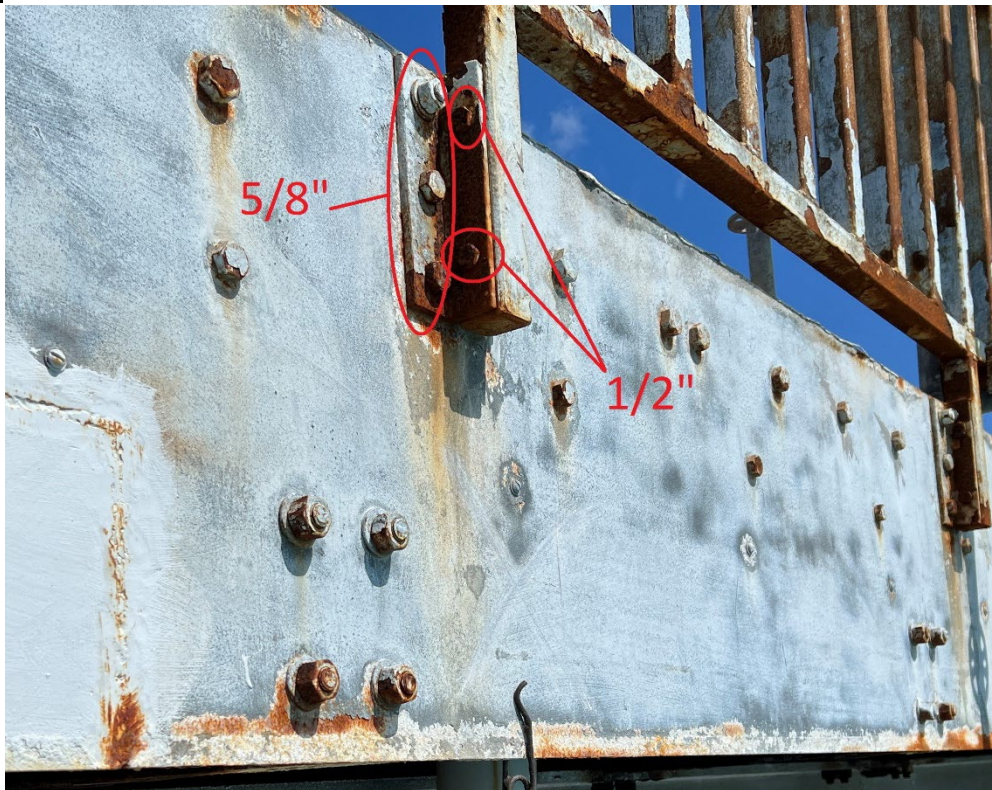
GOVERNMENT OF BERMUDA

Ministry of Public Works

Department of Works and Engineering

2002/2003 Deck Repair

Photographs



Photograph 1 – Bolt clarification



Photograph 2 – Excavator removing concrete from troughs



Photograph 3 – Chunks of concrete during removal, approx. 8" long



Photograph 4 – Concrete removal



Photograph 5 – Deck cleaning



Photograph 6 – Bare troughing



Photograph 7 – Span end plates



Photograph 8 – Concrete reinstatement