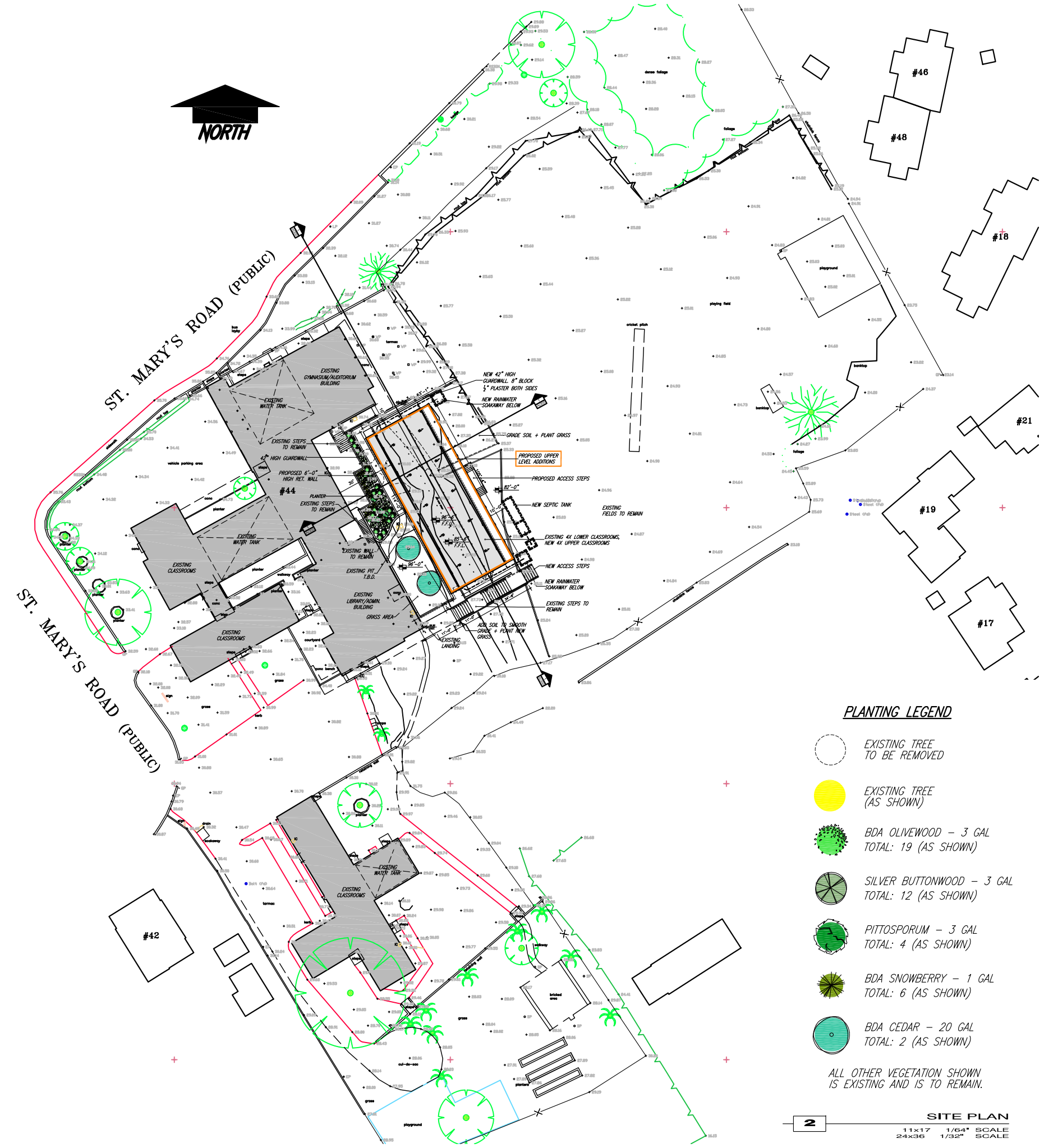


**1** LOCATION PLAN  
11x17 1/40" SCALE  
24x36 1/20" SCALE



EXISTING SITE PHOTOS



**2** SITE PLAN  
11x17 1/64" SCALE  
24x36 1/32" SCALE



**GENERAL NOTES**

DO NOT SCALE DRAWINGS  
ANY MISSING OR UNCLEAR DIMENSIONS TO BE REPORTED TO CTX FOR CLARIFICATION  
REFER TO STRUCTURAL ENGINEER NOTES FOR ALL DRAWINGS  
REFER TO MECHANICAL ENGINEERING PLANS FOR PLUMBING AND AIR CONDITIONING SYSTEMS INFORMATION  
REFER TO ELECTRICAL ENGINEERING DRAWINGS FOR ELECTRICAL LAYOUT AND SYSTEM INFORMATION

**ANY DEVIATION FROM PLANNING APPROVED DOCUMENTS REQUIRES THE SUBMISSION OF A PLANNING REVISION NO EXCEPTIONS**

-ZONING INSTITUTIONAL, RECREATION AGRICULTURAL RESERVE

-LOT SIZE 179,224 SQ FT

-SITE COVERAGE  
EXISTING - 23,365 SQ FT  
PROPOSED - 596 SQ FT  
TOTAL - 23,961 SQ FT  
EXIST. HARD SURF. - 57,220 SQ FT  
PROP. HARD SURF. - 909 SQ FT  
TOTAL HARD SURF. - 58,129 SQ FT

-SITE COVERAGE PERCENTAGE  
EXISTING - 13.04%  
PROPOSED - 0.33%  
TOTAL - 13.37%  
EXIST. HARD SURF. - 31.93%  
PROP. HARD SURF. - 0.50%  
TOTAL HARD SURF. - 32.43%

-FLOOR AREA  
EXISTING - 26,851 SQ FT  
PROPOSED - 3,120 SQ FT  
TOTAL - 29,971 SQ FT

-TANK CAPACITY  
EXISTING - 617,700 GAL  
PROPOSED - 0 GAL  
TOTAL - 617,700 GAL

-NUMBER OF CESSPITS  
EXISTING - 2  
PROPOSED - -1, +1  
TOTAL - 3

-AREA OF ROOF  
EXISTING - 23,365 SQ FT  
PROPOSED - 476 SQ FT  
TOTAL - 23,841 SQ FT

**PLANTING LEGEND**

- EXISTING TREE TO BE REMOVED
- EXISTING TREE (AS SHOWN)
- BDA OLIVEWOOD - 3 GAL TOTAL: 19 (AS SHOWN)
- SILVER BUTTWOOD - 3 GAL TOTAL: 12 (AS SHOWN)
- PITTOSPORUM - 3 GAL TOTAL: 4 (AS SHOWN)
- BDA SNOWBERRY - 1 GAL TOTAL: 6 (AS SHOWN)
- BDA CEDAR - 20 GAL TOTAL: 2 (AS SHOWN)

ALL OTHER VEGETATION SHOWN IS EXISTING AND IS TO REMAIN.

FEB 21 2024

SITE PLAN HAS BEEN PREPARED FROM EXISTING DRAWINGS & NOT A RECENT SURVEY. ALL DIMENSIONS TO BE VERIFIED ON SITE.

**REVISIONS**

**PURVIS PRIMARY**

**#44 ST. MARY'S ROAD, WARWICK BERMUDA**

TECHNICIAN: BMS  
REF: sDs 05449  
DATE: MAR 2023  
SCALE: AS NOTED



ROAD



**GENERAL NOTES**  
 DO NOT SCALE DRAWINGS  
 ANY MISSING OR UNCLEAR DIMENSIONS TO BE REPORTED TO CTX FOR CLARIFICATION  
 REFER TO STRUCTURAL ENGINEER NOTES FOR ALL DRAWINGS  
 REFER TO MECHANICAL ENGINEERING PLANS FOR PLUMBING AND AIR CONDITIONING SYSTEMS INFORMATION  
 REFER TO ELECTRICAL ENGINEERING DRAWINGS FOR ELECTRICAL LAYOUT AND SYSTEM INFORMATION  
**ANY DEVIATION FROM PLANNING APPROVED DOCUMENTS REQUIRES THE SUBMISSION OF A PLANNING REVISION NO EXCEPTIONS**

**PLANTING LEGEND**

- EXISTING TREE TO BE REMOVED
- EXISTING TREE (AS SHOWN)
- BDA OLIVEWOOD - 3 GAL TOTAL: 19 (AS SHOWN)
- SILVER BUTTWOOD - 3 GAL TOTAL: 12 (AS SHOWN)
- PITTOSPORUM - 3 GAL TOTAL: 4 (AS SHOWN)
- BDA SNOWBERRY - 1 GAL TOTAL: 6 (AS SHOWN)
- BDA CEDAR - 20 GAL TOTAL: 2 (AS SHOWN)

ALL OTHER VEGETATION SHOWN IS EXISTING AND IS TO REMAIN.

FEB 21 2024

SITE PLAN HAS BEEN PREPARED FROM EXISTING DRAWINGS & NOT A RECENT SURVEY. ALL DIMENSIONS TO BE VERIFIED ON SITE.

**REVISIONS**

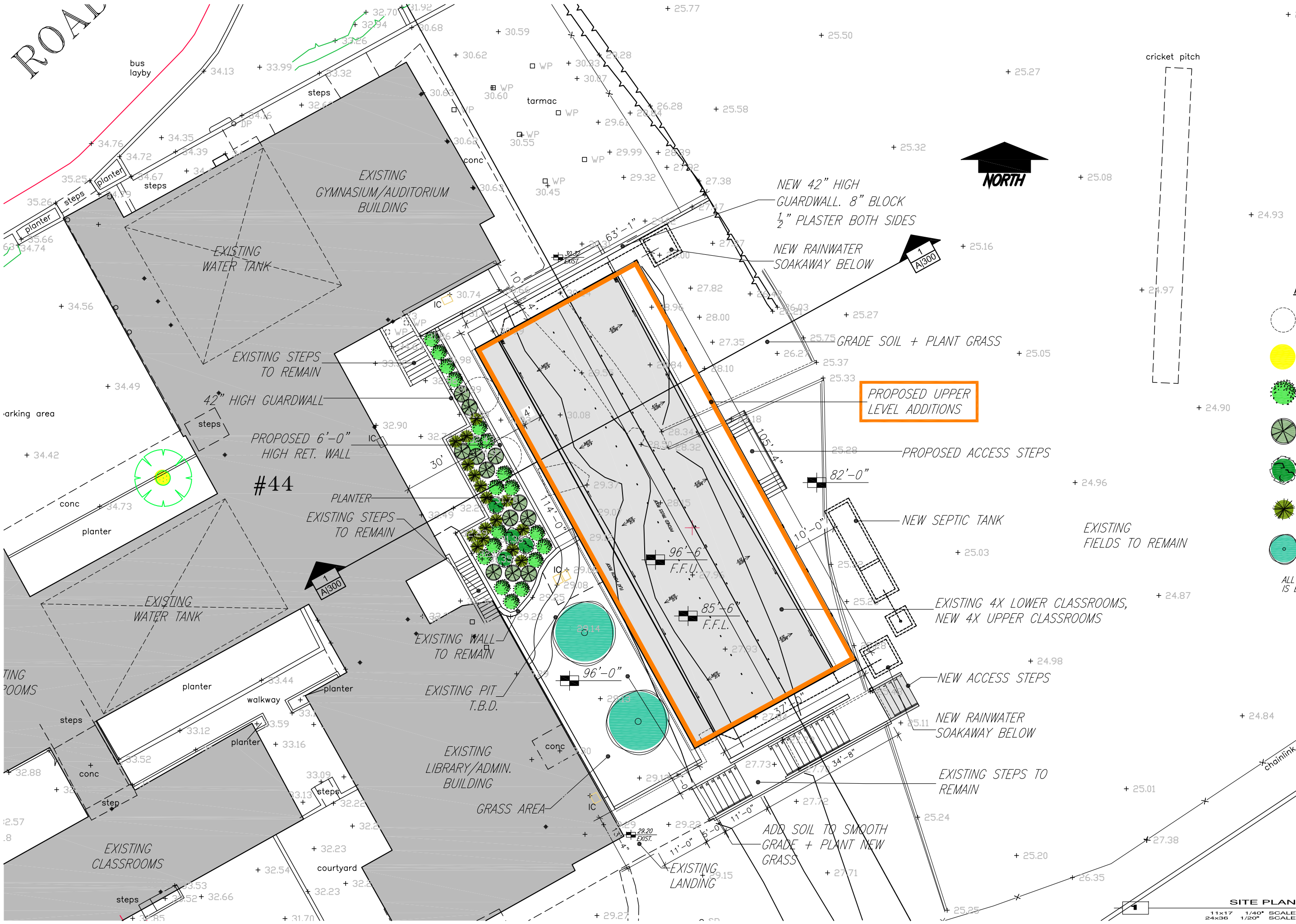
**PURVIS PRIMARY**

#44 ST. MARY'S ROAD, WARWICK BERMUDA

TECHNICIAN:  
BMS  
 REF:  
SDs 05449  
 DATE:  
MAR 2023  
 SCALE:  
AS NOTED

**A/101**

CTX@LOGIC.BM | 1-441-232-6038

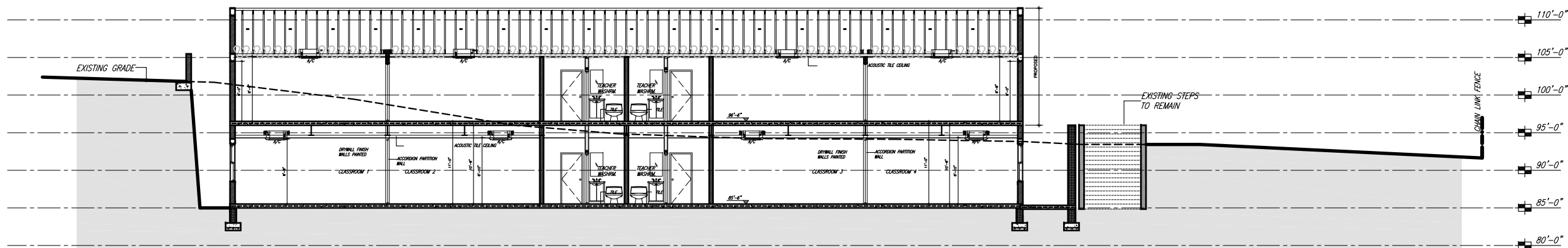


**SITE PLAN**  
 11x17 1/40" SCALE  
 24x36 1/20" SCALE

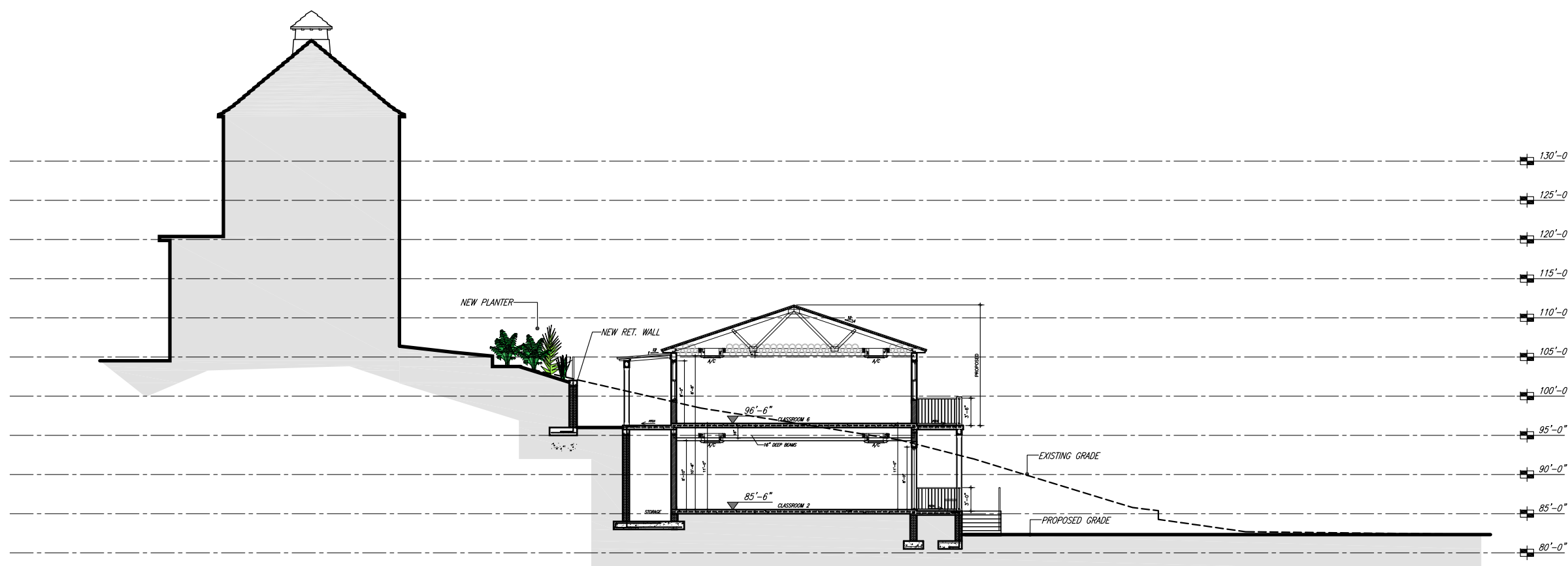
**GENERAL NOTES**

DO NOT SCALE DRAWINGS  
 ANY MISSING OR UNCLEAR DIMENSIONS TO  
 BE REPORTED TO CTX FOR CLARIFICATION  
 REFER TO STRUCTURAL ENGINEER NOTES  
 FOR ALL DRAWINGS  
 REFER TO MECHANICAL ENGINEERING  
 PLANS FOR PLUMBING AND AIR  
 CONDITIONING SYSTEMS INFORMATION  
 REFER TO ELECTRICAL ENGINEERING  
 DRAWINGS FOR ELECTRICAL LAYOUT AND  
 SYSTEM INFORMATION

**ANY DEVIATION FROM  
 PLANNING APPROVED  
 DOCUMENTS REQUIRES  
 THE SUBMISSION OF A  
 PLANNING REVISION  
 NO EXCEPTIONS**



**1** SITE SECTION 1  
 11x17 1/16" SCALE  
 24x36 1/8" SCALE



**2** SITE SECTION 2  
 11x17 1/16" SCALE  
 24x36 1/8" SCALE

FEB 21 2024

SITE PLAN HAS BEEN PREPARED  
 FROM EXISTING DRAWINGS & NOT A  
 RECENT SURVEY. ALL DIMENSIONS TO  
 BE VERIFIED ON SITE

**REVISIONS**

**PURVIS PRIMARY**

**#44 ST. MARY'S ROAD,  
 WARWICK  
 BERMUDA**

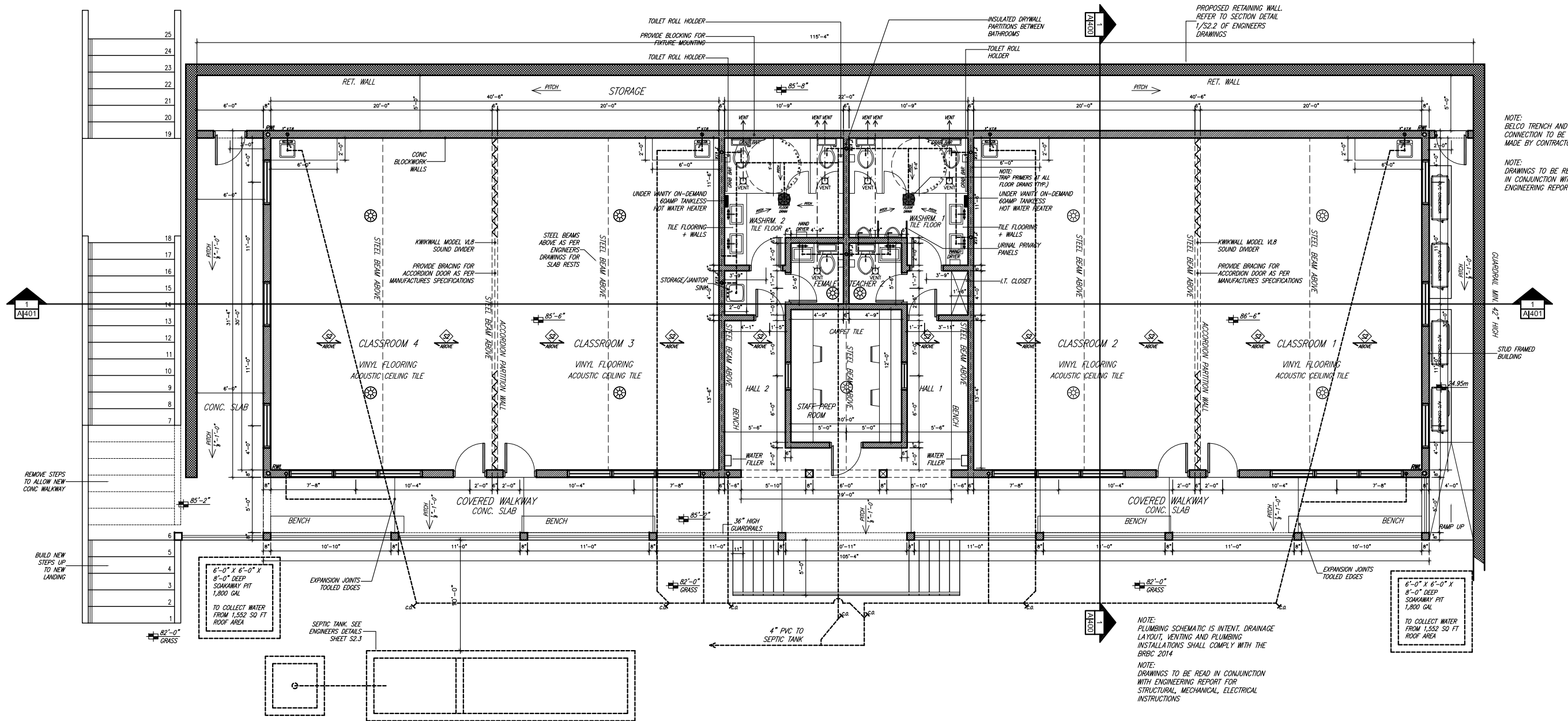
TECHNICIAN:  
 BMS  
 REF:  
 sDs 05449  
 DATE:  
 MAR 2023  
 SCALE:  
 AS NOTED



**GENERAL NOTES**

DO NOT SCALE DRAWINGS  
ANY MISSING OR UNCLEAR DIMENSIONS TO BE REPORTED TO CTX FOR CLARIFICATION  
REFER TO STRUCTURAL ENGINEER NOTES FOR ALL DRAWINGS  
REFER TO MECHANICAL ENGINEERING PLANS FOR PLUMBING AND AIR CONDITIONING SYSTEMS INFORMATION  
REFER TO ELECTRICAL ENGINEERING DRAWINGS FOR ELECTRICAL LAYOUT AND SYSTEM INFORMATION

**ANY DEVIATION FROM PLANNING APPROVED DOCUMENTS REQUIRES THE SUBMISSION OF A PLANNING REVISION NO EXCEPTIONS**



FEB 21 2024

**REVISIONS**

**PURVIS PRIMARY**

#44 ST. MARY'S ROAD,  
WARWICK  
BERMUDA

TECHNICIAN:  
BMS  
REF:  
SDs 05449  
DATE:  
MAR 2023  
SCALE:  
AS NOTED

**1**  
LOWER PLAN  
11x17 1/10" SCALE  
24x36 1/5" SCALE

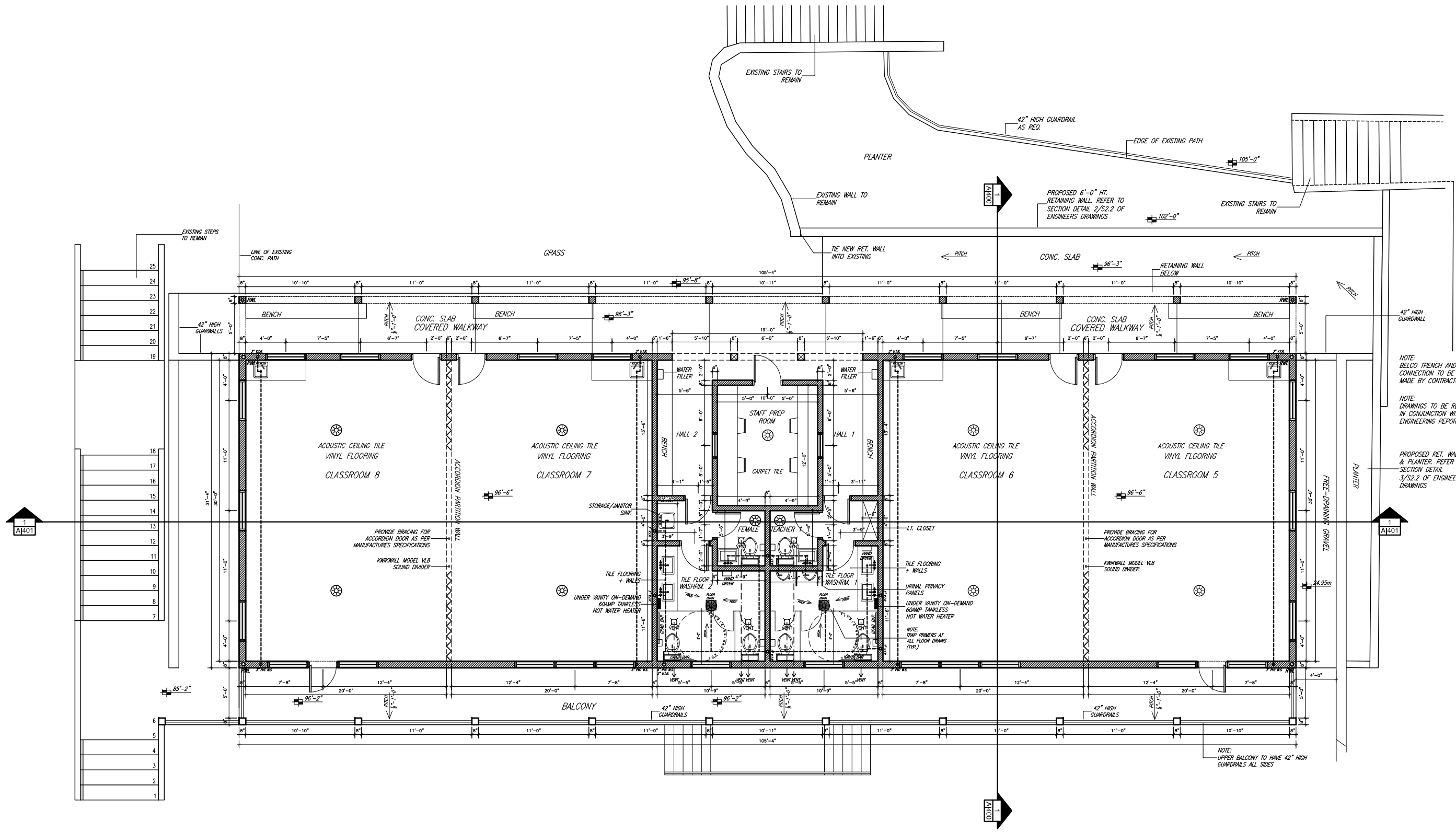
**A/201**



**GENERAL NOTES**

DO NOT SCALE DIMENSIONS  
ANY MISSING OR UNCLEAR DIMENSIONS TO BE REPORTED TO CTX FOR CLARIFICATION  
REFER TO STRUCTURAL ENGINEER NOTES FOR ALL DRAWINGS  
REFER TO MECHANICAL ENGINEERING PLANS FOR PLUMBING AND AIR CONDITIONING SYSTEMS INFORMATION  
REFER TO ELECTRICAL ENGINEERING DRAWINGS FOR ELECTRICAL LAYOUT AND SYSTEM INFORMATION

ANY DEVIATION FROM PLANNING APPROVED DOCUMENTS REQUIRES THE SUBMISSION OF A PLANNING REVISION NO EXCEPTIONS



FEB 21 2024

**REVISIONS**

**PURVIS PRIMARY**

#44 ST. MARY'S ROAD,  
WARWICK  
BERMUDA

TECHNICIAN:  
BMS  
REF:  
SDs 05449  
DATE:  
MAR 2023  
SCALE:  
AS NOTED

**1** UPPER PLAN  
11x17 1/10" SCALE  
24x36 1/5" SCALE

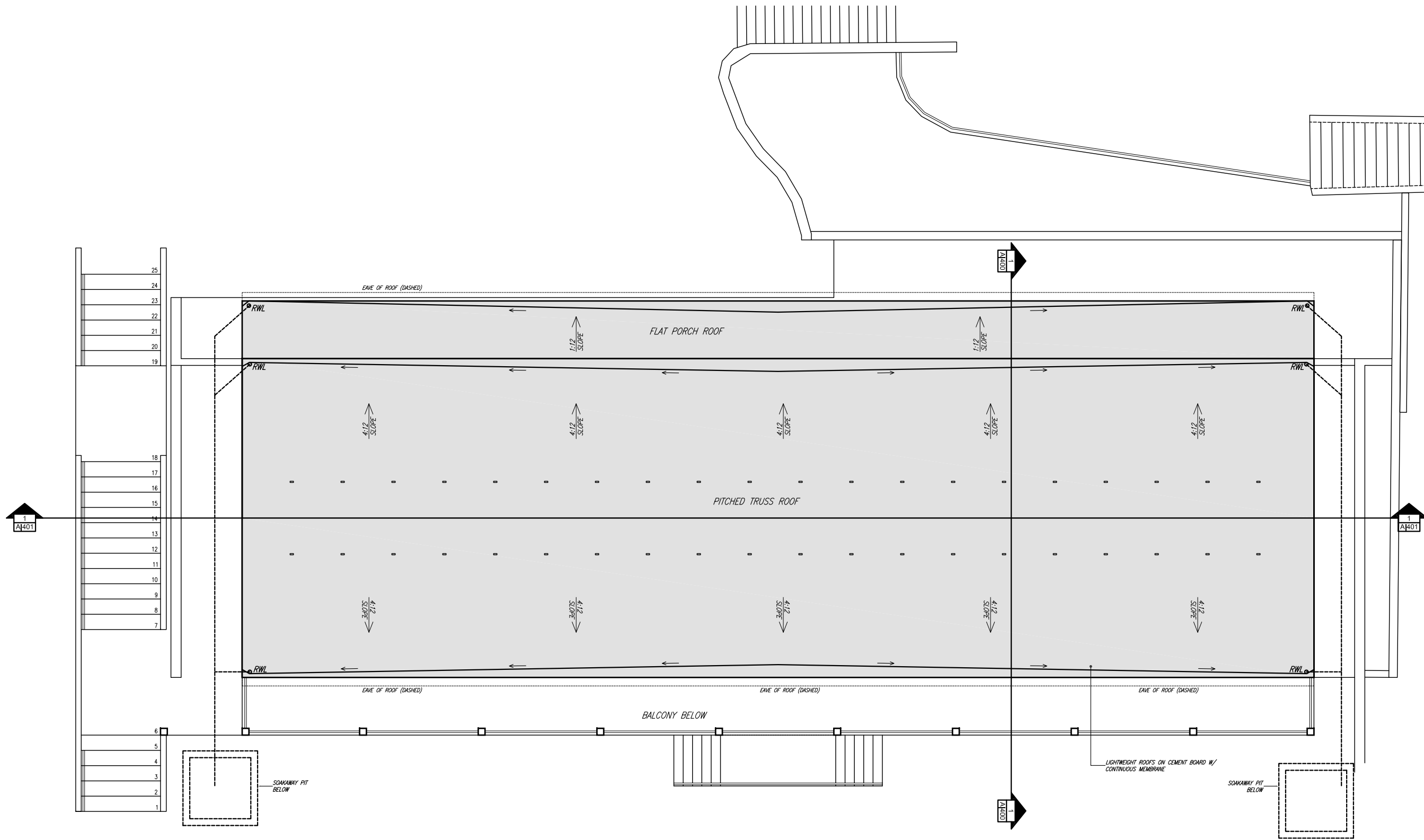
**A/201a**



**GENERAL NOTES**

DO NOT SCALE DRAWINGS  
ANY MISSING OR UNCLEAR DIMENSIONS TO BE REPORTED TO CTX FOR CLARIFICATION  
REFER TO STRUCTURAL ENGINEER NOTES FOR ALL DRAWINGS  
REFER TO MECHANICAL ENGINEERING PLANS FOR PLUMBING AND AIR CONDITIONING SYSTEMS INFORMATION  
REFER TO ELECTRICAL ENGINEERING DRAWINGS FOR ELECTRICAL LAYOUT AND SYSTEM INFORMATION

**ANY DEVIATION FROM PLANNING APPROVED DOCUMENTS REQUIRES THE SUBMISSION OF A PLANNING REVISION NO EXCEPTIONS**



FEB 21 2024

**REVISIONS**

**PURVIS PRIMARY**

**#44 ST. MARY'S ROAD, WARWICK, BERMUDA**

TECHNICIAN: BMS  
REF: sDs 05449  
DATE: MAR 2023  
SCALE: AS NOTED

**1** **ROOF PLAN**  
11x17 1/10" SCALE  
24x36 1/5" SCALE

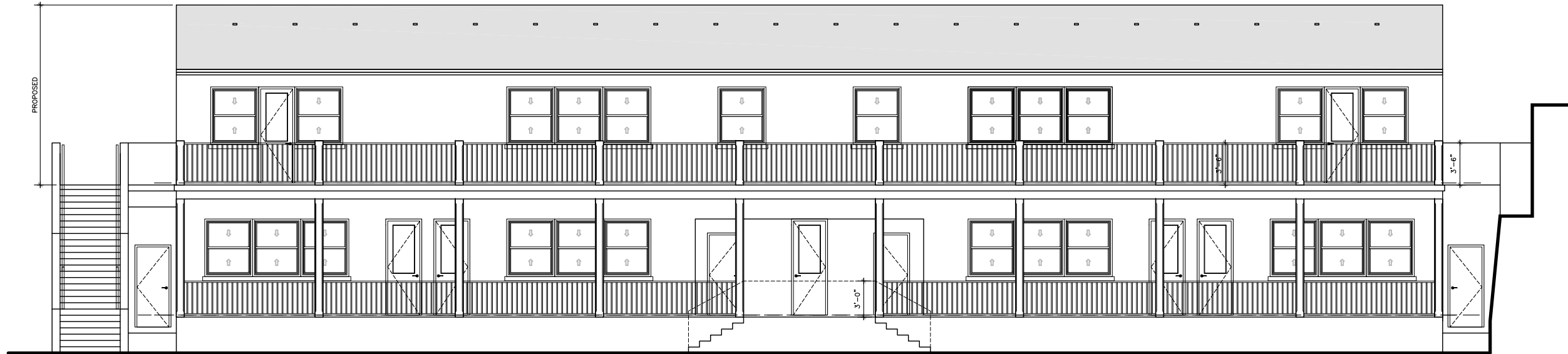
**A/202**



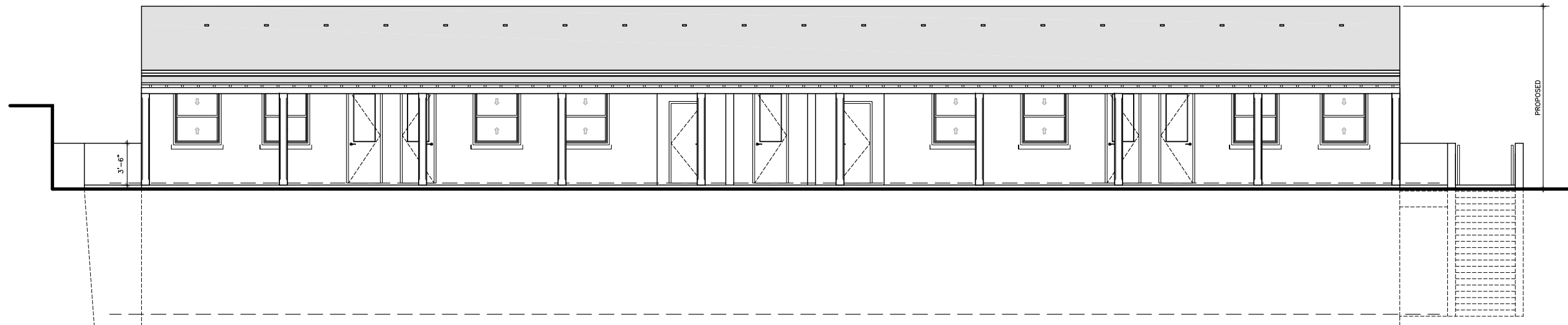
**GENERAL NOTES**

DO NOT SCALE DRAWINGS  
ANY MISSING OR UNCLEAR DIMENSIONS TO  
BE REPORTED TO CTX FOR CLARIFICATION  
REFER TO STRUCTURAL ENGINEER NOTES  
FOR ALL DRAWINGS  
REFER TO MECHANICAL ENGINEERING  
PLANS FOR PLUMBING AND AIR  
CONDITIONING SYSTEMS INFORMATION  
REFER TO ELECTRICAL ENGINEERING  
DRAWINGS FOR ELECTRICAL LAYOUT AND  
SYSTEM INFORMATION

ANY DEVIATION FROM  
PLANNING APPROVED  
DOCUMENTS REQUIRES  
THE SUBMISSION OF A  
PLANNING REVISION  
NO EXCEPTIONS



**1** EAST ELEVATION  
11x17 1/10" SCALE  
24x36 1/5" SCALE



**2** WEST ELEVATION  
11x17 1/10" SCALE  
24x36 1/5" SCALE

FEB 21 2024

**REVISIONS**

PURVIS PRIMARY

#44 ST. MARY'S ROAD,  
WARWICK  
BERMUDA

TECHNICIAN:  
BMS  
REF:  
SDs 05449  
DATE:  
MAR 2023  
SCALE:  
AS NOTED

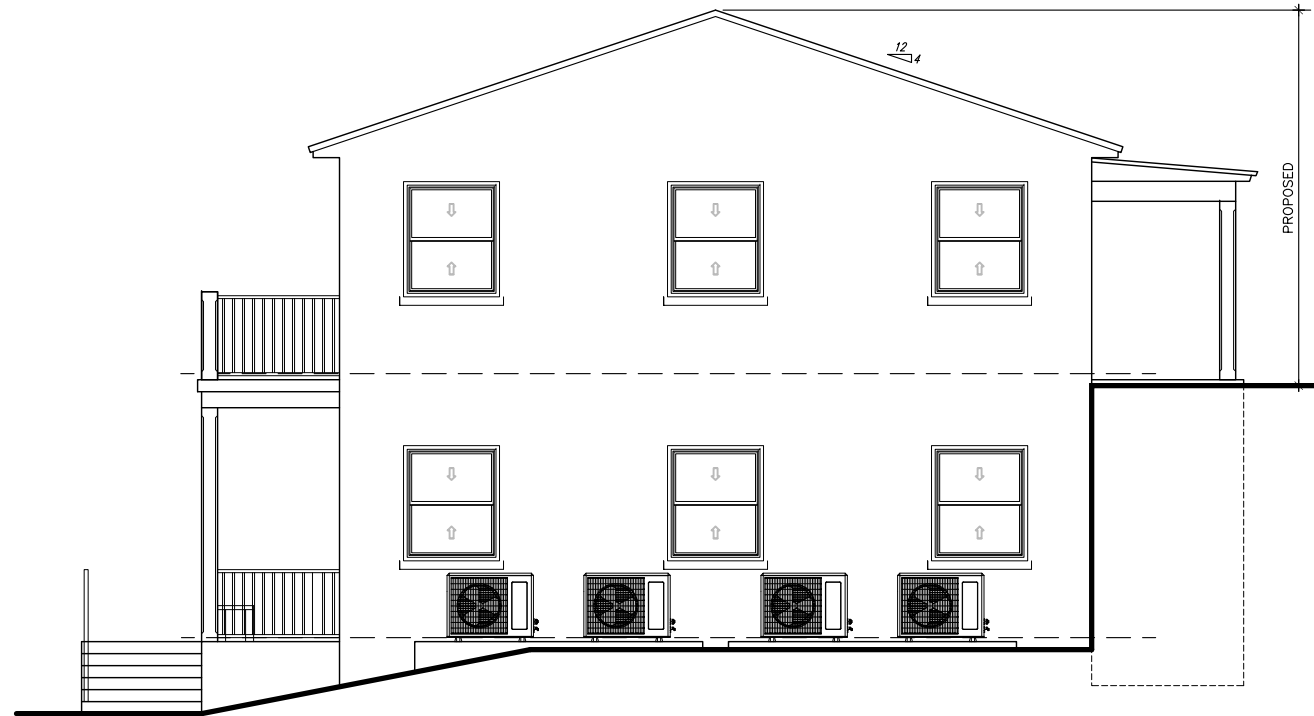
**A/300**



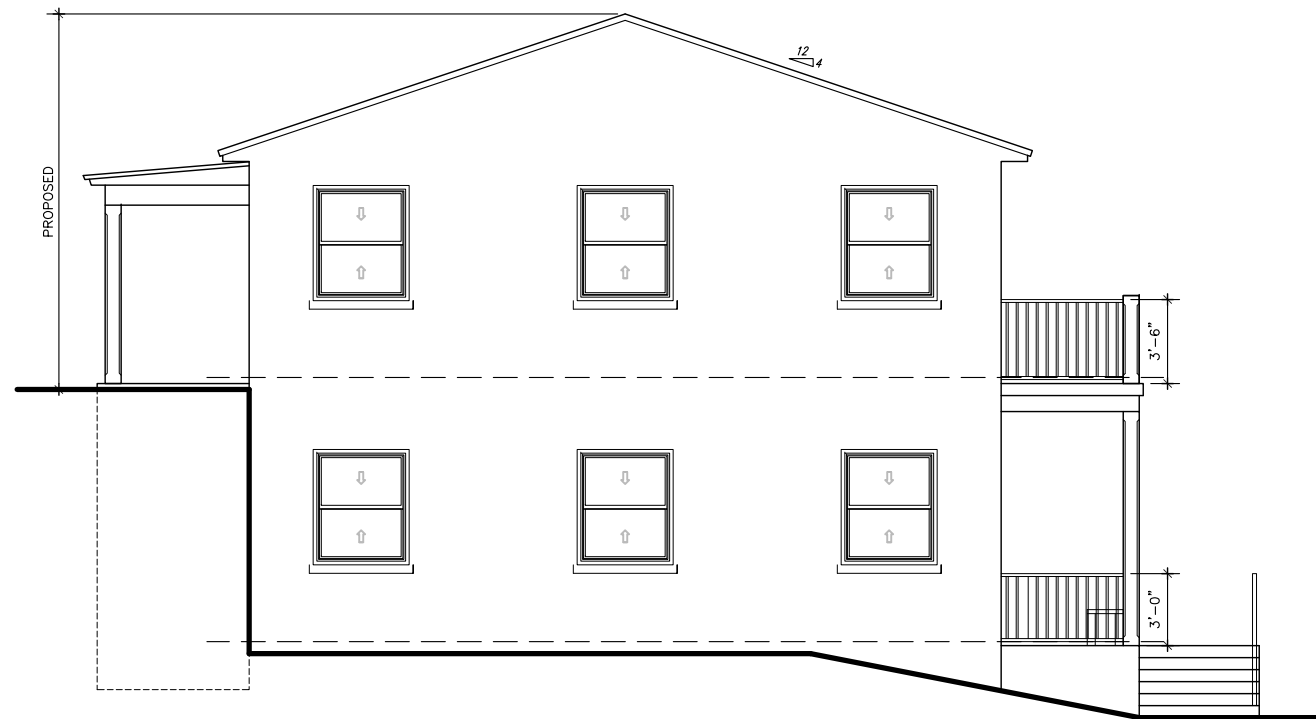
**GENERAL NOTES**

DO NOT SCALE DRAWINGS  
ANY MISSING OR UNCLEAR DIMENSIONS TO BE REPORTED TO CTX FOR CLARIFICATION  
REFER TO STRUCTURAL ENGINEER NOTES FOR ALL DRAWINGS  
REFER TO MECHANICAL ENGINEERING PLANS FOR PLUMBING AND AIR CONDITIONING SYSTEMS INFORMATION  
REFER TO ELECTRICAL ENGINEERING DRAWINGS FOR ELECTRICAL LAYOUT AND SYSTEM INFORMATION

ANY DEVIATION FROM PLANNING APPROVED DOCUMENTS REQUIRES THE SUBMISSION OF A PLANNING REVISION  
NO EXCEPTIONS



**1** NORTH ELEVATION  
11x17 1/8" SCALE  
24x36 1/4" SCALE



**2** SOUTH ELEVATION  
11x17 1/8" SCALE  
24x36 1/4" SCALE

FEB 21 2024

**REVISIONS**

PURVIS PRIMARY

#44 ST. MARY'S ROAD,  
WARWICK  
BERMUDA

TECHNICIAN:  
BMS  
REF:  
sDs 05449  
DATE:  
MAR 2023  
SCALE:  
AS NOTED

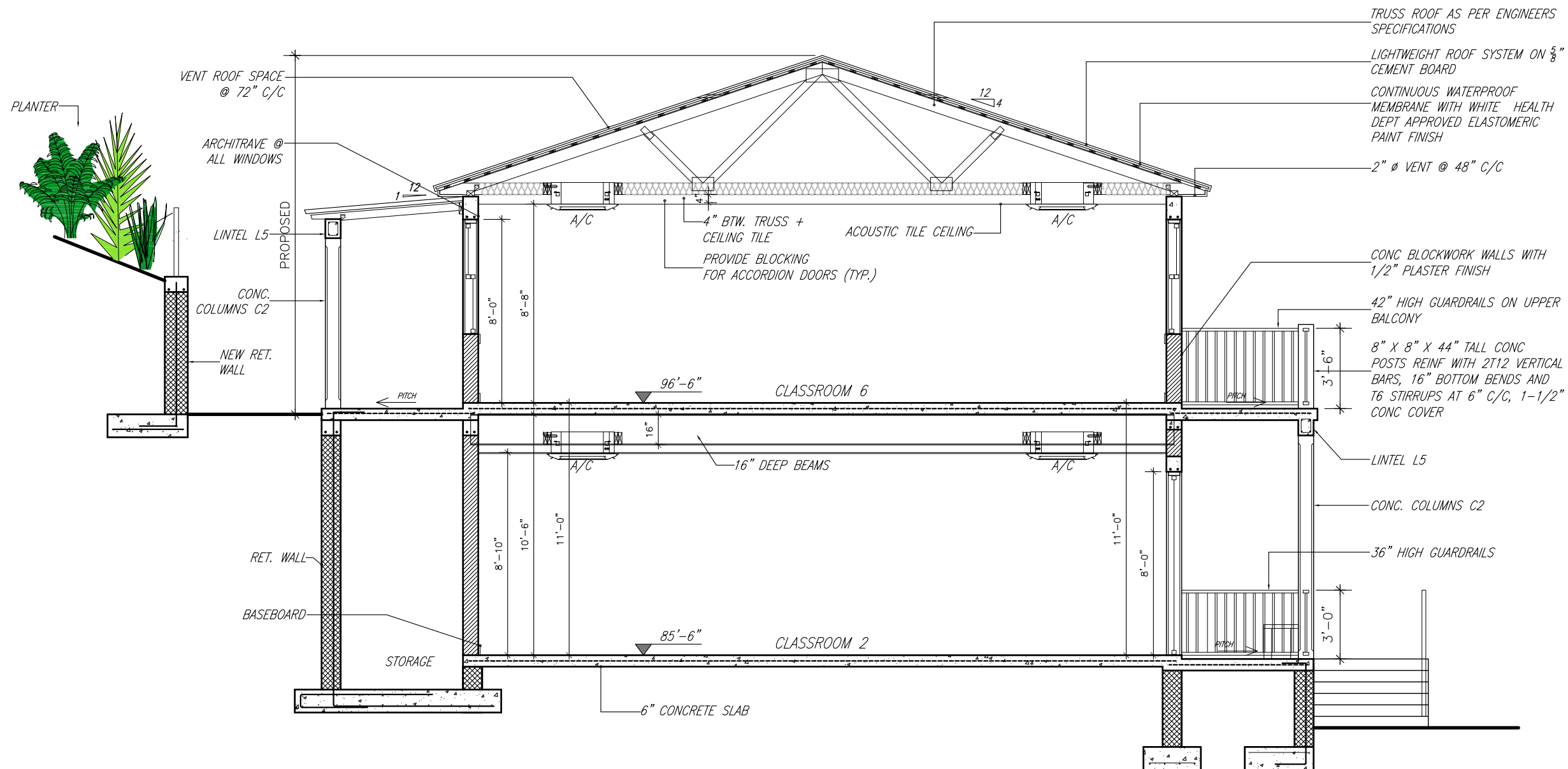
**A/301**



**GENERAL NOTES**

DO NOT SCALE DRAWINGS  
 ANY MISSING OR UNCLEAR DIMENSIONS TO BE REPORTED TO CTX FOR CLARIFICATION  
 REFER TO STRUCTURAL ENGINEER NOTES FOR ALL DRAWINGS  
 REFER TO MECHANICAL ENGINEERING PLANS FOR PLUMBING AND AIR CONDITIONING SYSTEMS INFORMATION  
 REFER TO ELECTRICAL ENGINEERING DRAWINGS FOR ELECTRICAL LAYOUT AND SYSTEM INFORMATION

**ANY DEVIATION FROM PLANNING APPROVED DOCUMENTS REQUIRES THE SUBMISSION OF A PLANNING REVISION NO EXCEPTIONS**

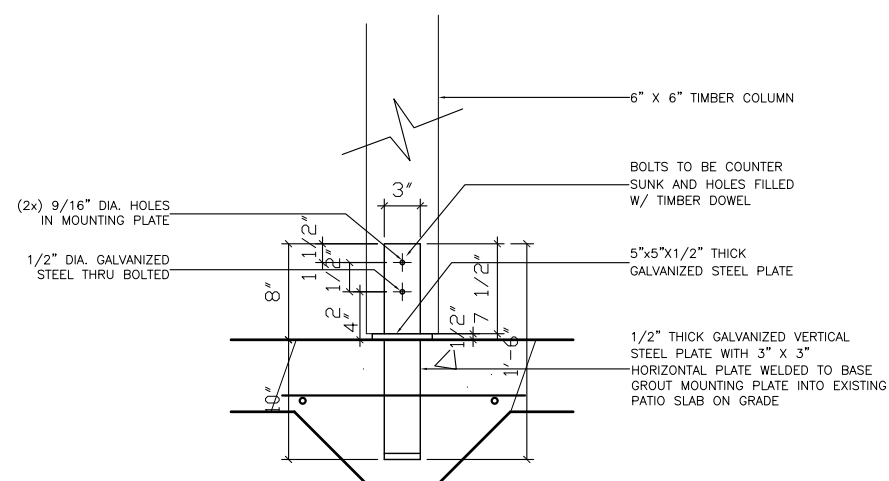


TRUSS ROOF AS PER ENGINEERS SPECIFICATIONS  
 LIGHTWEIGHT ROOF SYSTEM ON 5/8" CEMENT BOARD  
 CONTINUOUS WATERPROOF MEMBRANE WITH WHITE HEALTH DEPT APPROVED ELASTOMERIC PAINT FINISH  
 2" Ø VENT @ 48" C/C

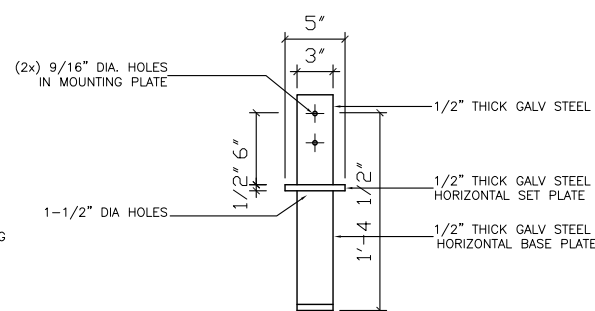
CONC BLOCKWORK WALLS WITH 1/2" PLASTER FINISH  
 42" HIGH GUARDRAILS ON UPPER BALCONY  
 8" X 8" X 44" TALL CONC POSTS REINF WITH 2T12 VERTICAL BARS, 16" BOTTOM BENDS AND T6 STIRRUPS AT 6" C/C, 1-1/2" CONC COVER

16" DEEP BEAMS  
 36" HIGH GUARDRAILS

**1 BUILDING SECTION 1**  
 11x17 3/16" SCALE  
 24x36 3/8" SCALE



PERGOLA POST BASE FIXING DETAIL



MOUNTING PLATE DETAIL

**2 COLUMN CONNECTION DETAILS**  
 11x17 3/4" SCALE  
 24x36 1-1/2" SCALE

FEB 21 2024

**REVISIONS**

**PURVIS PRIMARY**

**#44 ST. MARY'S ROAD, WARWICK, BERMUDA**

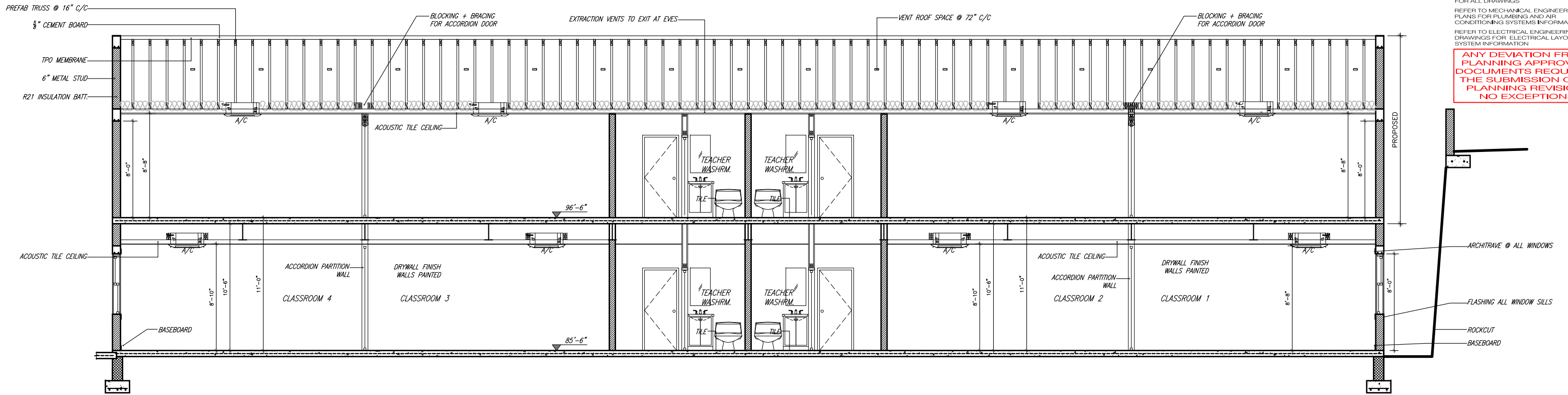
TECHNICIAN: BMS  
 REF: sDs 05449  
 DATE: MAR 2023  
 SCALE: AS NOTED

**A/400**

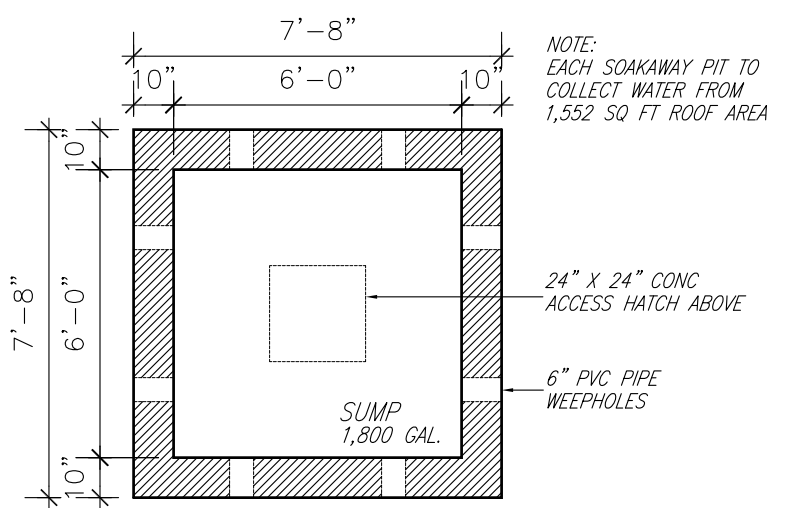
**GENERAL NOTES**

DO NOT SCALE DRAWINGS  
 ANY MISSING OR UNCLEAR DIMENSIONS TO BE REPORTED TO CTX FOR CLARIFICATION  
 REFER TO STRUCTURAL ENGINEER NOTES FOR ALL DRAWINGS  
 REFER TO MECHANICAL ENGINEERING PLANS FOR PLUMBING AND AIR CONDITIONING SYSTEMS INFORMATION  
 REFER TO ELECTRICAL ENGINEERING DRAWINGS FOR ELECTRICAL LAYOUT AND SYSTEM INFORMATION

**ANY DEVIATION FROM PLANNING APPROVED DOCUMENTS REQUIRES THE SUBMISSION OF A PLANNING REVISION NO EXCEPTIONS**

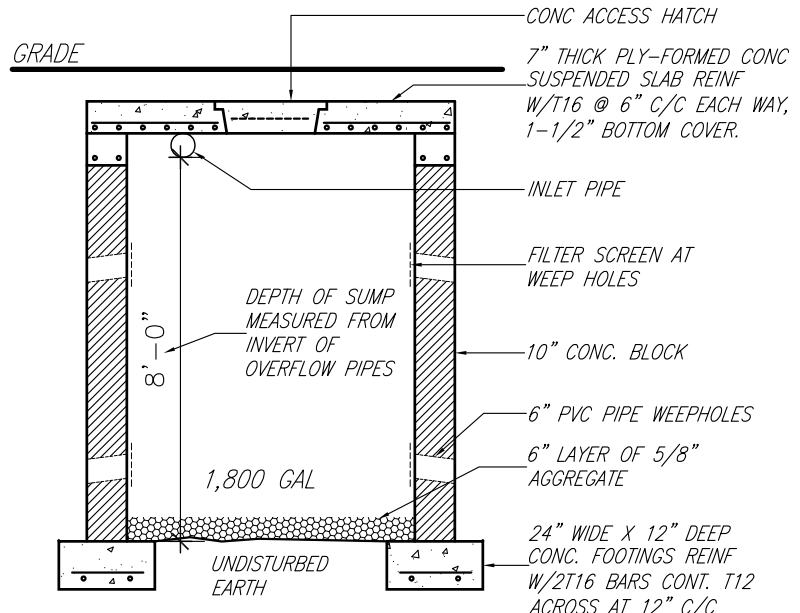


**2** BUILDING SECTION 2  
 11x17 1/8" SCALE  
 24x36 1/4" SCALE



SOAKAWAY PIT PLAN DETAIL

NOTE:  
 EACH SOAKAWAY PIT TO COLLECT WATER FROM 1,552 SQ FT ROOF AREA



SOAKAWAY PIT SECTION DETAIL

**3** SOAKAWAY PIT DETAILS  
 11x17 1/4" SCALE  
 24x36 1/2" SCALE

FEB 21 2024  
**REVISIONS**

**PURVIS PRIMARY**  
 #44 ST. MARY'S ROAD,  
 WARWICK  
 BERUDA

TECHNICIAN:  
 BMS  
 REF:  
 SDs 05449  
 DATE:  
 MAR 2023  
 SCALE:  
 AS NOTED

**A/401**