



GOVERNMENT OF BERMUDA  
Ministry of Health

# SURVEILLANCE SUMMARY REPORT 2025:

EPIDEMIOLOGICAL WEEKS 45-48: 2 NOVEMBER 2025 – 29 NOVEMBER 2025

*The Surveillance Summary Report contains information on syndromes and communicable diseases reported into the Epidemiology and Surveillance Unit by Epidemiological Week (or as otherwise indicated). The Report currently contains 3 sections:*

1. [Syndromic Surveillance](#)
2. [Conditions of Interest](#) – Influenza, COVID-19, and SARI (Severe Acute Respiratory Infection)
3. [Routine Communicable Disease Surveillance](#)

REPORT BASED ON DATA RECEIVED IN THE EPIDEMIOLOGY AND SURVEILLANCE UNIT BY 9 DECEMBER 2025

Epidemiology and Surveillance Unit

Phone: (441) 278-4900

E-mail: [epidemiology@gov.bm](mailto:epidemiology@gov.bm)

Website : [www.gov.bm/health-information](http://www.gov.bm/health-information)

## Syndromic Surveillance

---

Syndromic surveillance is the analysis of health-related data to detect or anticipate disease outbreaks. Action on an increase or alert in the reported syndromes under surveillance could potentially stop or slow the spread of the outbreak. The syndromes under surveillance are as follows:

**Acute Flaccid Paralysis (AFP):** Acute (sudden) onset of flaccid paralysis in the absence of trauma. *Any patient in whom a healthcare worker suspects acute flaccid paralysis is considered to be a suspected case of poliomyelitis.*

**Fever and Haemorrhagic symptoms:** Acute (sudden) onset of fever (> 38.0°C or 100.4°F) in a previously healthy person, presenting with at least one haemorrhagic (bleeding) manifestation with or without jaundice (e.g. purpura, epistaxis, haemoptysis, melena).

**Fever and Neurological symptoms (except AFP):** Acute (sudden) onset of fever (> 38.0°C or 100.4°F) with or without headache and vomiting in a previously healthy person presenting with at least one of the following signs: meningeal irritation, convulsions, altered consciousness, altered sensory manifestations, paralysis except AFP.

**Fever and Rash:** Acute (sudden) febrile illness (>38.0°C or 100.4°F) in a previously healthy person, presenting generalized rash. *Any patient in whom a healthcare worker suspects measles or rubella infection is considered to be a suspected measles/rubella case. These patients generally have fever and generalized rash illnesses.*

**Fever and Respiratory Symptoms (Acute Respiratory Infection):** Acute (sudden) febrile illness (> 38.0°C or 100.4°F) in a previously healthy person, presenting with cough or sore throat with or without respiratory distress.

**Gastroenteritis:** Acute (sudden) onset of diarrhoea, with or without fever (> 38C or 100.4F) and presenting with 3 or more loose or watery stools in the past 24 hours, with or without dehydration, vomiting and/or visible blood.

**Undifferentiated Fever:** An acute (sudden) febrile illness (> 38.0°C or 100.4°F) in a previously healthy person of less than 7 days duration with two or more of the following manifestations: headache, retro-orbital pain, myalgia, arthralgia, nausea, vomiting, jaundice – AND without any particular symptoms fitting another syndrome definition.

## Reported Syndromes

---

The data presented in this section reflects reports submitted to the Epidemiology and Surveillance Unit through Bermuda's sentinel surveillance system.

Syndromes reported in EWs 45-48 included Fever and Rash (chickenpox, hand foot and mouth disease), Fever and Respiratory (adenovirus, chlamydia pneumoniae, common cold, coronavirus "seasonal", COVID-19, influenza, mycoplasma pneumoniae, parainfluenza, RSV, strep throat, whooping cough) Gastroenteritis (c. difficile, campylobacter, cryptosporidium, e. coli, norovirus, salmonella, scombroid).

Alert levels are used to identify potential public health risks. A risk assessment will determine the need for any public health action.

During EWs 45-48, there were alerts for Fever and Rash, Fever and Respiratory Symptoms and Gastroenteritis.

### Epidemiological Week 45

Syndrome	# of Reported Cases	5-Yr Average*	Medium Alert Threshold**	High Alert Threshold***	Alert Level
Acute Flaccid Paralysis	0	0	0	0	LOW
Fever and Haemorrhagic Symptoms	0	0	0	0	LOW
Fever and Neurological Symptoms	0	0	0	0	LOW
Fever and Rash	1	0	1	3	LOW
Fever and Respiratory Symptoms (under 5 years)	14	4	6	12	HIGH
Fever and Respiratory Symptoms (5 years and older)	27	18	30	55	LOW
Gastroenteritis (under 5 years)	0	1	2	4	LOW
Gastroenteritis (5 years and older)	2	3	5	8	LOW
Undifferentiated Fever (under 5 years)	0	0	0	0	LOW
Undifferentiated Fever (5 years and older)	0	0	0	1	LOW
% of sentinel sites reporting					92.86%

### Epidemiological Week 46

Syndrome	# of Reported Cases	5-Yr Average*	Medium Alert Threshold**	High Alert Threshold***	Alert Level
Acute Flaccid Paralysis	0	0	0	0	LOW
Fever and Haemorrhagic Symptoms	0	0	0	0	LOW
Fever and Neurological Symptoms	0	0	0	1	LOW
Fever and Rash	3	0	2	4	MEDIUM
Fever and Respiratory Symptoms (under 5 years)	3	4	8	15	LOW
Fever and Respiratory Symptoms (5 years and older)	16	20	34	62	LOW
Gastroenteritis (under 5 years)	2	1	1	3	MEDIUM
Gastroenteritis (5 years and older)	7	3	4	8	MEDIUM
Undifferentiated Fever (under 5 years)	0	0	0	0	LOW
Undifferentiated Fever (5 years and older)	0	0	0	1	LOW
% of sentinel sites reporting					92.86%

### Epidemiological Week 47

Syndrome	# of Reported Cases	5-Yr Average*	Medium Alert Threshold**	High Alert Threshold***	Alert Level
Acute Flaccid Paralysis	0	0	0	0	LOW
Fever and Haemorrhagic Symptoms	0	0	0	0	LOW
Fever and Neurological Symptoms	0	0	0	1	LOW
Fever and Rash	0	1	2	4	LOW
Fever and Respiratory Symptoms (under 5 years)	7	5	9	18	LOW
Fever and Respiratory Symptoms (5 years and older)	39	24	40	73	LOW
Gastroenteritis (under 5 years)	1	1	1	3	LOW
Gastroenteritis (5 years and older)	4	3	5	8	LOW
Undifferentiated Fever (under 5 years)	0	0	0	0	LOW
Undifferentiated Fever (5 years and older)	0	0	0	1	LOW
% of sentinel sites reporting					92.86%

### Epidemiological Week 48

Syndrome	# of Reported Cases	5-Yr Average*	Medium Alert Threshold**	High Alert Threshold***	Alert Level
Acute Flaccid Paralysis	0	0	0	0	LOW
Fever and Haemorrhagic Symptoms	0	0	0	0	LOW
Fever and Neurological Symptoms	0	0	0	1	LOW
Fever and Rash	0	1	2	4	LOW
Fever and Respiratory Symptoms (under 5 years)	15	5	10	18	MEDIUM
Fever and Respiratory Symptoms (5 years and older)	29	29	48	87	LOW
Gastroenteritis (under 5 years)	3	1	1	3	HIGH
Gastroenteritis (5 years and older)	5	3	5	9	MEDIUM
Undifferentiated Fever (under 5 years)	0	0	0	0	LOW
Undifferentiated Fever (5 years and older)	0	0	0	0	LOW
% of sentinel sites reporting					92.86%

### 4-Week Summary: Epidemiological Weeks 45-48

Syndrome	# of Reported Cases	5-Yr Average	Medium Alert Threshold**	High Alert Threshold***	Alert Level
Acute Flaccid Paralysis	0	0	0	0	LOW
Fever and Haemorrhagic Symptoms	0	0	0	0	LOW
Fever and Neurological Symptoms	0	0	1	2	LOW
Fever and Rash	4	2	7	16	LOW
Fever and Respiratory Symptoms (under 5 years)	39	18	33	64	MEDIUM
Fever and Respiratory Symptoms (5 years and older)	111	91	153	277	LOW
Gastroenteritis (under 5 years)	6	2	6	12	MEDIUM
Gastroenteritis (5 years and older)	18	11	19	33	LOW
Undifferentiated Fever (under 5 years)	0	0	0	0	LOW
Undifferentiated Fever (5 years and older)	0	0	1	2	LOW

### Cumulative Summary: Epidemiological Weeks 1-48

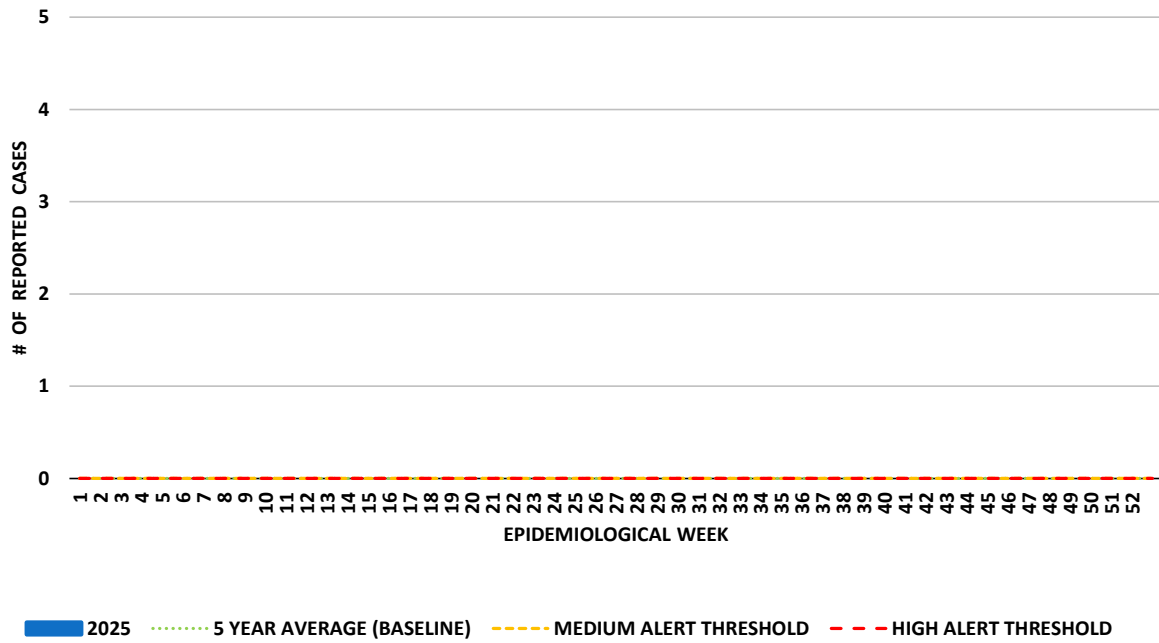
Syndrome	# of Reported Cases	5-Yr Average	Medium Alert Threshold**	High Alert Threshold***	Alert Level
Acute Flaccid Paralysis	0	0	0	0	LOW
Fever and Haemorrhagic Symptoms	0	0	1	3	LOW
Fever and Neurological Symptoms	7	1	5	13	MEDIUM
Fever and Rash	77	23	65	147	MEDIUM
Fever and Respiratory Symptoms (under 5 years)	216	200	400	799	LOW
Fever and Respiratory Symptoms (5 years and older)	1359	1530	2783	5291	LOW
Gastroenteritis (under 5 years)	37	36	85	183	LOW
Gastroenteritis (5 years and older)	217	170	295	543	LOW
Undifferentiated Fever (under 5 years)	0	1	7	19	LOW
Undifferentiated Fever (5 years and older)	1	1	7	17	LOW

\*5-Yr Average calculated by summing the incidence counts for the current week, the 2 weeks preceding the current week, and the 2 weeks following the current week, for a total of 5 preceding years.

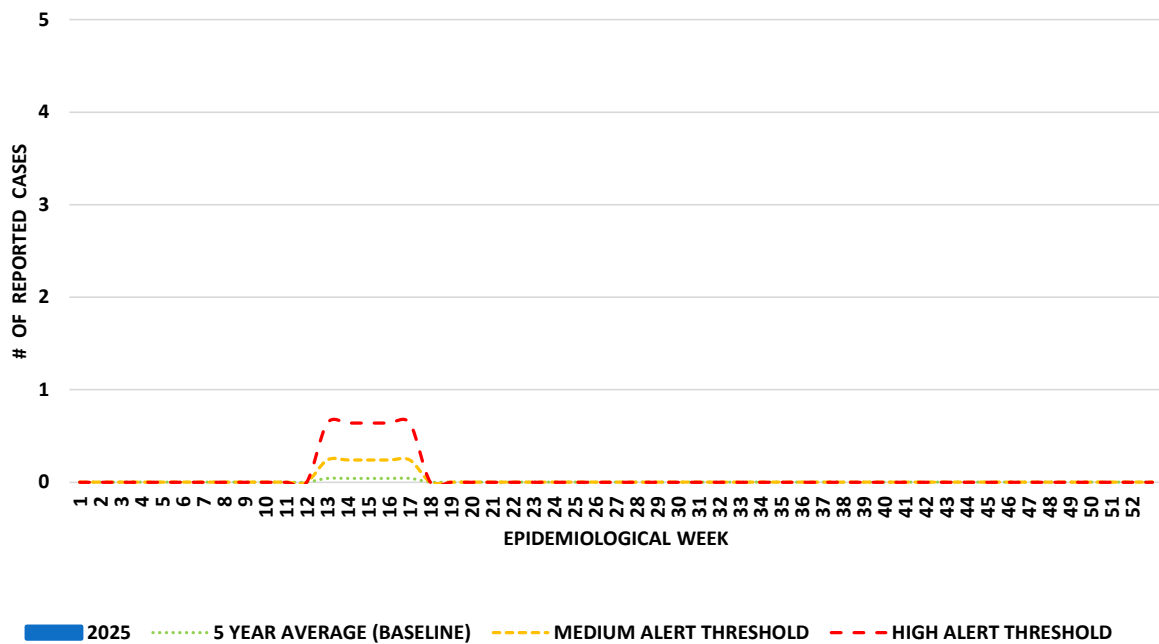
\*\* Medium Alert Threshold is set at 1 standard deviation above 5-yr average

\*\*\* High Alert Threshold is set at 3 standard deviations above 5-year average

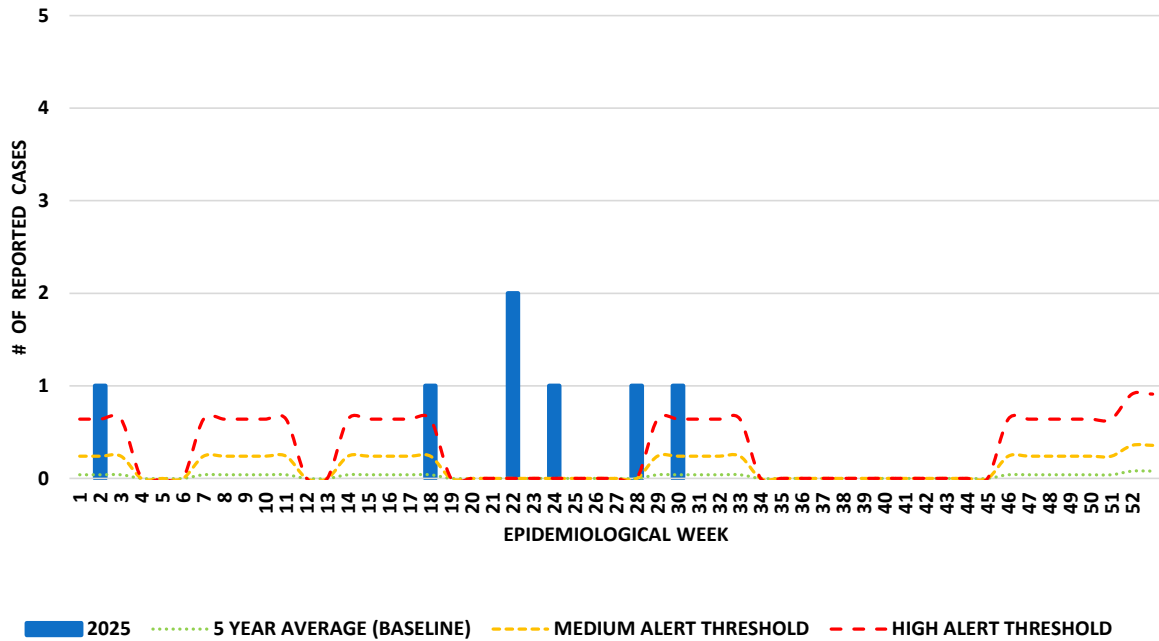
### ACUTE FLACCID PARALYSIS



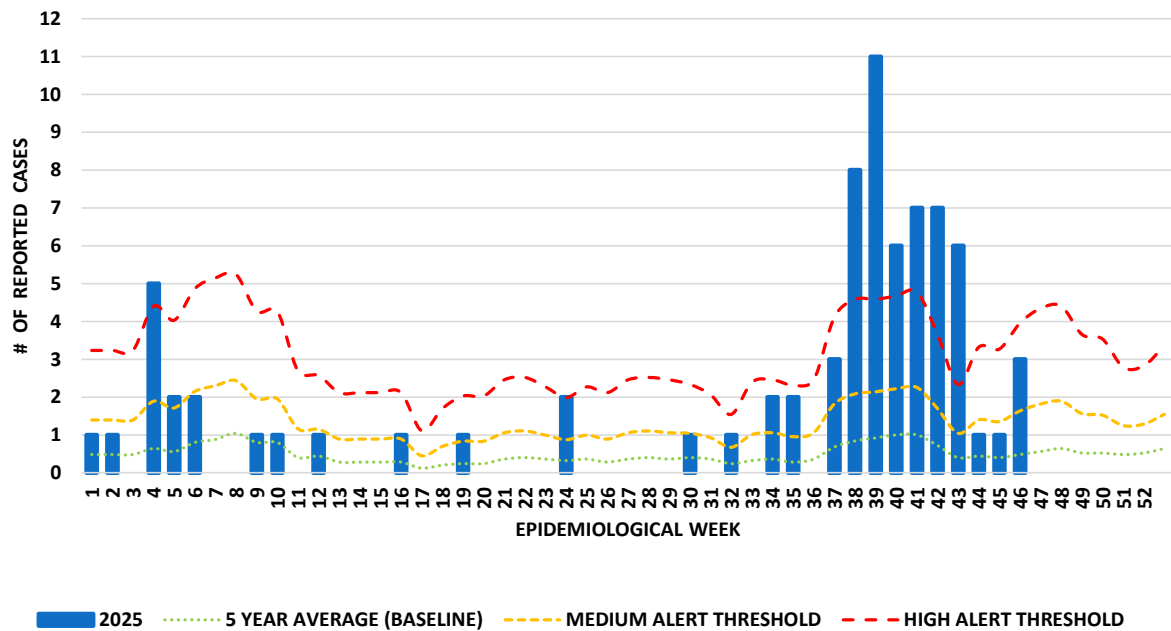
### FEVER AND HAEMORRHAGIC SYMPTOMS



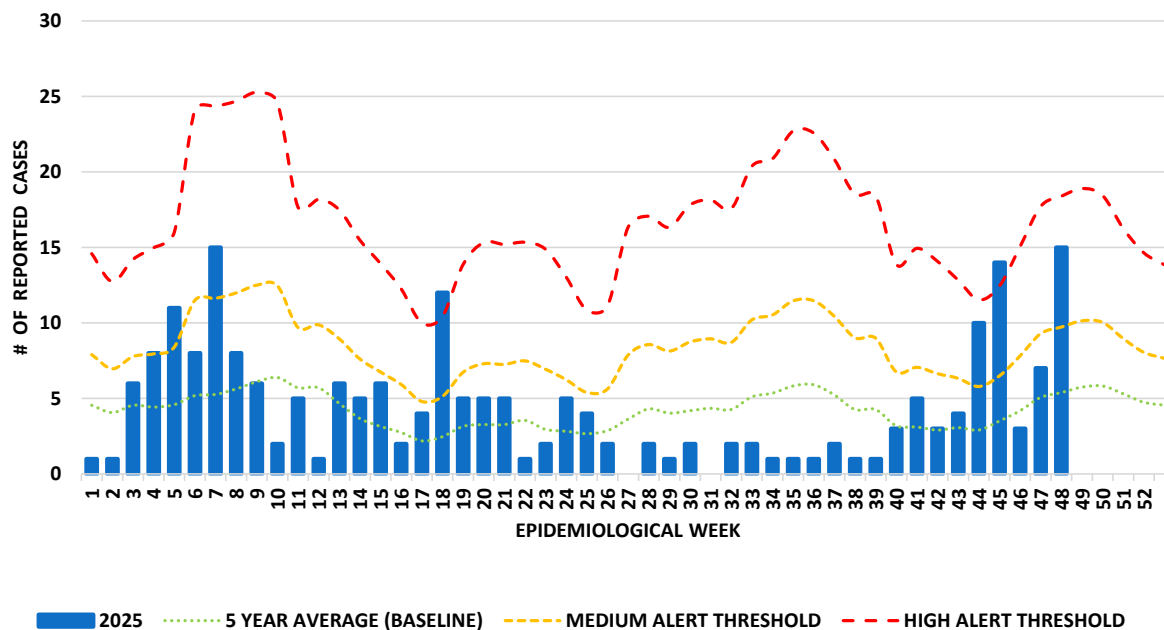
### FEVER AND NEUROLOGICAL SYMPTOMS



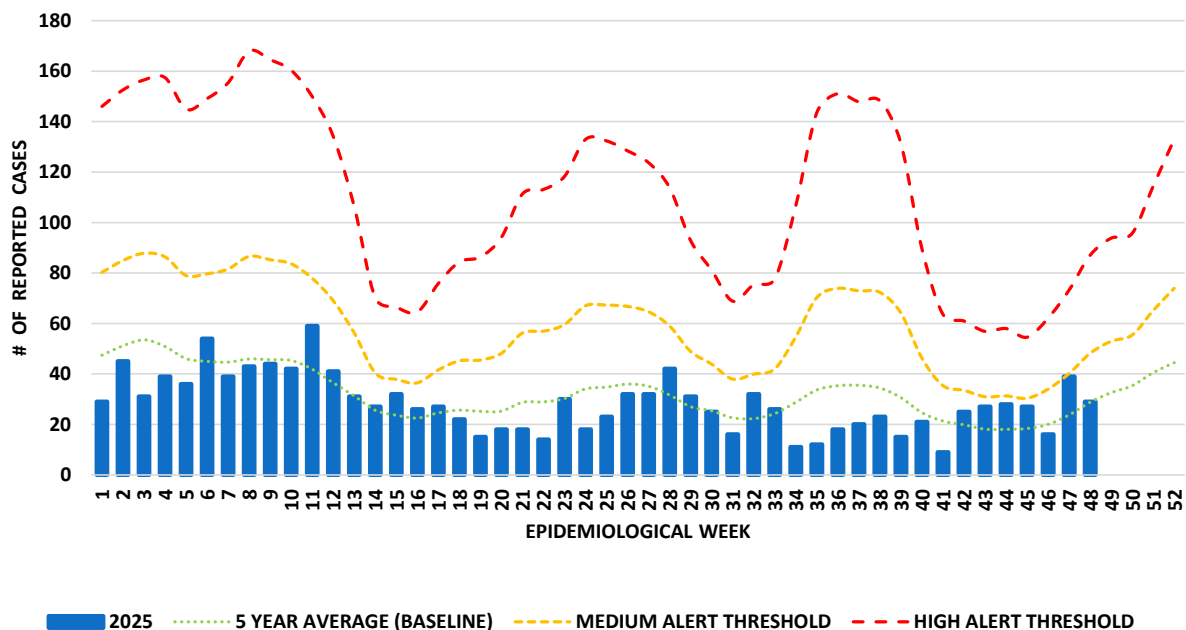
### FEVER AND RASH



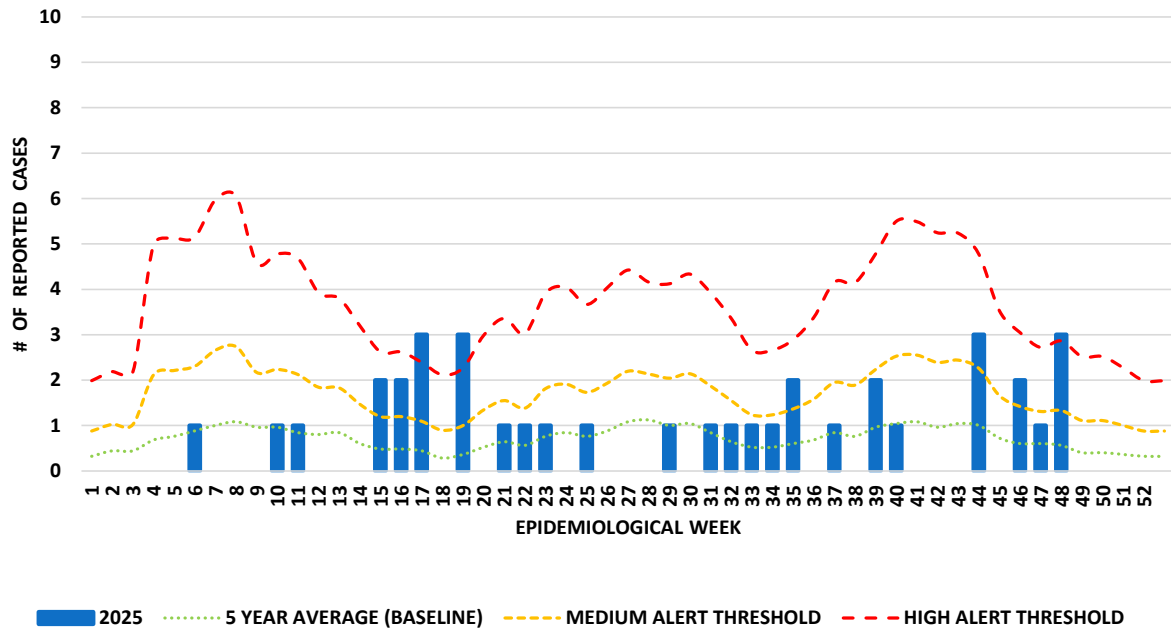
### FEVER AND RESPIRATORY SYMPTOMS IN PERSONS AGED UNDER 5 YEARS



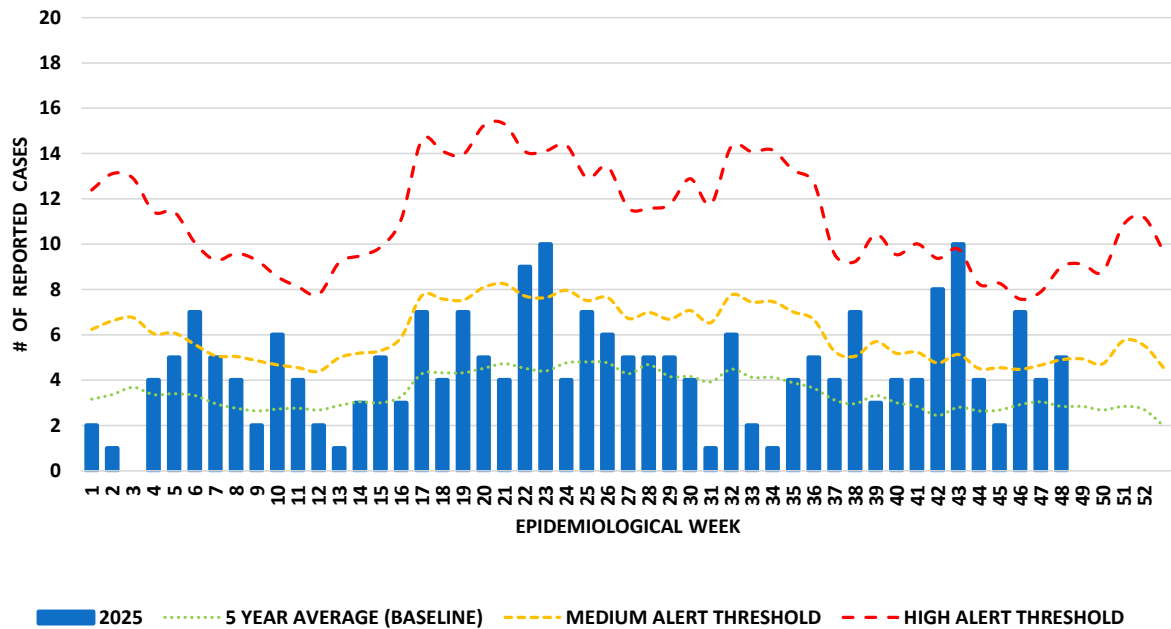
### FEVER AND RESPIRATORY SYMPTOMS IN PERSONS AGED 5 YEARS AND OLDER



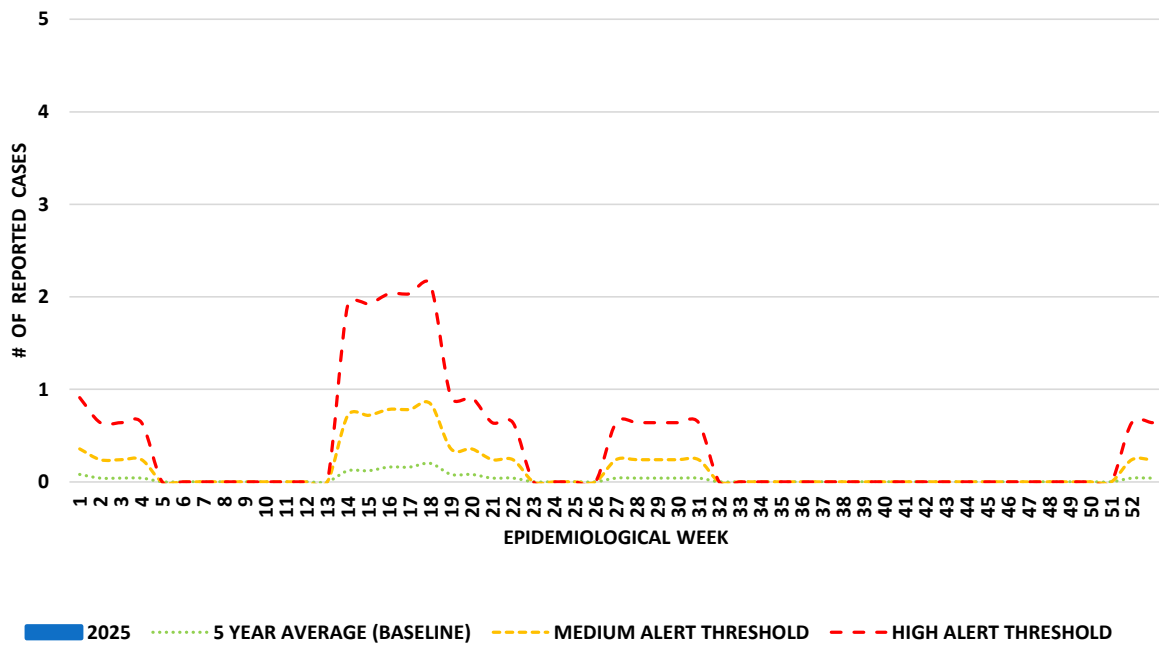
### GASTROENTERITIS IN PERSONS AGED UNDER 5 YEARS



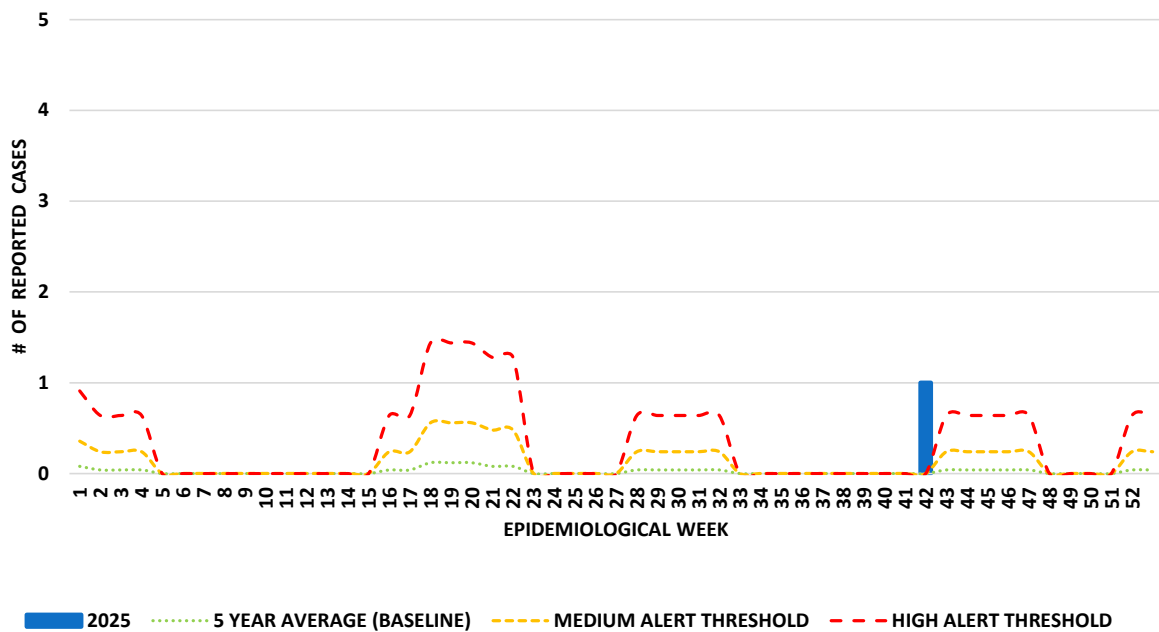
### GASTROENTERITIS IN PERSONS AGED 5 YEARS AND OLDER



### UNDIFFERENTIATED FEVER IN PERSONS AGED UNDER 5 YEARS



### UNDIFFERENTIATED FEVER IN PERSONS AGED 5 YEARS AND OLDER





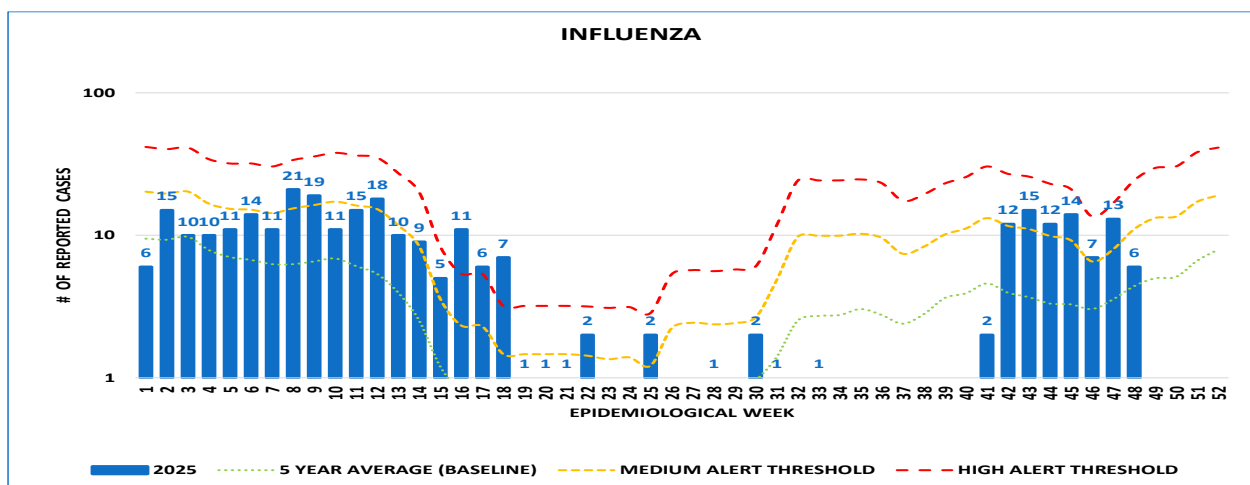
# Conditions of Interest: Influenza, COVID-19, and Severe Acute Respiratory Infection (SARI)

Note: Each condition in this section is displayed using a logarithmic (log) scale. This improves visualization by allowing clearer interpretation of week-to-week changes, especially when case counts, including historical data, vary across a wide range. Surveillance case definitions accompany each graph.

## Influenza:

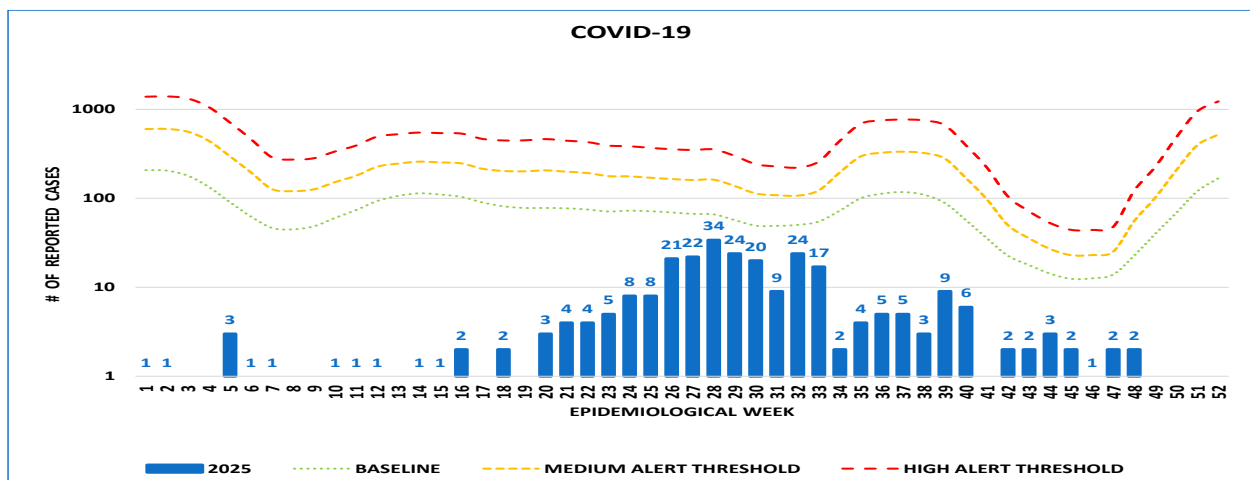
*Clinical (or suspect):* A person with fever, headache, myalgia, and cough

*Laboratory confirmed:* A clinical or suspect case with positive laboratory findings



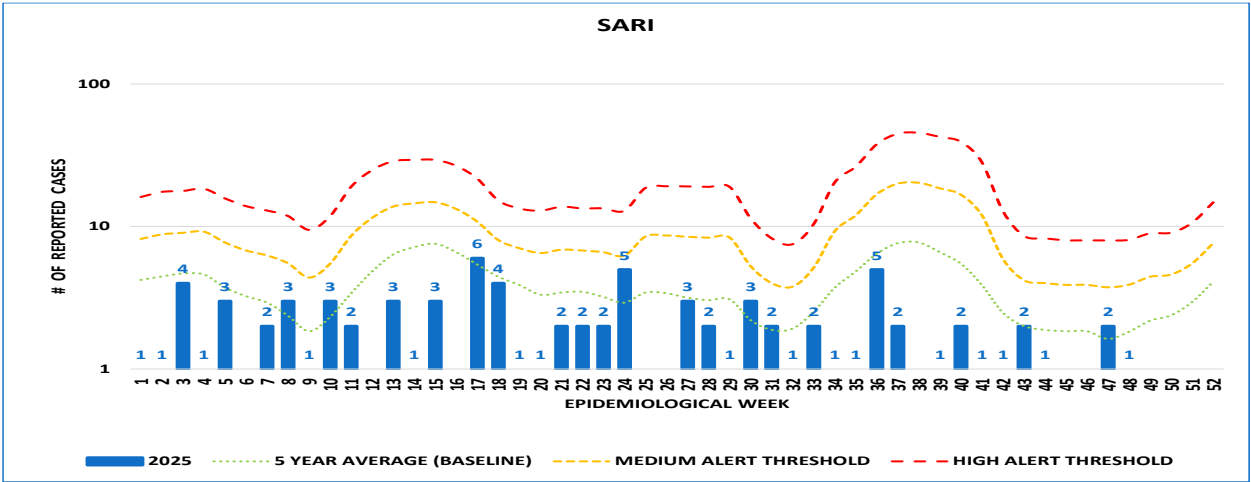
## COVID-19:

A person with laboratory or antigen test confirmation of COVID-19 infection, irrespective of clinical signs and symptoms



Severe Acute Respiratory Infection (SARI):

An acute respiratory infection with history of fever or measured fever of  $\geq 38^{\circ}\text{C}$  and cough, with onset within the last 10 days, and requiring hospitalization.



Summary

Influenza activity remained relatively high throughout the period. A peak of 14 cases was recorded in EW 45, followed by a decrease to 7 cases in EW 46. Cases then rose again to 13 in EW 47 before decreasing to 6 in EW 48. While the week-to-week pattern fluctuated, the overall trend suggests continued seasonal transmission of influenza.

COVID-19 activity remained stable and low, with 1–2 cases reported weekly. Specifically, there were 2 cases in EWs 45, 47, and 48, and 1 case in EW 46. This reflects a period of minimal community transmission.

SARI reports remained low, with 0 cases in EWs 45 and 46, 2 cases in EW 47, and 1 in EW 48, indicating no significant increase in severe respiratory illness during the period.

## Routine Communicable Disease Surveillance (EWs 45-48, 2025)

An observed increase in confirmed diseases may not necessarily indicate a true increase in disease incidence. Such increases may result from factors like enhanced diagnostic capacity, improved access to confirmatory testing, or heightened awareness of circulating diseases—both locally and globally.

In instances where the relative level is above normal (indicated in red), further epidemiological investigation may be conducted to determine if there are clusters of illness or outbreaks occurring. This is dependent on many factors, including the severity of the illness, the potential for spread, and the availability of control measures.

DISEASES/PATHOGENS	Cumulative Total (Lab Conf. cases)	
	Curr. Yr	Last Yr.
<b>Diseases Reportable under the International Health Regulations</b>		
Cholera	0	0
Human Influenza (new sub-type)	0	0
Pneumonic Plague	0	0
Poliomyelitis	0	0
Severe Acute Respiratory Syndrome (SARS)	0	0
Yellow Fever	0	0
<b>Air Borne Diseases</b>		
Adenoviruses	21	61
COVID-19	262	623
Human Metapneumovirus [hMPV]	52	22
Influenza	314	326
Respiratory Syncytial Virus [RSV]	137	58
Tuberculosis - Extrapulmonary	1	0
Tuberculosis - Pulmonary	3	1
<b>Vaccine Preventable Diseases under the Caribbean Expanded Programme on Immunization</b>		
Chicken Pox [Varicella] (clinically confirmed)	9	14
Diphtheria	0	0
Measles	0	2
Meningitis [due to <i>Haemophilus influenzae</i> ]	0	0
Meningitis [due to <i>Streptococcus pneumoniae</i> ]	1	0
Meningococcal infection [due to <i>Neisseria meningitidis</i> ]	0	0
Mumps	0	0
Pertussis [Whooping Cough]	4	2
Pneumonia [due to <i>Haemophilus influenzae</i> ]	0	0
Pneumonia [due to <i>Streptococcus pneumoniae</i> ]	0	1
Rotavirus	10	9
Rubella [Congenital German Measles]	0	0
Rubella [German Measles]	0	0
Tetanus [excluding Neonatal]	0	0
Tetanus Neonatorum	0	0
<b>Vector Borne Diseases</b>		
Chagas Disease	0	0
Chikungunya	0	0
Dengue Fever	0	2
Dengue Haemorrhagic Fever/Shock Syndrome	0	0
Leptospirosis	3	0
Malaria	1	0
Zika	0	0
<b>Food and Water Borne Pathogens</b>		
<i>Campylobacter</i>	32	24
Ciguatera Poisoning (clinically confirmed)	0	2
<i>Cryptosporidium</i>	3	6
<i>E. Coli</i> (pathogenic)	49	47
<i>Giardia</i>	4	3
Hepatitis A	1	1
Listeria	0	0
Norovirus	12	9
Salmonella	36	29
Shigella	3	2
Staphylococcus (pathogenic)	0	0
Toxoplasma	0	0
Typhoid and Paratyphoid	0	0
Vibrio (excluding Cholera)	0	1
<b>Other Diseases</b>		
Viral Encephalitis/Meningitis	1	1
Hepatitis B	3	5
Hepatitis C	8	5
Leprosy (Hansens Disease)	0	0
Meningitis/Encephalitis (not specified)	3	0
Rabies (in Humans)	0	0
<b>Specific Diseases under Country Surveillance</b>		
Chlamydia	229	264
Gonorrhoea	15	36
Herpes	20	42
Syphilis	5	5

## EPIDEMIOLOGICAL WEEKS 2025

WEEK	FROM	TO
1	29-Dec-24	4-Jan-25
2	5-Jan-25	11-Jan-2025
3	12-Jan-25	18-Jan-25
4	19-Jan-25	25-Jan-25
5	26-Jan-25	01-Feb-25
6	02-Feb-25	08-Feb-25
7	09-Feb-25	15-Feb-25
8	16-Feb-25	22-Feb-25
9	23-Feb-25	01-Mar-25
10	02-Mar-25	08-Mar-25
11	09-Mar-25	15-Mar-25
12	16-Mar-25	22-Mar-25
13	23-Mar-25	29-Mar-25
14	30-Mar-25	05-Apr-25
15	06-Apr-25	12-Apr-25
16	13-Apr-25	19-Apr-25
17	20-Apr-25	26-Apr-25
18	27-Apr-25	03-May-25
19	04-May-25	10-May-25
20	11-May-25	17-May-25
21	18-May-25	24-May-25
22	25-May-25	31-May-25
23	01-Jun-25	07-Jun-25
24	08-Jun-25	14-Jun-25
25	15-Jun-25	21-Jun-25
26	22-Jun-25	28-Jun-25

WEEK	FROM	TO
27	29-Jun-25	05-Jul-25
28	06-Jul-25	12-Jul-25
29	13-Jul-25	19-Jul-25
30	20-Jul-25	26-Jul-25
31	27-Jul-25	02-Aug-25
32	03-Aug-25	09-Aug-25
33	10-Aug-25	16-Aug-25
34	17-Aug-25	23-Aug-25
35	24-Aug-25	30-Aug-25
36	31-Aug-25	06-Sep-25
37	07-Sep-25	13-Sep-25
38	14-Sep-25	20-Sep-25
39	21-Sep-25	27-Sep-25
40	28-Sep-25	04-Oct-25
41	05-Oct-25	11-Oct-25
42	12-Oct-25	18-Oct-25
43	19-Oct-25	25-Oct-25
44	26-Oct-25	01-Nov-25
45	02-Nov-25	08-Nov-25
46	09-Nov-25	15-Nov-25
47	16-Nov-25	22-Nov-25
48	23-Nov-25	29-Nov-25
49	30-Nov-25	06-Dec-25
50	07-Dec-25	13-Dec-25
51	14-Dec-25	20-Dec-25
52	21-Dec-25	27-Dec-25