

IN ASSOCIATION WITH:



Woodbourne
ASSOCIATES LTD
CONSULTING ENGINEERS, SURVEYORS,
DESIGNERS & VALUERS
P.O. BOX HM 934, HAMILTON,
HM DX, BERMUDA
TEL. 441-295-0319 FAX.441-292-3784

AMMENDMENTS:

NO	REVISION	BY	DATE
A			JUL.09
B	VARIOUS	JOC	AUG.09



PROJECT NUMBER:

14815

PROJECT NAME:

**ASH PROCESSING BUILDING
TYNES BAY**

**31 PALMETTO ROAD
DEVONSHIRE**

SHEET TITLE:

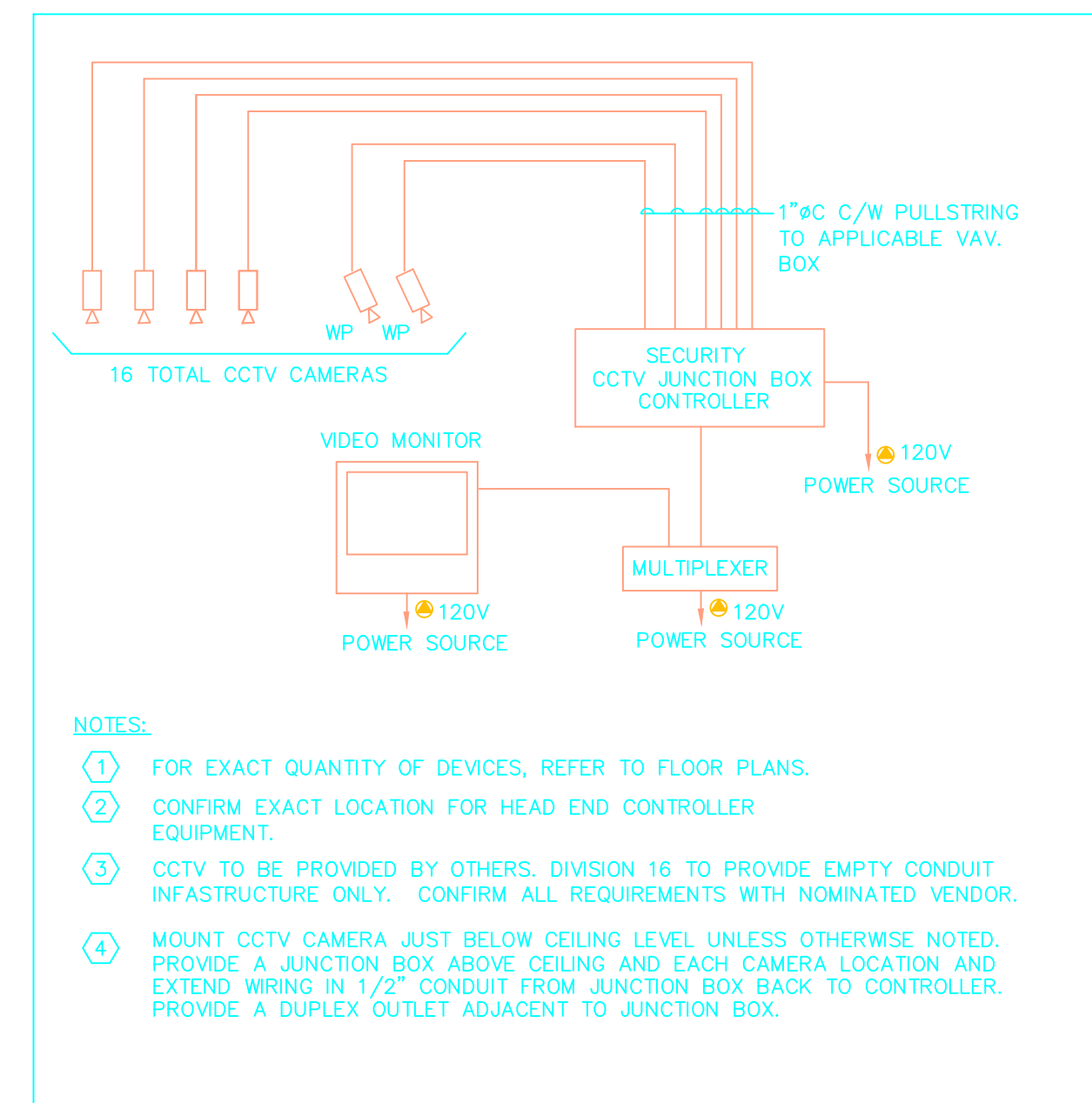
**ELECTRICAL DETAILS
LEGEND**

SHEET NUMBER:

E0.0

ELECTRICAL SYMBOL LEGEND	
	SURFACE, RECESSED, OR WALL MOUNTED LIGHTING FIXTURE CONNECTED TO NORMAL BRANCH CIRCUIT. SEE LIGHTING FIXTURE SCHEDULE FOR EXACT REQUIREMENTS.
	SURFACE, RECESSED, OR WALL MOUNTED LIGHTING FIXTURE COMPLETE WITH BALLAST. LETTER INDICATES TYPE. SEE LIGHTING FIXTURE SCHEDULE FOR EXACT REQUIREMENTS.
	CEILING MOUNTED EXIT SIGN, SHADED AREA INDICATES FACE WITH DIRECTIONAL ARROWS AS SHOWN. SEE LIGHTING FIXTURE SCHEDULE FOR EXACT REQUIREMENTS. CONNECT UNSWITCHED TO INDICATED BRANCH CIRCUIT.
	WALL MOUNTED EXIT SIGN, SHADED AREA INDICATES FACE WITH DIRECTIONAL ARROWS AS SHOWN. SEE LIGHTING FIXTURE SCHEDULE FOR EXACT REQUIREMENTS. CONNECT UNSWITCHED TO INDICATED BRANCH CIRCUIT.
	FUSED SAFETY SWITCH, SIZE AND NUMBER OF POLES AS INDICATED BY SUBSCRIPTS. PROVIDE FUSES PER NAMEPLATE OF EQUIPMENT SERVED UNLESS OTHERWISE INDICATED.
	SINGLE-POLE TOGGLE SWITCH IN FLUSH (FINISHED SPACES) OR SURFACE (UNFINISHED SPACES) OUTLET BOX. MOUNT 46-INCHES ABOVE FINISHED FLOOR UNLESS OTHERWISE INDICATED OR REQUIRED BY SITE CONDITIONS.
	THREE-WAY TOGGLE SWITCH IN FLUSH (FINISHED SPACES) OR SURFACE (UNFINISHED SPACES) OUTLET BOX. MOUNT 46" ABOVE FINISHED FLOOR UNLESS OTHERWISE INDICATED OR REQUIRED BY SITE CONDITIONS.
	FOUR-WAY TOGGLE SWITCH IN FLUSH (FINISHED SPACES) OR SURFACE (UNFINISHED SPACES) OUTLET BOX. MOUNT 46" ABOVE FINISHED FLOOR UNLESS OTHERWISE INDICATED OR REQUIRED BY SITE CONDITIONS.
	PHOTOCELL, MOUNTING REQUIREMENTS AS INDICATED.
	125 VOLT, 3 WIRE DUPLEX RECEPTACLE IN FLUSH (FINISHED SPACES) OR SURFACE (UNFINISHED SPACES) OUTLET BOX. MOUNT 18-INCHES ABOVE FINISHED FLOOR UNLESS OTHERWISE INDICATED.
	125 VOLT, 3 WIRE GROUND FAULT TYPE DUPLEX RECEPTACLE. MOUNTING AS INDICATED.
	125 VOLT, 3 WIRE ISOLATED GROUND TYPE DUPLEX RECEPTACLE. MOUNTING AS INDICATED.
	125 VOLT, 3 WIRE GROUND FAULT WEATHER-PROOF RECEPTACLE.
	TELECOMMUNICATIONS OUTLET MOUNTED 46" ABOVE FINISHED FLOOR OR 6" ABOVE DESK/COUNTERTOP UNLESS OTHERWISE INDICATED. SUBSCRIPT 'XD' AND/OR 'XV', WHEN SHOWN, DENOTES NUMBER OF DATA AND/OR VOICE CABLES/JACKS RESPECTIVELY.
	TELEPHONE OUTLET 18" ABOVE FINISHED FLOOR UNLESS OTHERWISE INDICATED OR REQUIRED BY SITE CONDITIONS. MOUNT FLUSH IN FINISHED SPACES OR SURFACE IN UNFINISHED SPACES.
	TELEVISION SYSTEM OUTLET FLUSH MOUNTED 18" ABOVE FINISHED FLOOR UNLESS OTHERWISE INDICATED.
	CLOSED CIRCUIT TELEVISION
	PANELBOARD, FLUSH AND SURFACE MOUNTED RESPECTIVELY.
	PANELBOARD, FLUSH AND SURFACE MOUNTED RESPECTIVELY. SEE PANEL SCHEDULE FOR DESIGN INFORMATION. DESIGNATION AS INDICATED.
	MOTOR FOR OVERHEAD GATE
	POWER SOURCE LOCATION FOR EQUIPMENT

LUMINAIRE SCHEDULE			
TYPE	LAMP	DESCRIPTION	MANUFACTURER (OR EQUIVALENT)
A-1	400W PS MH	HIGH BAY 400W PULSE START C/W QUICK DISCONNECT PENDANT AND 3' NEMA PLUG	COOPER LIGHTING - LUMARK MPSE-ENSA23-M-400-277V-QD-PC3
A-2			
B-1	3 LAMP T8 32W	4' VAPORTITE INDUSTRIAL FLUORESCENT	COOPER LIGHTING - METALUX VT2-332DR-UNV-GL-EB81-WL-SSL-PALC
B-2	3 LAMP T8 32W	4' VAPORTITE INDUSTRIAL FLUORESCENT	COOPER LIGHTING - METALUX VT2-332DR-UNV-EM-EB81-WL-SSL-PALC
C-1	LED	EXIT SIGN, 120/277V, WET LOCATION BATTERY BACKUP	HOWARD LIGHTING HL0226-BG
C-2	LED	EXIT LIGHT, 120/277V, THERMOPLASTIC EXIT SIGN	HOWARD LIGHTING HL0201-BGW
D-1	35W	WALL LIGHT, 120/277V 35W HIGH PRESSURE SODIUM	DAY BRITE WLS035M1N-LP
D-2'	70W	WALL LIGHT, 120/277V 70W HIGH PRESSURE SODIUM	DAY BRITE WLS070M1N-LP
E	40W	SHOWER LIGHT, 120V 40W-LAMP A19	THOMAS LIGHTING TPSH12
F	-	50 CFM HEAVY DUTY FAN W/LIGHT	NUTONE HDS0LNT
G-1	3-LAMP T8 32W	OFFICE LIGHTING PREMIUM GRID 2'x4' TROFFER	COOPER LIGHTING - METALUX 2GR8-332A-120V-EBB1
G-2	3-LAMP T8 32W	OFFICE LIGHTING PREMIUM GRID 2'x4' TROFFER	COOPER LIGHTING - METALUX 2GR8-332A-120V-EL-EBB1
H-1	3-LAMP T8 17W	OFFICE LIGHTING PREMIUM GRID 2'x2' TROFFER	COOPER LIGHTING - METALUX 2GC8-317A-120V-EBB1
H-2	3-LAMP T8 17W	OFFICE LIGHTING PREMIUM GRID 2'x2' TROFFER	COOPER LIGHTING - METALUX 2GC8-317A-120V-EM-EBB1



NOTES:

- FOR EXACT QUANTITY OF DEVICES, REFER TO FLOOR PLANS.
- CONFIRM EXACT LOCATION FOR HEAD END CONTROLLER EQUIPMENT.
- CCTV TO BE PROVIDED BY OTHERS. DIVISION 16 TO PROVIDE EMPTY CONDUIT INFRASTRUCTURE ONLY. CONFIRM ALL REQUIREMENTS WITH NOMINATED VENDOR.
- MOUNT CCTV CAMERA JUST BELOW CEILING LEVEL UNLESS OTHERWISE NOTED. PROVIDE A JUNCTION BOX ABOVE CEILING AND EACH CAMERA LOCATION AND EXTEND WIRING IN 1/2" CONDUIT FROM JUNCTION BOX BACK TO CONTROLLER. PROVIDE A DUPLEX OUTLET ADJACENT TO JUNCTION BOX.

2
E0.0 CCTV RISER DIAGRAM
SCALE: N.T.S.

GENERAL NOTES:
1. ALL ELECTRICAL EQUIPMENT ENCLOSURES SHALL BE NEMA 4X TYPE AND RATED FOR WATERTIGHT, DUSTTIGHT, CORROSION-RESISTANT, AND INDOOR-OUTDOOR ENVIRONMENTS.
2. OUTLETS SHALL NOT BE INSTALLED BACK TO BACK IN PARTITIONS. STAGGER TO PREVENT SOUND TRANSFER.
3. FOR PHASING OF WORK, REFER TO ARCHITECTURAL CONSULTANTS DOCUMENTS.

DRAWING LIST	
DWG. No.	DESCRIPTION
E0.0	LEGEND & DETAILS ELECTRICAL
E0.1	DETAILS ELECTRICAL
E0.1A	DETAILS ELECTRICAL
E0.2	GROUNDING DETAILS ELECTRICAL
E0.3	LIGHTNING PROTECTION DETAILS 1/2
E0.4	LIGHTNING PROTECTION DETAILS 2/2
E0.5	SPECIFICATION ELECTRICAL
E1.0	FIRST FLOOR PLAN LIGHTING
E1.1	SECOND FLOOR PLAN LIGHTING
E2.0	FIRST FLOOR POWER & SYSTEMS
E2.1	SECOND FLOOR POWER & SYSTEMS
E3.0	ROOF PLAN LIGHTNING PROTECTION

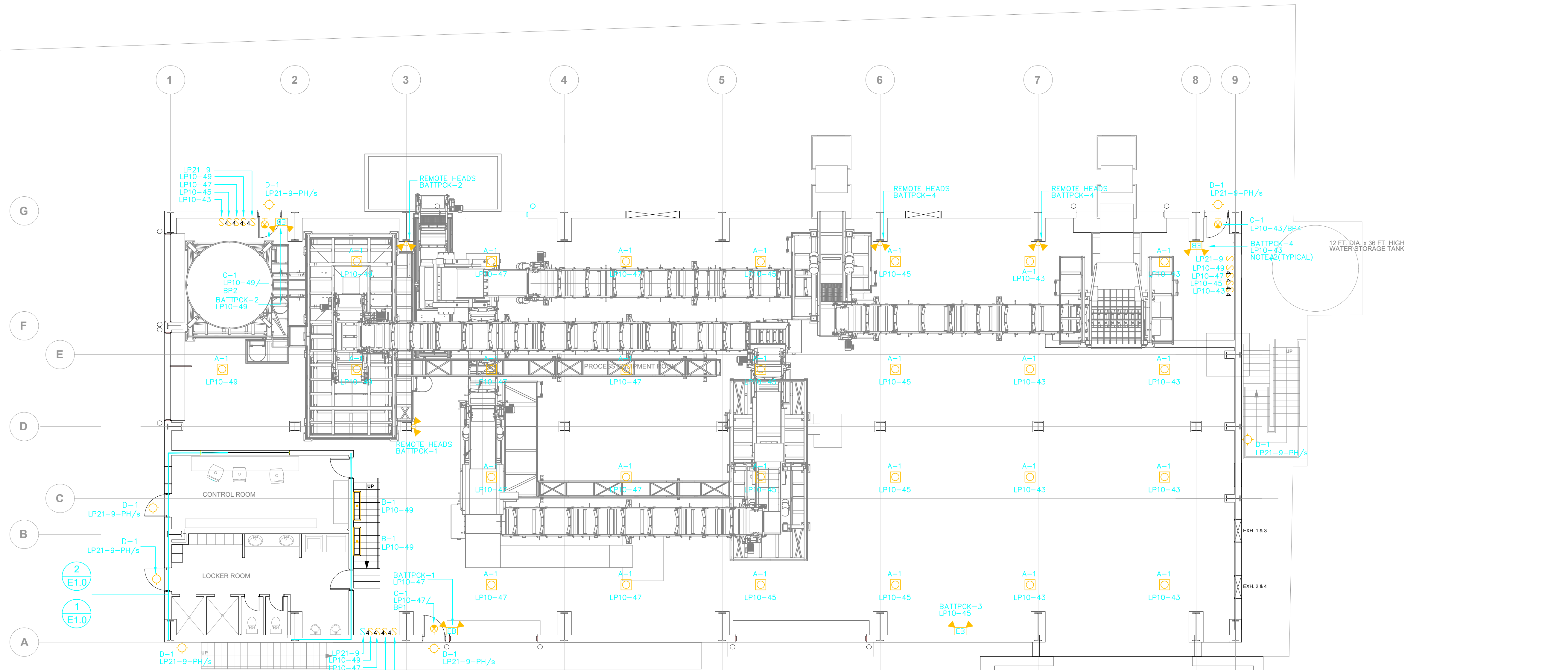
IN ASSOCIATION WITH:

SPECTRUM
CONSULTING SERVICES LTD.

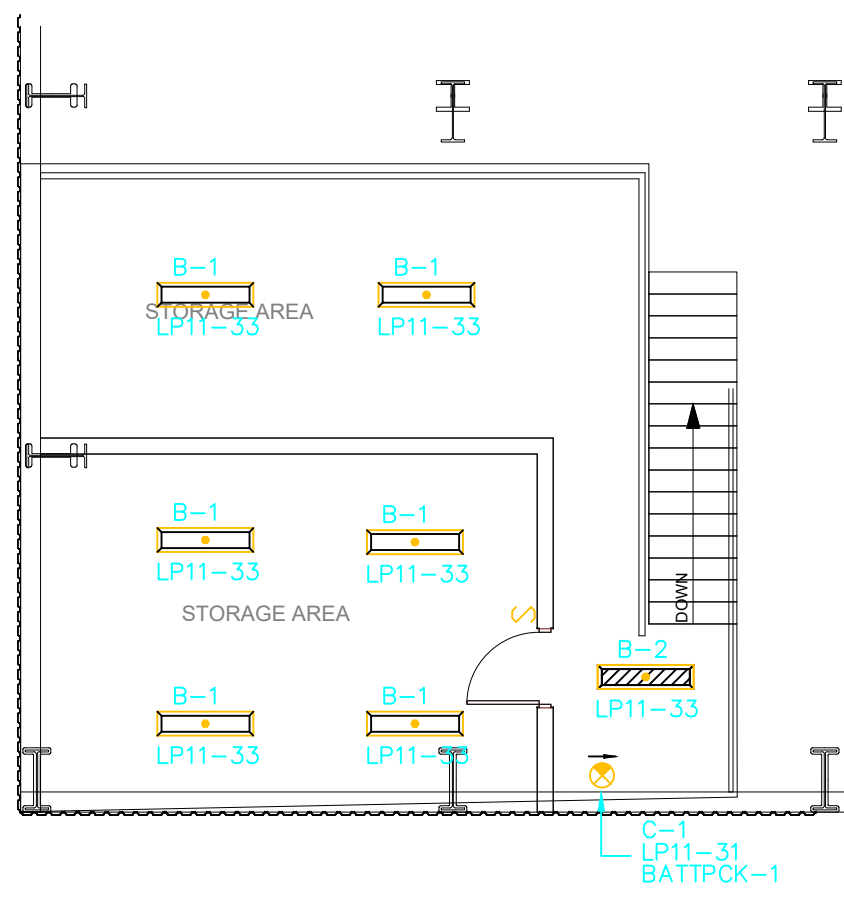
P.O. Box HM3174, Hamilton HMNX, Bermuda
Tel: (441)295-0555 Fax: (441)295-4252

AMMENDMENTS:

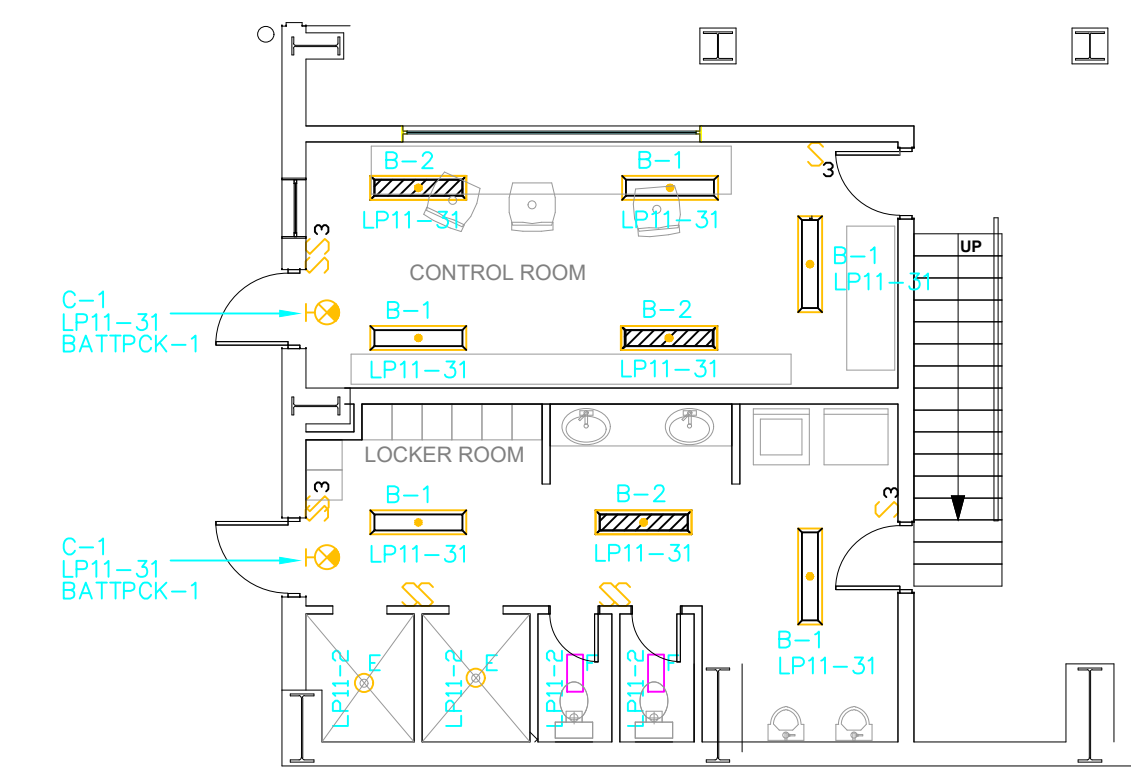
NO	REVISION	BY	DATE
A			JUL.09
B	VARIOUS	JOC	AUG.09



1
FIRST FLOOR PLAN
LIGHTING LAYOUT
Scale: 1/8" = 1'-0"



2
MEZZANINE FLOOR PLAN
Scale: 1/8" = 1'-0"



3
MEZZANINE FLOOR PLAN
Scale: 1/8" = 1'-0"

EXISTING BUILDING

NOTES:

- TYPE A1 LIGHTING SHALL BE HUNG FROM SLAB USING QUICK DISCONNECT DI-CAST PENDANT MOUNT BOX SUPPLIED WITH THE LIGHT. ELECTRICAL CONTRACTOR SHALL PROVIDE AND INSTALL NEW NEMA L7-15P RECEPTACLE AT EACH A1 LOCATION FOR CONNECTION TO LIGHT. WIRE AND CONNECT RECEPTACLE TO CIRCUIT AS INDICATED.
- ELECTRICAL CONTRACTOR SHALL PROVIDE AND INSTALL NEW BATTERY PACK UNITS AS SHOWN. BATTERY PACK UNITS SHALL BE WEATHERPROOF INDUSTRIAL THERMOPLASTIC 277VAC24DC C/W 25W TUNGSTEN HALOGEN HEADS. CATALOGUE# LUMACELL RGS-DT SERIES INDUSTRIAL RG245-432-DTF-2LH25W-ZC-LTS. REMOTE HEADS SHALL BE PAR 36 TUNGSTEN WITH TEFLON COATED LENS TYPE CAT# RS-20-WP24V25W-TC. EXITS IN THE PROCESSING ROOM SHALL BE LUMACELL WEATHERPROOF ALL CLIMATE PVC 3000 SERIES EXITS CAT# LER3-500W-4X. WIRE AND CONNECT AS SHOWN.
- ELECTRICAL CONTRACTOR SHALL NOT EXCEED 175' ONE WAY FOR THE CONDUIT AND WIRE RUNS BACK TO PANEL LP11-23,25,27 OR 29 USING #12 WIRE AND SHALL NOT EXCEED 280' ONE WAY FOR ALL CONDUIT AND WIRE RUNS BACK TO PANEL LP11-23,25,27 OR 29 USING #10 WIRE.

Issue For
BUILDING PERMIT

PROJECT NUMBER:
14815

PROJECT NAME:
**ASH PROCESSING BUILDING
TYNES BAY**

**31 PALMETTO ROAD
DEVONSHIRE**

SHEET TITLE:
**FIRST FLOOR PLAN
LIGHTING**

SHEET NUMBER:

E1.0

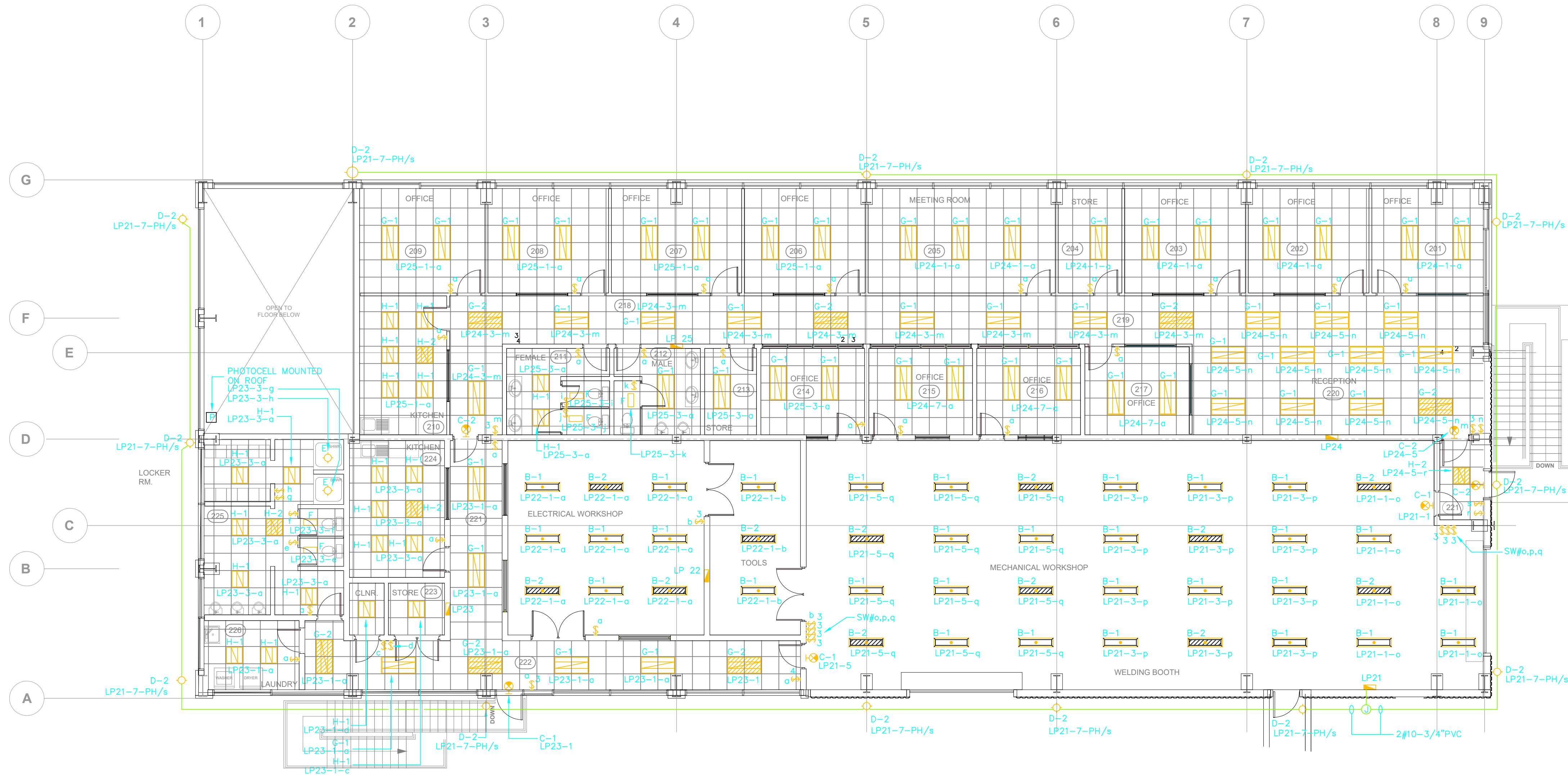
IN ASSOCIATION WITH:



Woodbourne
ASSOCIATES LTD
CONSULTING ENGINEERS, SURVEYORS,
DESIGNERS & VALUERS
P.O. BOX HM 934, HAMILTON,
HM DX, BERMUDA
TEL. 441-295-0319 FAX.441-292-3784

AMMENDMENTS:

NO	REVISION	BY	DATE
A			JUL.09
B	VARIOUS	JOC	AUG.09



**SECOND FLOOR PLAN -
LIGHTING LAYOUT**
1
E1.1
Scale: 1/8" = 1'-0"

- NOTES:
- FOR EXACT LOCATIONS AND MOUNTING HEIGHTS, REFER TO ARCHITECTURAL DRAWINGS AND DETAILS.
 - SWITCH LOCATIONS WITH THE SUBSCRIPT 'g' ARE LINE VOLTAGE SWITCHES FOR ON/OFF CONTROL OF ROOM LIGHTING.
 - EXTERIOR LIGHTING TYPE D-2 SHALL BE CONTROLLED VIA PHOTOCELL WITH SWITCH 's' WIRED IN SERIES FOR MANUAL OVERRIDE OF CIRCUIT.

Issue For
BUILDING PERMIT

PROJECT NUMBER: 14815

PROJECT NAME:
**ASH PROCESSING BUILDING
TYNES BAY**
**31 PALMETTO ROAD
DEVONSHIRE**

SHEET TITLE:
**SECOND FLOOR PLAN
LIGHTING**

SHEET NUMBER:
E1.1