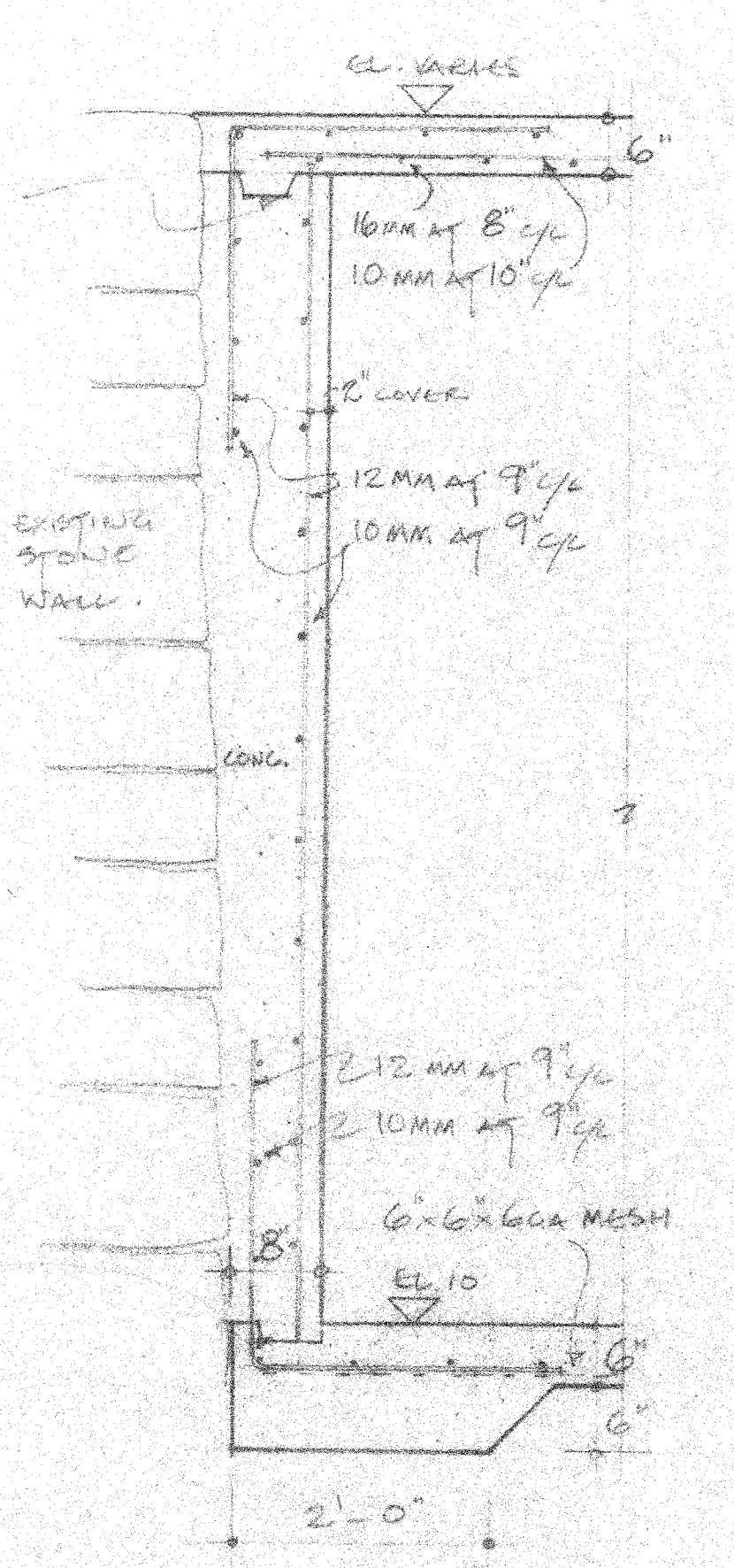
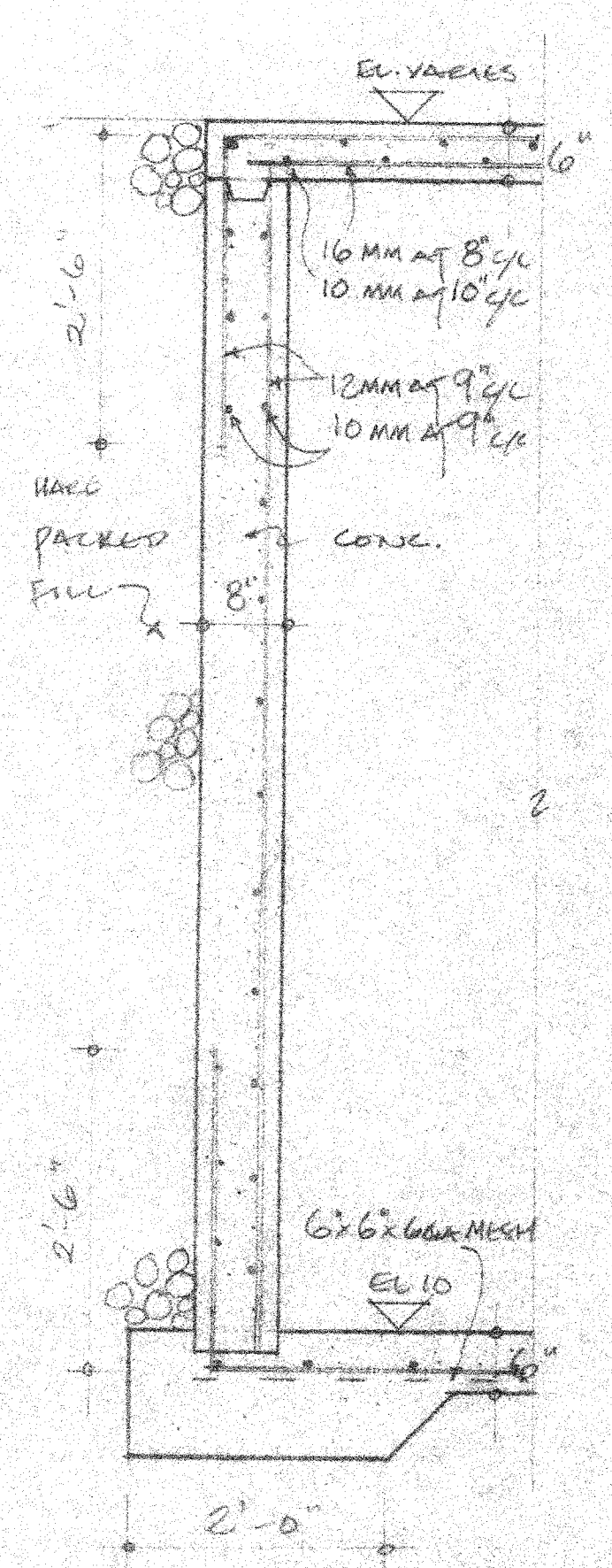


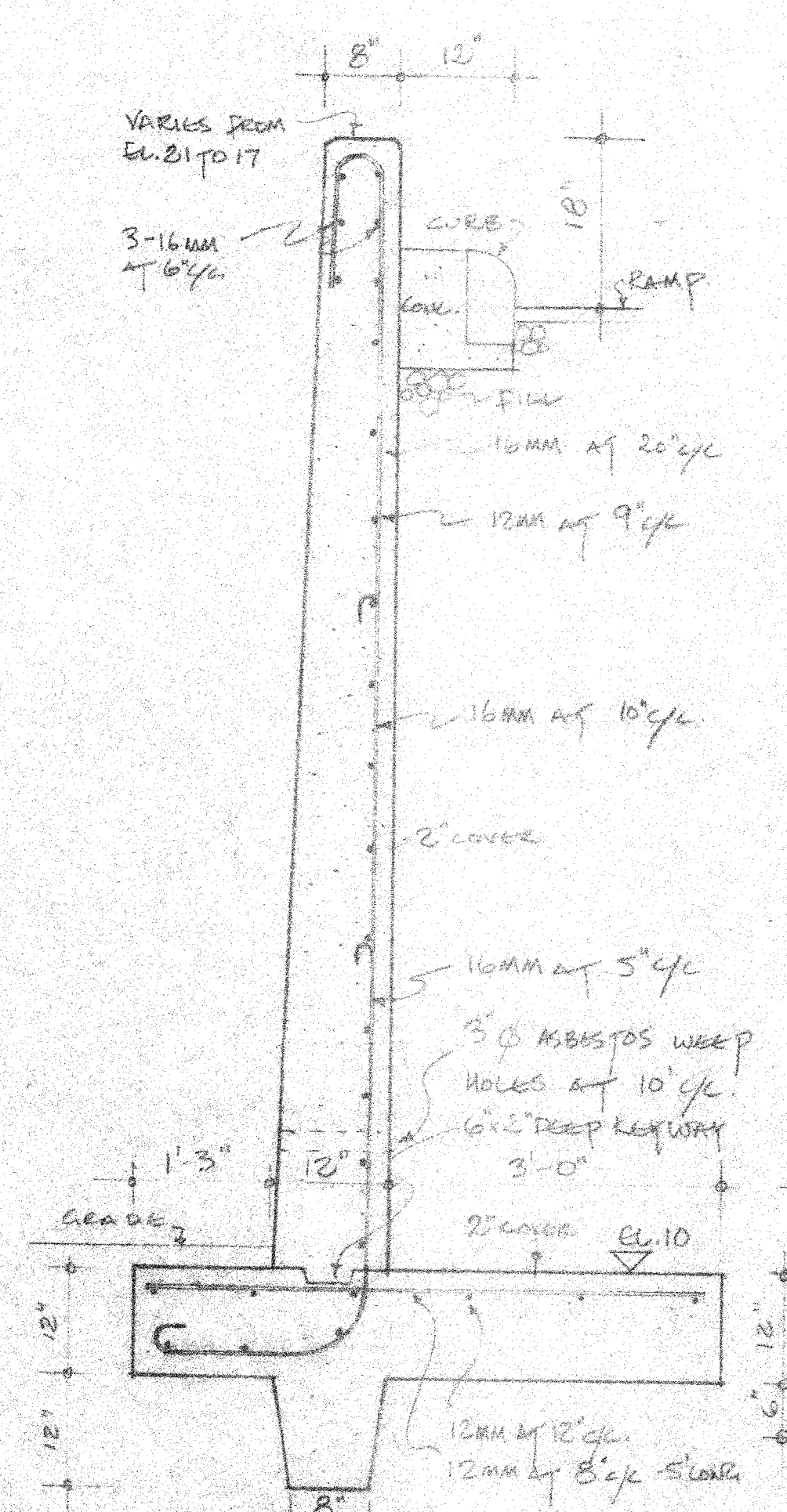
Sec. E-E  
Scale: 3/4" = 1'-0"



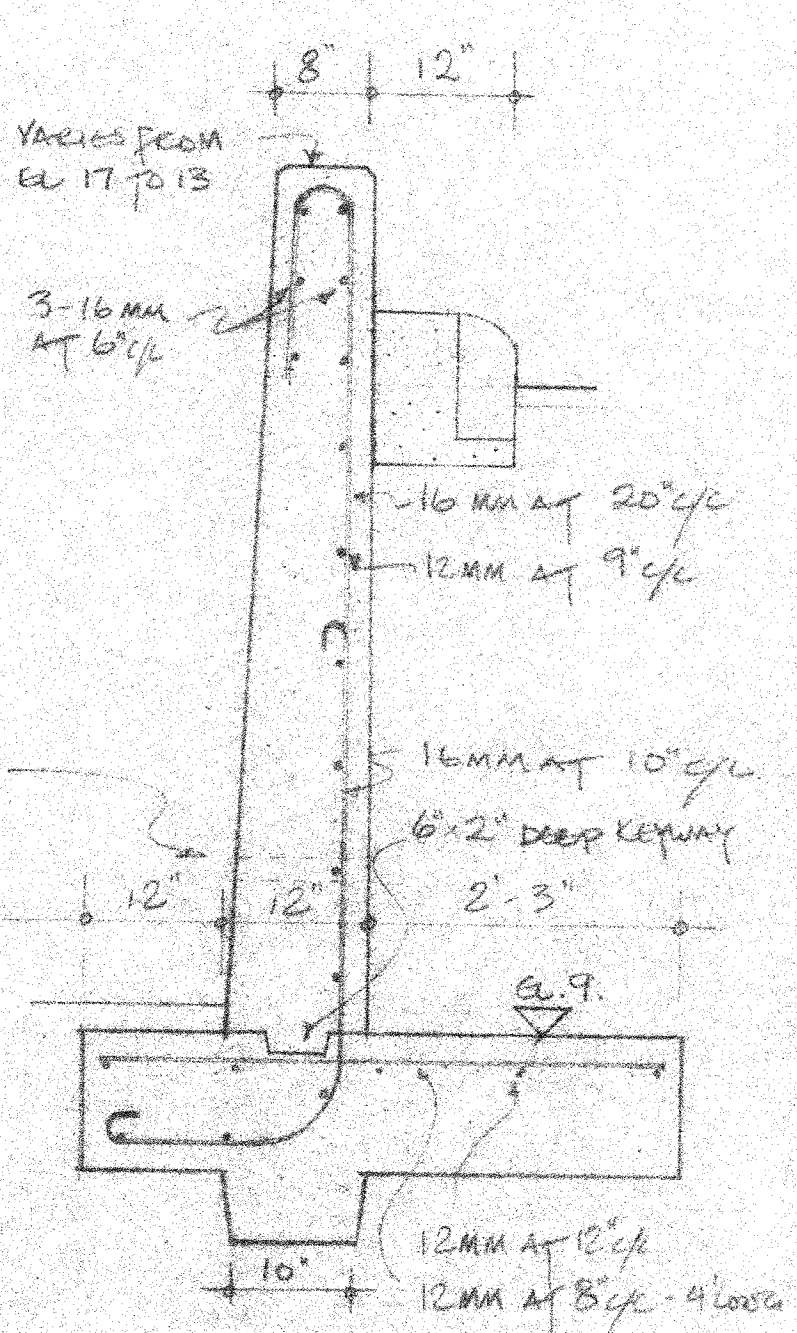
Sec. F-F  
Scale: 3/4" = 1'-0"



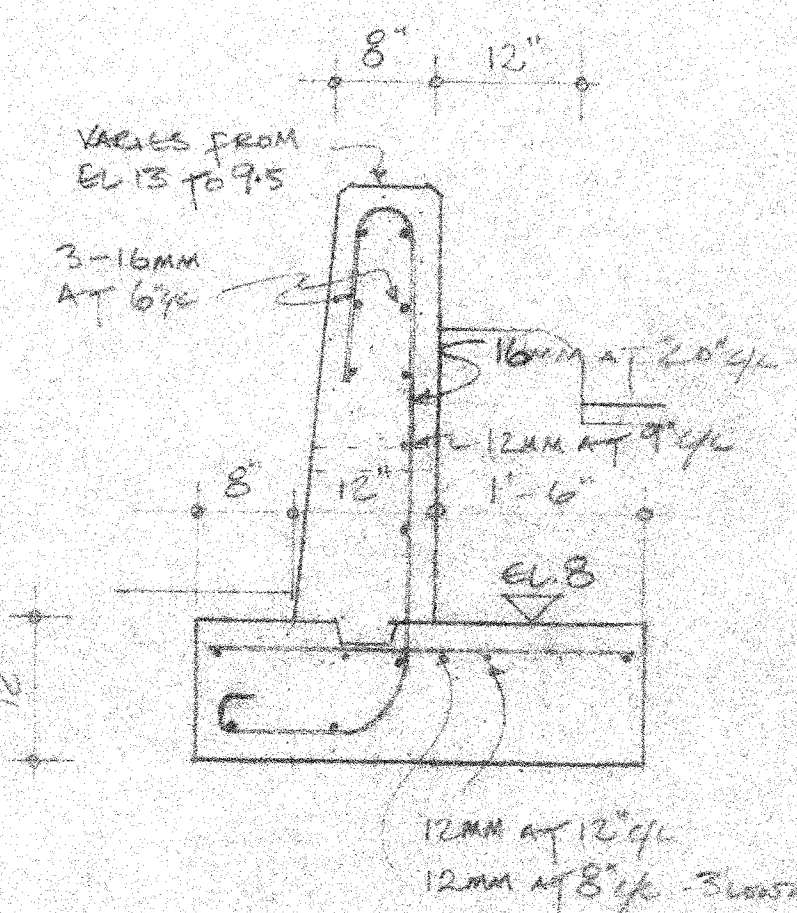
Sec. G-G  
Scale: 3/4" = 1'-0"



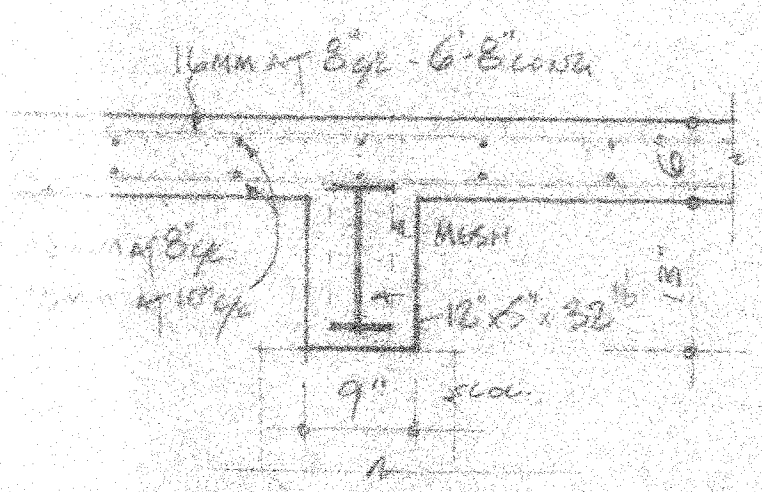
Sec. K-K (W1)  
Scale: 3/4" = 1'-0"



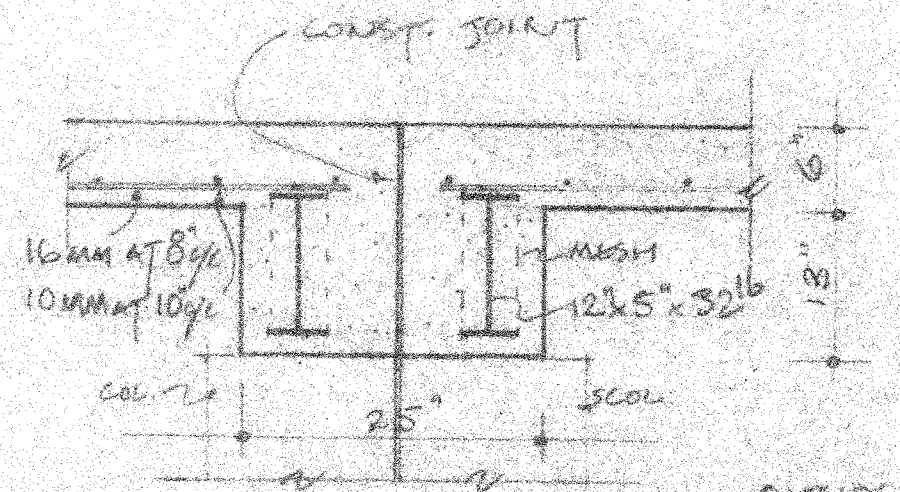
Sec. L-L (W2)  
Scale: 3/4" = 1'-0"



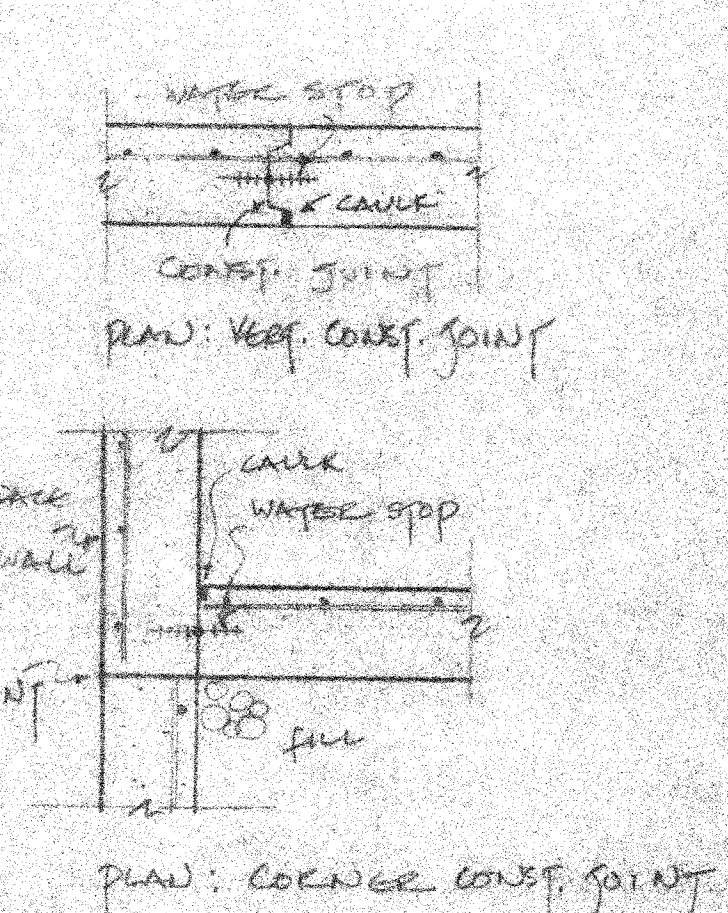
Sec. M-M (W3)  
Scale: 3/4" = 1'-0"



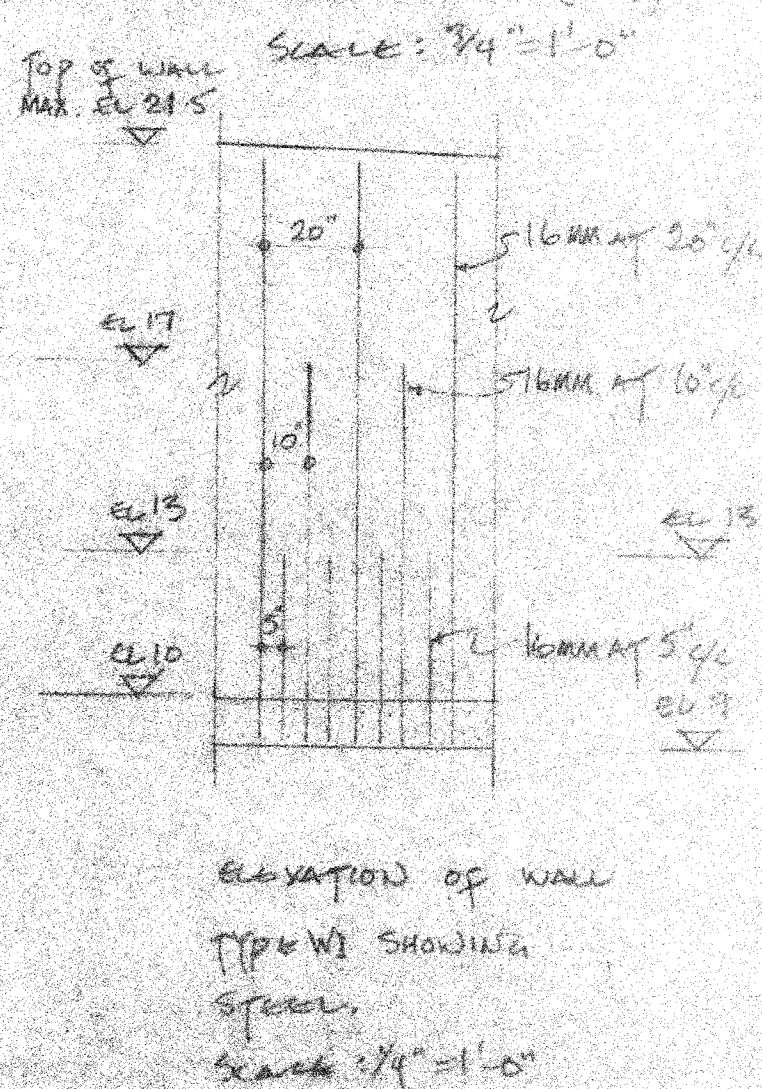
Sec. H-H  
Scale: 3/4" = 1'-0"



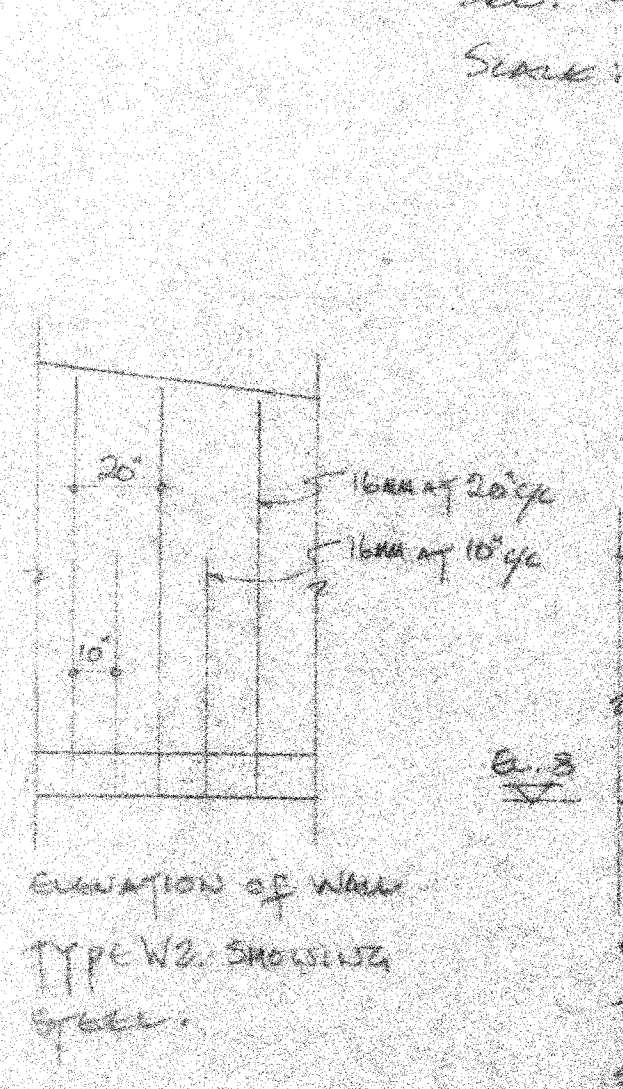
Sec. J-J  
Scale: 3/4" = 1'-0"



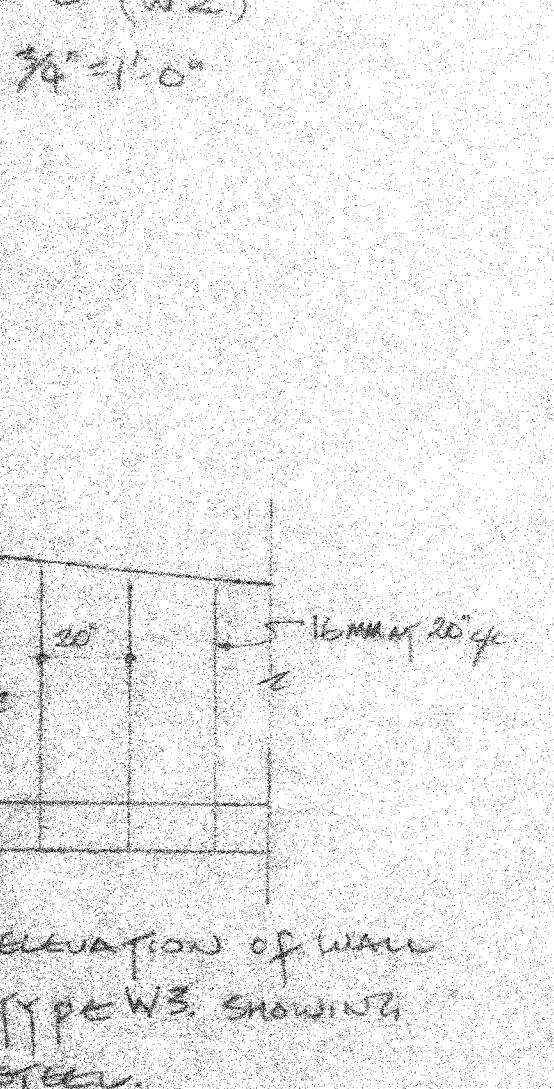
PLAN: CORNER CONST. JOINT



ELEVATION OF WALL TYPE W1 SHOWING STEEL. Scale: 3/4" = 1'-0"



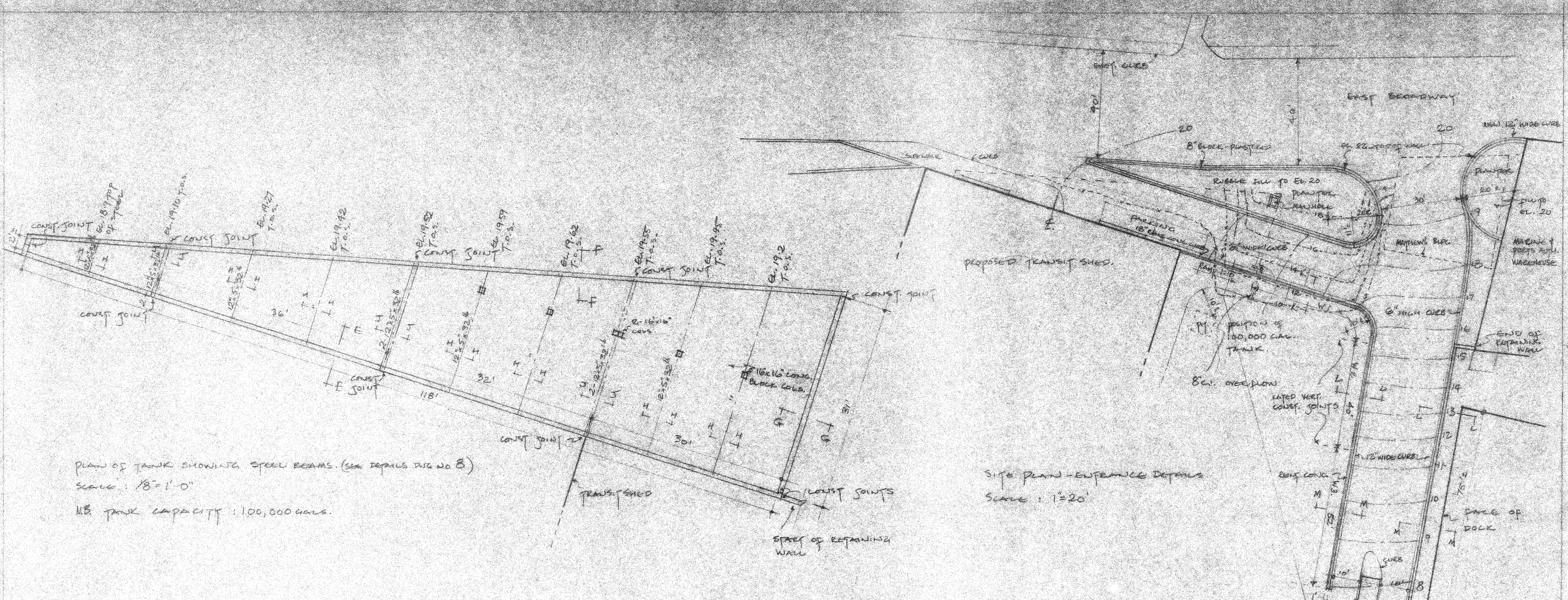
ELEVATION OF WALL TYPE W2 SHOWING STEEL.



ELEVATION OF WALL TYPE W3 SHOWING STEEL.

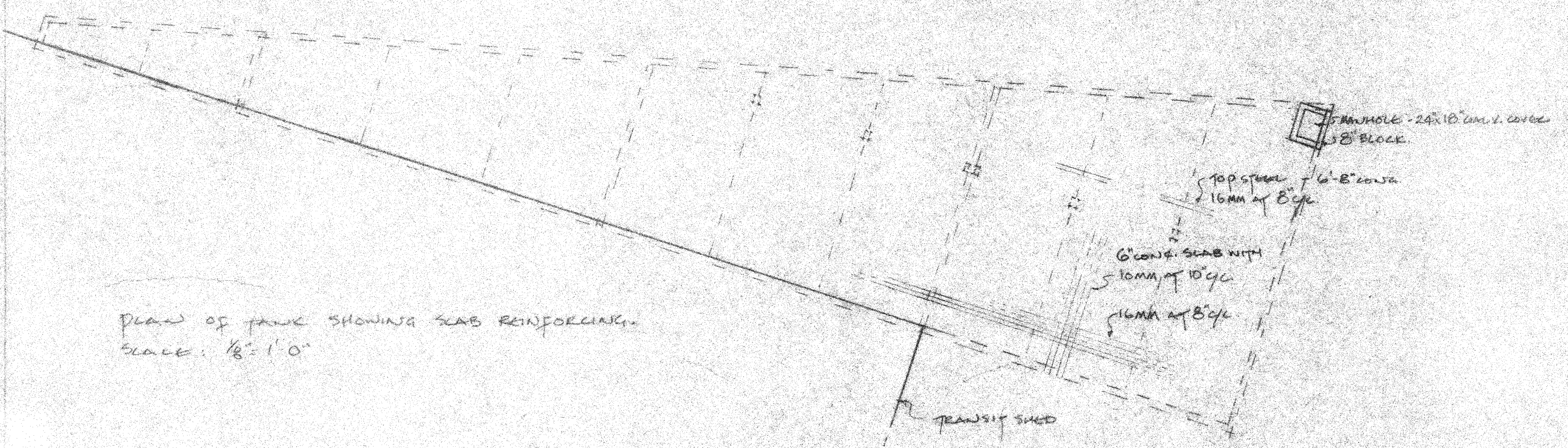
RECEIVED  
JUN 20 1973  
BURLAND, PHILLIPS & HARRISON LTD.

TRANSIT SHED AT NO 8 DOCK HAMILTON
MILES OUBREBRIDGE CIVIL ENGINEER
Draw No 8
Job No 671-741

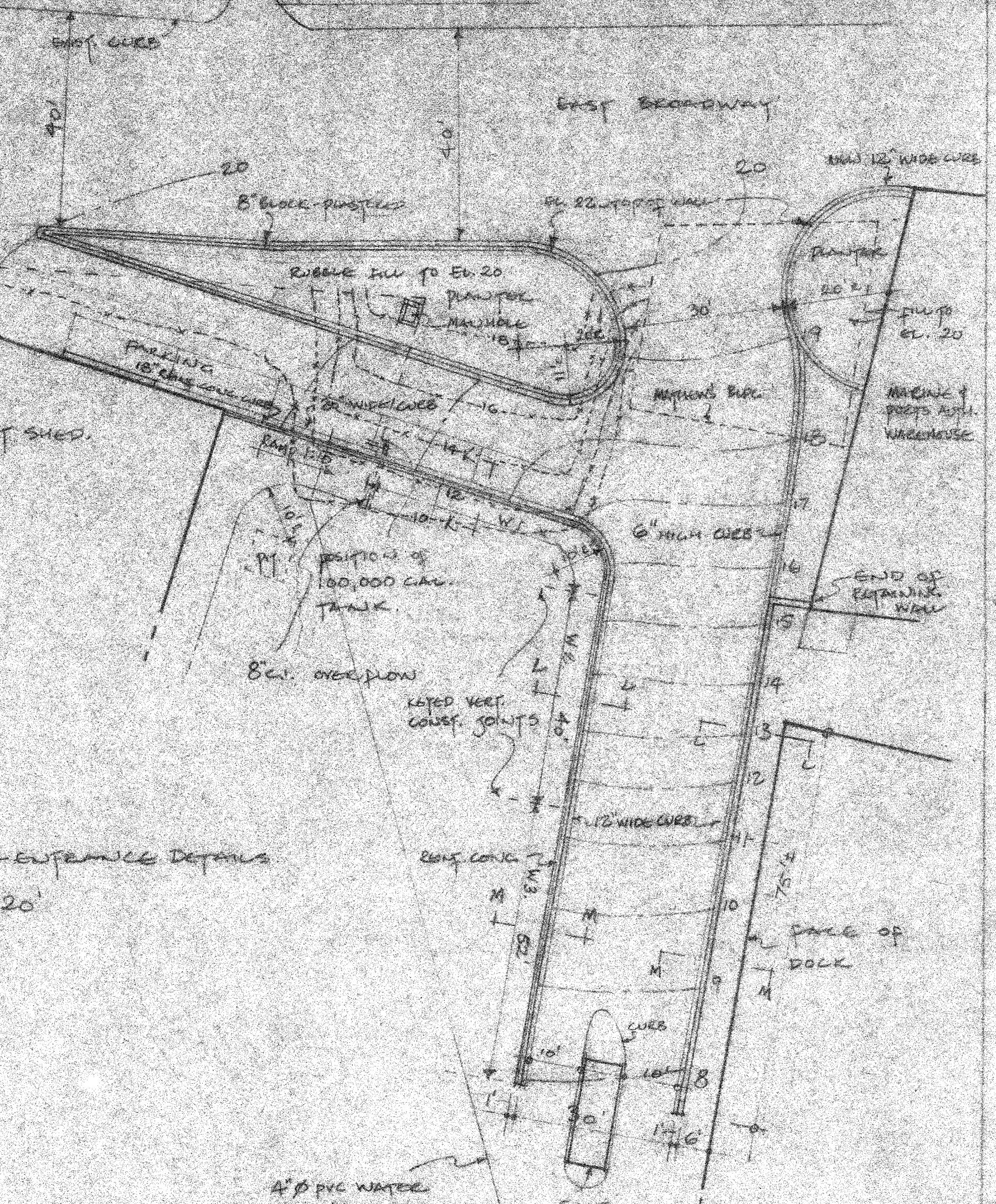


PLAN OF TANK SHOWING STEEL BEAMS. (SEE DETAILS DWG NO 8)  
 SCALE: 1/8" = 1'-0"  
 N.B. TANK CAPACITY: 100,000 GALS.

SITE PLAN - ENTRANCE DETAILS  
 SCALE: 1" = 20'



PLAN OF TANK SHOWING SLAB REINFORCING  
 SCALE: 1/8" = 1'-0"



4" Ø PVC WATER PIPE & VALVE TO EAST FACE OF DOCK. (APPROX. 100' FROM SOUTH FACE)

EXISTING CONTOURS - - - - -  
 PROPOSED - - - - -

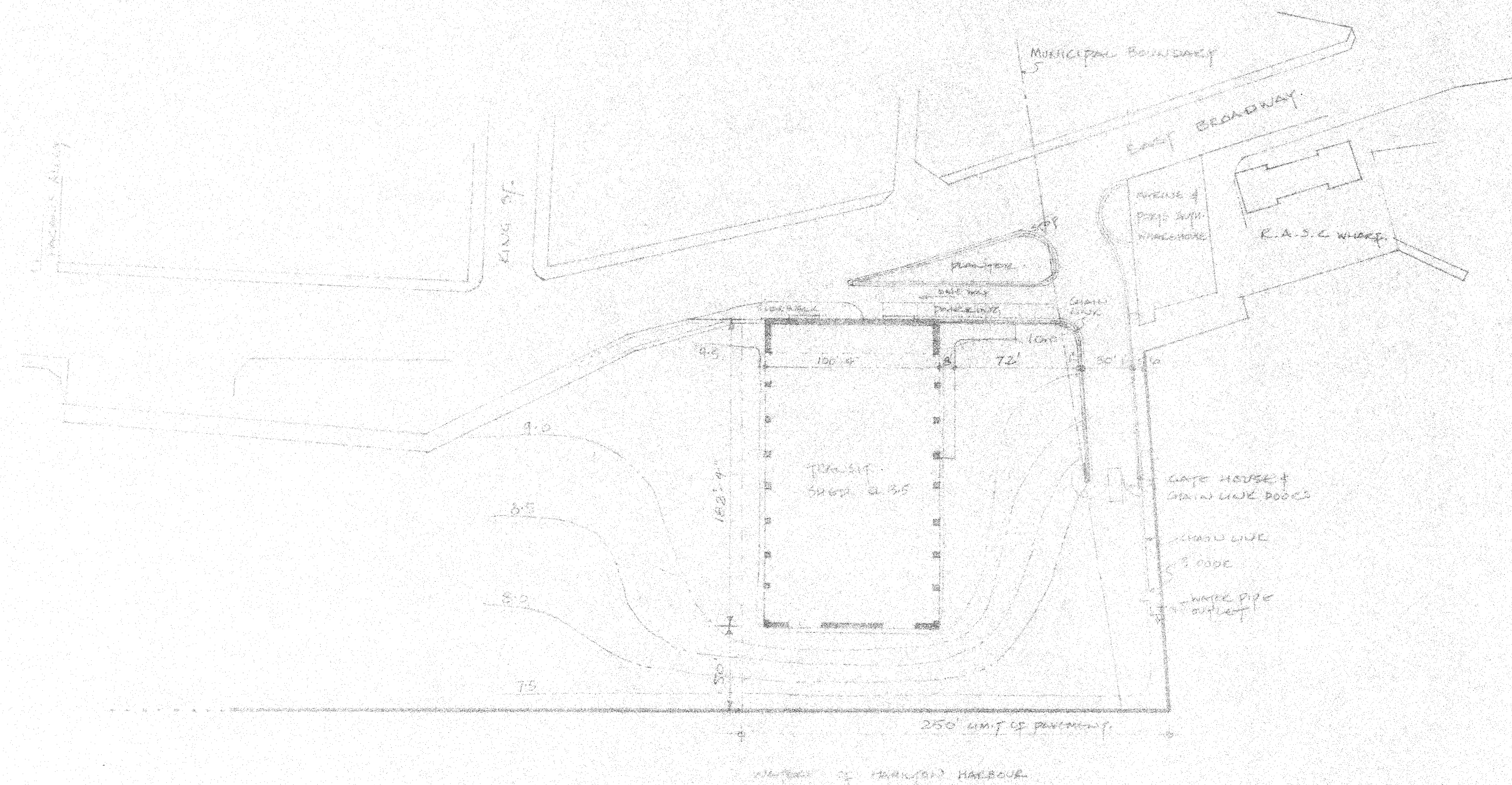
RECEIVED  
 JUN 25 1973  
 DUKLAND, CONYERS & HARRIS LTD.

TRANSIT SHED AT NO 8 DOCK HAMILTON	
MILES OUFORBRIDGE CIVIL ENGINEER	
DWG NO 7	SCALE AS SHOWN
TO BE USED BY 11-1791	DATE JAN 73

TRANSIT SHED

NO 8 DOCK HAMILTON

CORPORATION OF HAMILTON.



Site Plan - No 8 Dock

Scale 1/4" = 10'

RECEIVED

JUN 26 1933

SURNAME, CURTIS & CO. LTD.

TRANSIT SHED AT NO 8 DOCK HAMILTON	
MILES	CUTEBRIDGE
CIVIL	ENGINEER
DWG NO 1	SCALE 1/4" = 10'
JOB NO E-771	DATE JAN '33