

TITLE: MINISTRY OF WORKS AND PROGRAMMING

P.O. Box 9898, Ottawa, Ontario, Canada
K1P 6L3
Telephone: (613) 993-9611
Fax: (613) 993-9610

Structures - Section

GENERAL NOTES:

DESIGNED FOR: BUILDING PERMIT 17203/01

NO.	REVISION	DATE

SCALE: AS SHOWN

DESIGN	DATE
DESIGNED BY:	DATE:
CHECKED BY:	DATE:
APPROVED BY:	DATE:
CHECKED BY:	DATE:

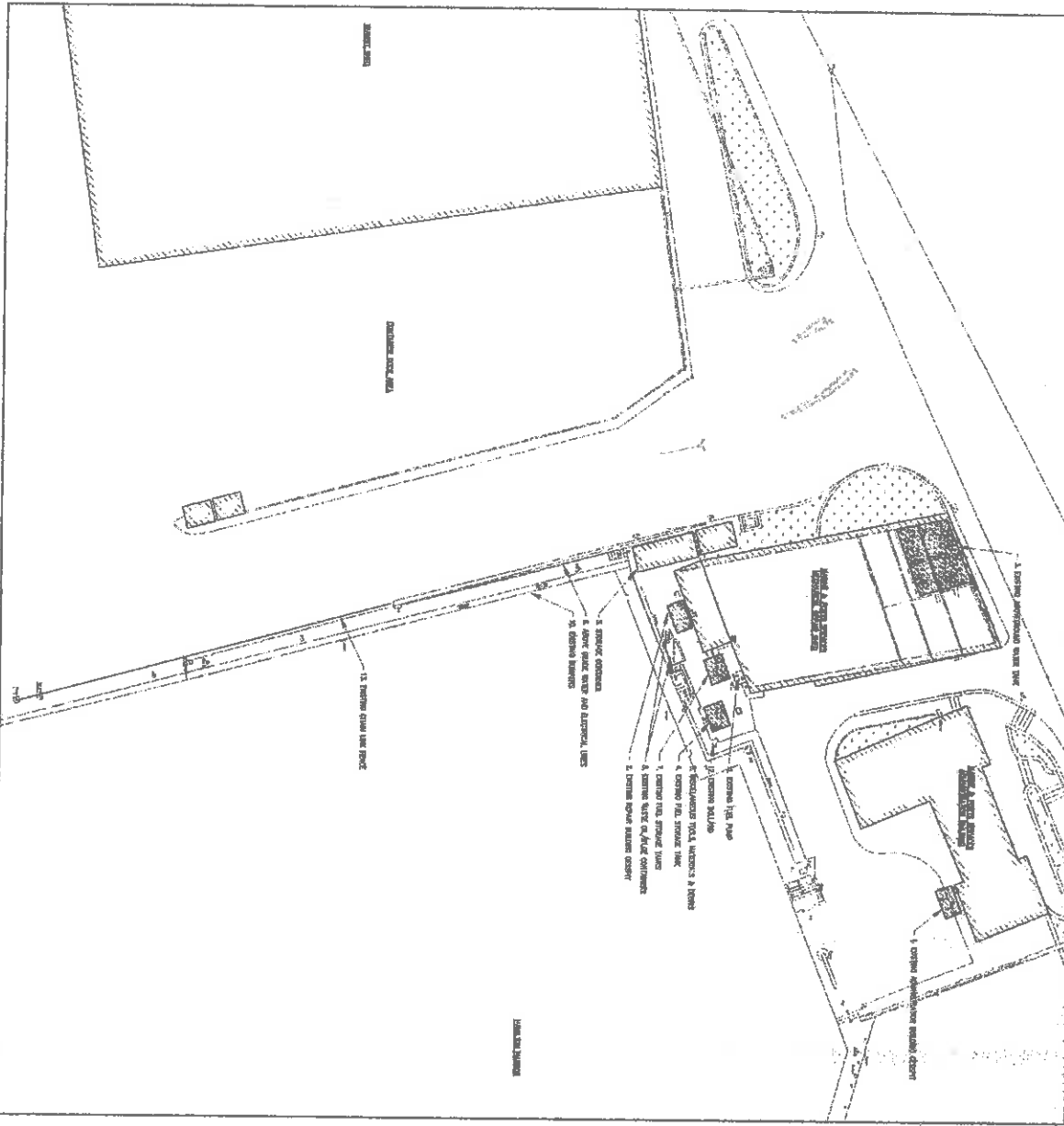
PROJECT NUMBER:
61/25/01

PROJECT NAME:
**REPLACEMENT
FERRY PROJECT
HAMILTON DEPOT**

DRAWING FILE NO:
ACD P-11

SHEET TITLE:
REMOVALS

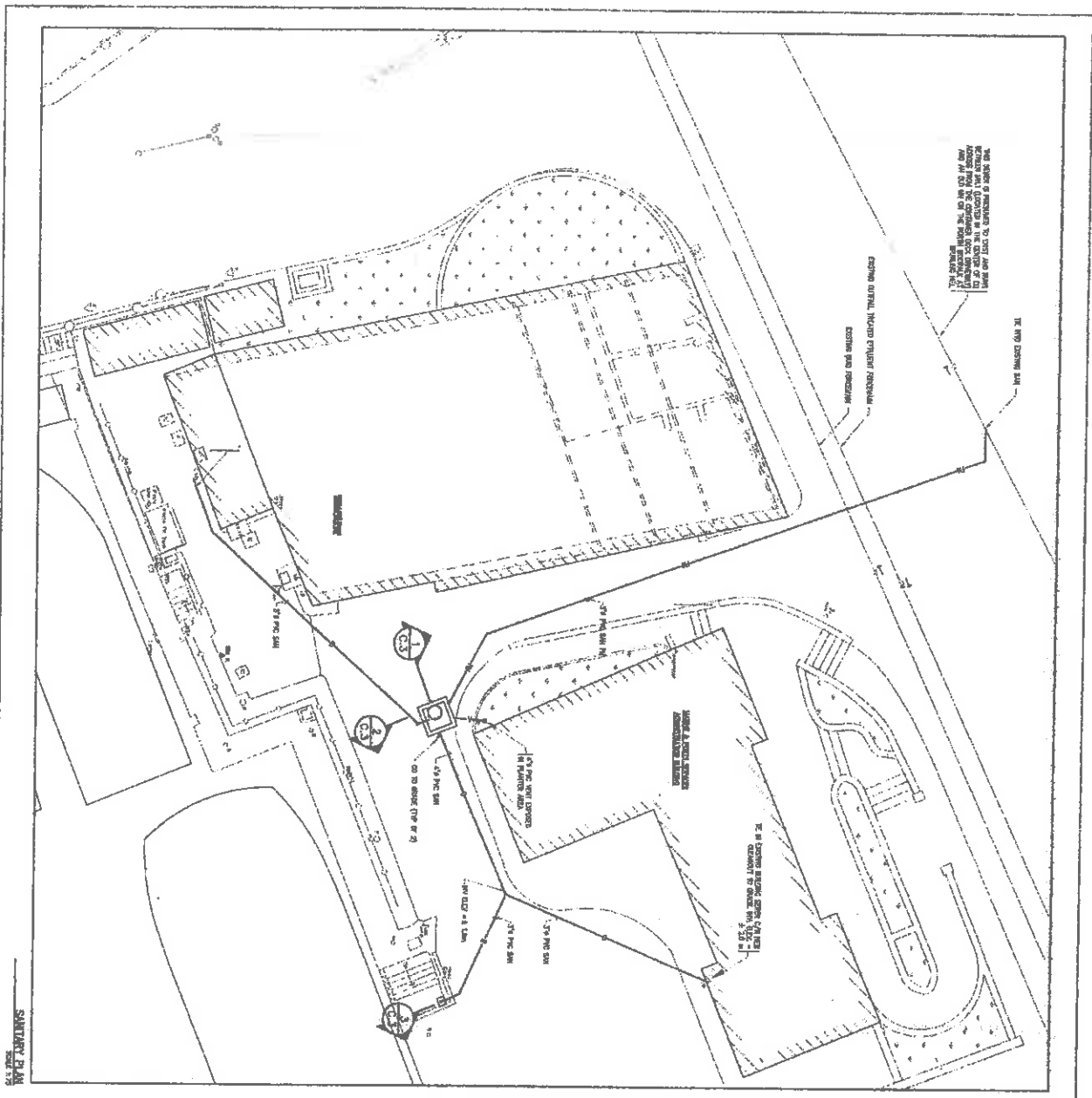
SHEET NUMBER	REVISION
C1	



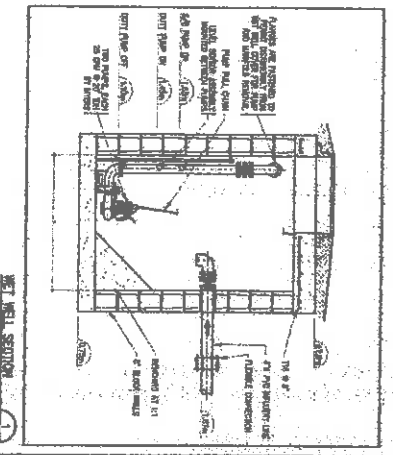
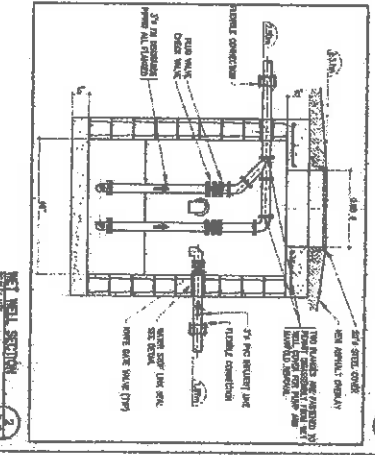
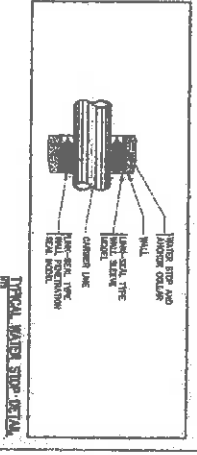
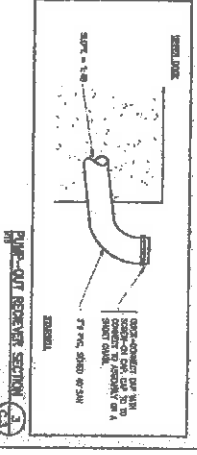
NOTES

1. Existing foundations remain in place.
2. Existing concrete walls remain in place.
3. Existing concrete slabs remain in place.
4. Existing concrete columns remain in place.
5. Existing concrete beams remain in place.
6. Existing concrete walls remain in place.
7. Existing concrete slabs remain in place.
8. Existing concrete columns remain in place.
9. Existing concrete beams remain in place.
10. Existing concrete walls remain in place.
11. Existing concrete slabs remain in place.
12. Existing concrete columns remain in place.

The notes provide detailed instructions for the removal and retention of existing structural elements. They specify that existing foundations, walls, slabs, columns, and beams are to be retained in place. The drawings show the locations of these elements and the areas to be removed or replaced. The notes also mention that the existing concrete is to be removed and replaced with new concrete. The drawings show the locations of the new concrete elements and the areas to be removed or replaced. The notes also mention that the existing concrete is to be removed and replaced with new concrete. The drawings show the locations of the new concrete elements and the areas to be removed or replaced. The notes also mention that the existing concrete is to be removed and replaced with new concrete. The drawings show the locations of the new concrete elements and the areas to be removed or replaced.



SANITARY PLAN



THE MINISTRY OF WORKS AND ENGINEERING

PROJ. NO. 10000 10000 10000 10000
 CONSULTING AND ENGINEERING
 276 (416) 291-1100

Structures Section

GENERAL NOTES

NO.	REVISION	APP.	DATE

ISSUED FOR: MAJOR PROJECT 17/03/01
 PREPARED BY: [Name]
 CHECKED BY: [Name]
 DATE: [Date]

PROJECT NAME: REPLACEMENT FERRY PROJECT HAMILTON DEPOT HAMILTON
 PROJECT NUMBER: 61/26/01
 DRAWING FILE NO: ACO R-1-1

SHEET TITLE: ALTERNATIVE SANITARY SYSTEM PLAN & DETAIL
 SHEET NUMBER: C3
 DRAWING NUMBER: [Number]

THE MINISTRY OF
WORKS AND
ENGINEERING

P.O. Box 10700, Montreal, Quebec, H3V 1X2, Canada

Structures and
Construction Division
755 (441)90-4750

Structures Section

DESIGN NOTES:

SCALE FOR RAILING POINT 17/03/00

APPROVED:	NO.	REVISION	DATE

SCALE AS SHOWN

DESIGNED BY:
 CHECKED BY:
 DATE:
 DATE:

APPROVED BY:
 DATE:
 DATE:

PROJECT NUMBER:

61/25/01

PROJECT NAME:

**REPLACEMENT
FERRY PROJECT
HAMILTON DEPOT**

BERGUDA

DRAWING FILE NO. AOD-R-14

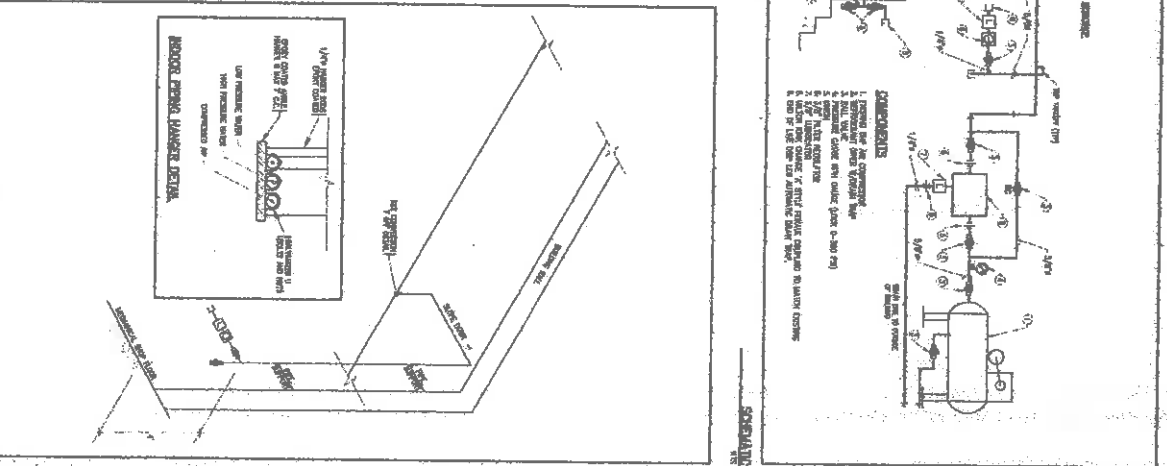
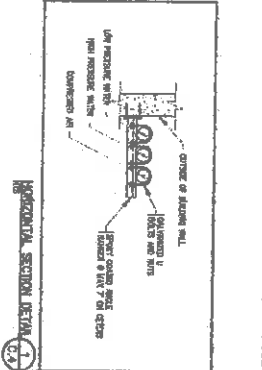
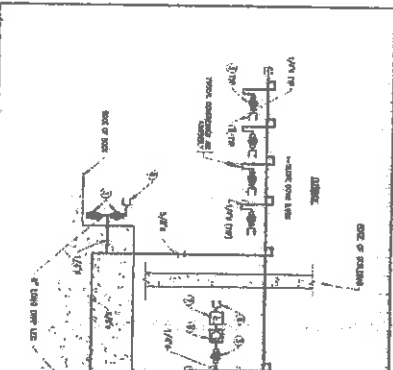
SHEET TITLE:

**NEW COMPRESSED AIR
SYSTEM PLAN & DETAIL**

SHEET NUMBER:

C4

REVISION



Scale: 1/8" = 1'-0" Building Height: 17/20/70

DATE: 17/02/70

BY: [Signature]

NO.	REVISION	DATE

DATE: 17/02/70

BY: [Signature]

BY: [Signature]

BY: [Signature]

BY: [Signature]

BY: [Signature]

BY: [Signature]

BY: [Signature]

BY: [Signature]

BY: [Signature]

BY: [Signature]

BY: [Signature]

BY: [Signature]

BY: [Signature]

BY: [Signature]

BY: [Signature]

BY: [Signature]

BY: [Signature]

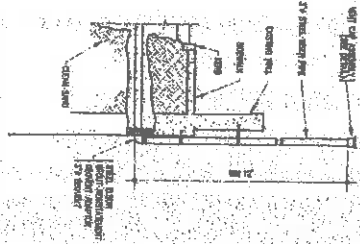
BY: [Signature]

BY: [Signature]

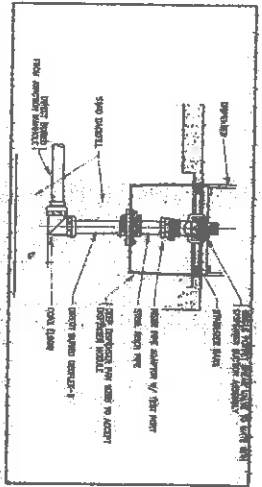
BY: [Signature]

BY: [Signature]

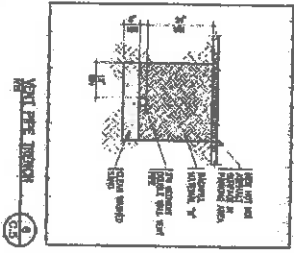
BY: [Signature]



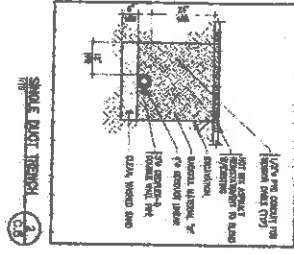
VENT PIPE DETAIL



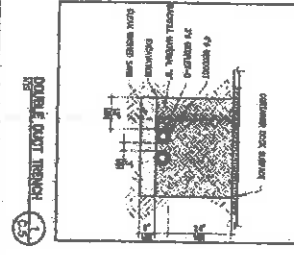
FUEL DISPENSER PAN FRAME DETAIL



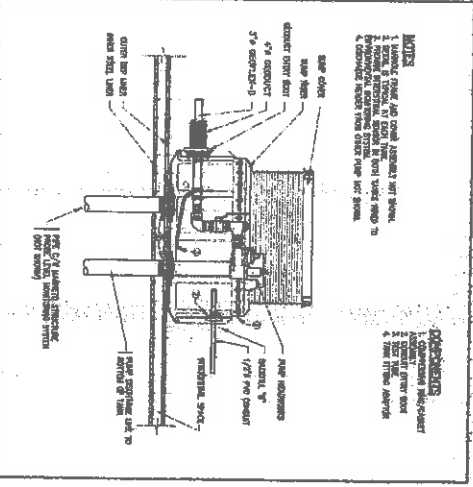
VENT PIPE THROUGH ROOF



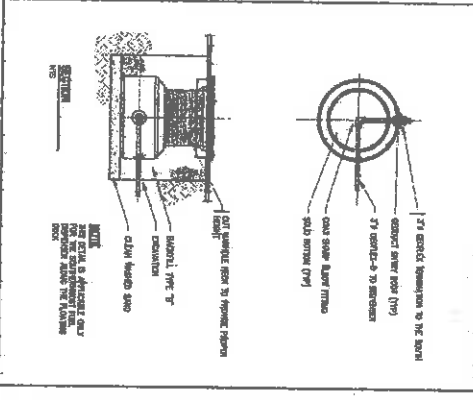
SINGLE DUCT THROUGH ROOF



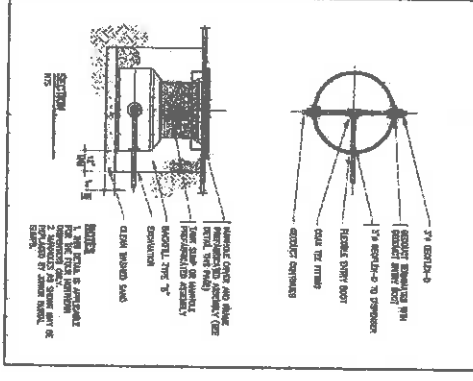
DOUBLE DUCT THROUGH ROOF



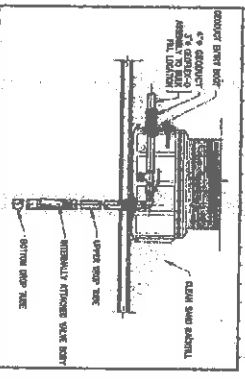
JUNCTION MANIFOLD DETAILS



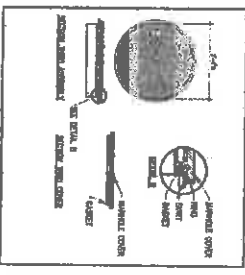
JUNCTION MANIFOLD DETAILS



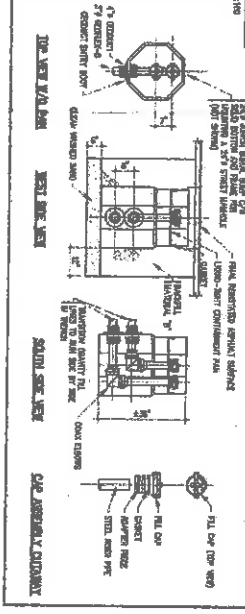
JUNCTION MANIFOLD DETAILS



GENERAL FLOAT VALVE DETAIL



MANIFOLD COVER DETAILS



BULK FUEL STATION DETAILS

PROJECT NAME: REPLACEMENT PERRY PROJECT HAMILTON DEPOT

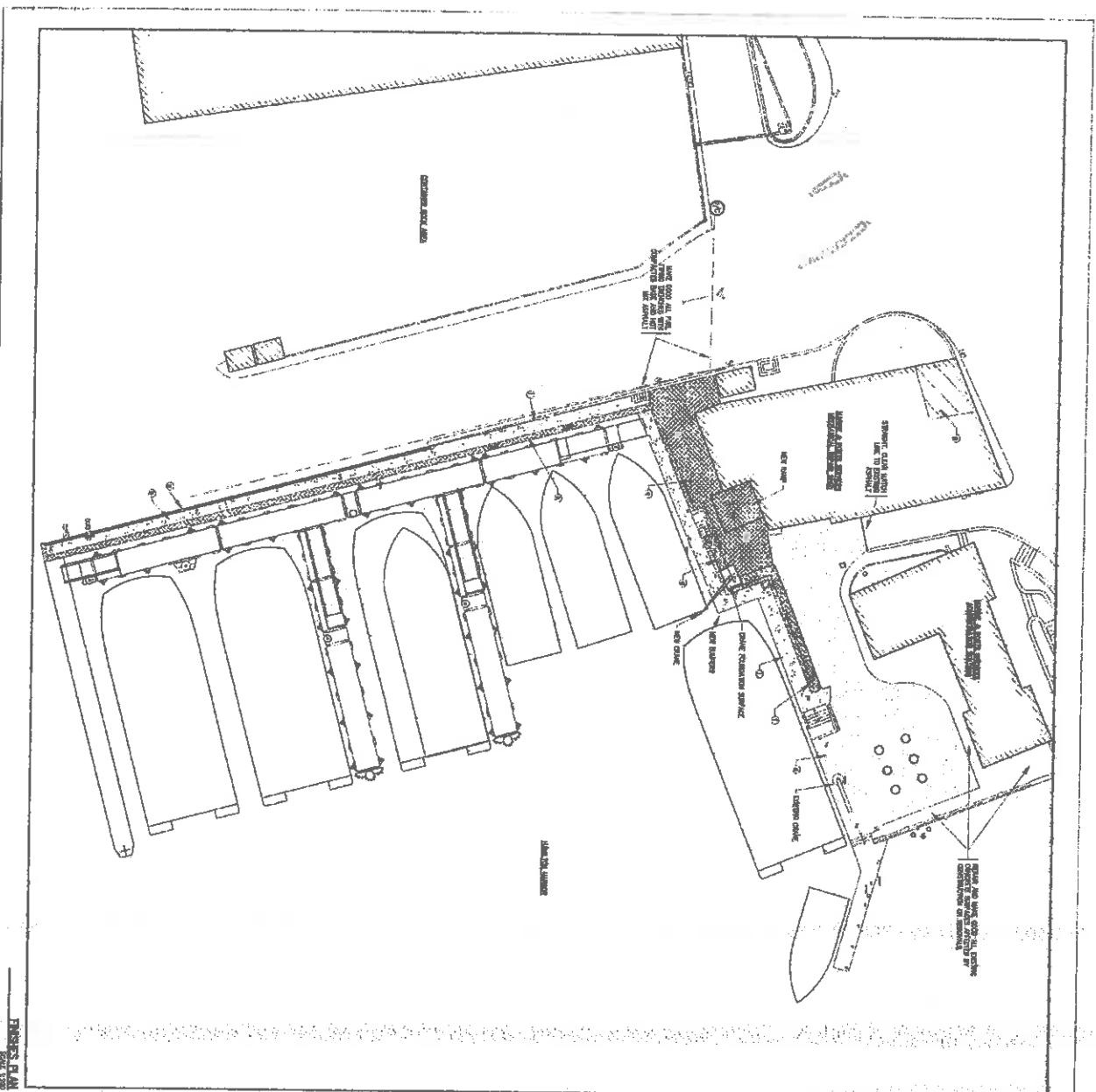
PROJECT NUMBER: 01/24/01

DATE: 17/02/70

BY: [Signature]

BY: [Signature]

BY: [Signature]



FLOOR PLAN
SCALE 1/8" = 1'-0"

REVISIONS

No.	Description	Date
1	Issue for construction	1/17/09
2	Issue for construction	1/17/09
3	Issue for construction	1/17/09
4	Issue for construction	1/17/09
5	Issue for construction	1/17/09
6	Issue for construction	1/17/09
7	Issue for construction	1/17/09
8	Issue for construction	1/17/09
9	Issue for construction	1/17/09
10	Issue for construction	1/17/09

THE MINISTRY OF
WORKS AND
ENGINEERING

P.O. Box 9800, St. John's, NL A1B 6X4
Tel: (709) 553-2100
Fax: (709) 553-1100

Structures Section

APPROVAL AUTHORITY

ISSUED FOR: BALDWIN PROJECT 1/17/09

DATE: 1/17/09

NO.	DESCRIPTION	DATE

DATE: 1/17/09

DATE: 1/17/09

DATE: 1/17/09

DATE: 1/17/09

DATE: 1/17/09

DATE: 1/17/09

DATE: 1/17/09

DATE: 1/17/09

DATE: 1/17/09

DATE: 1/17/09

DATE: 1/17/09

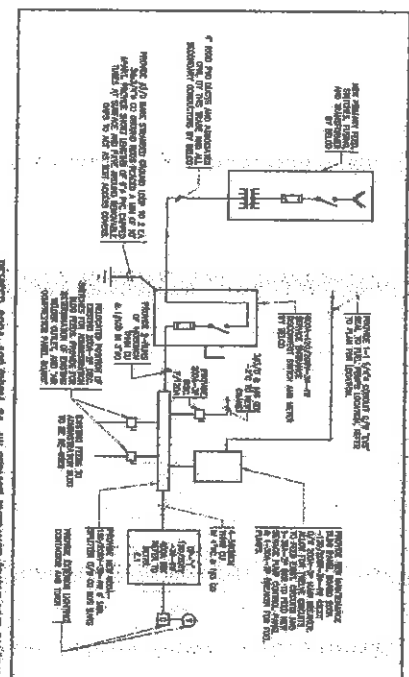
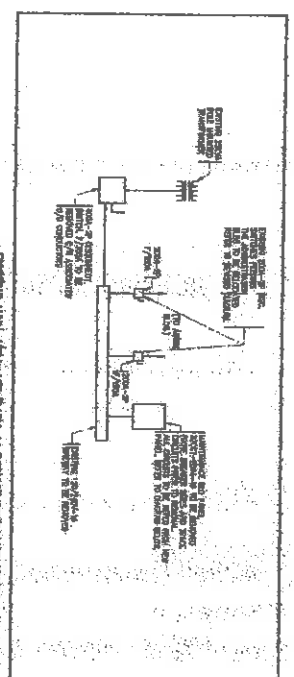
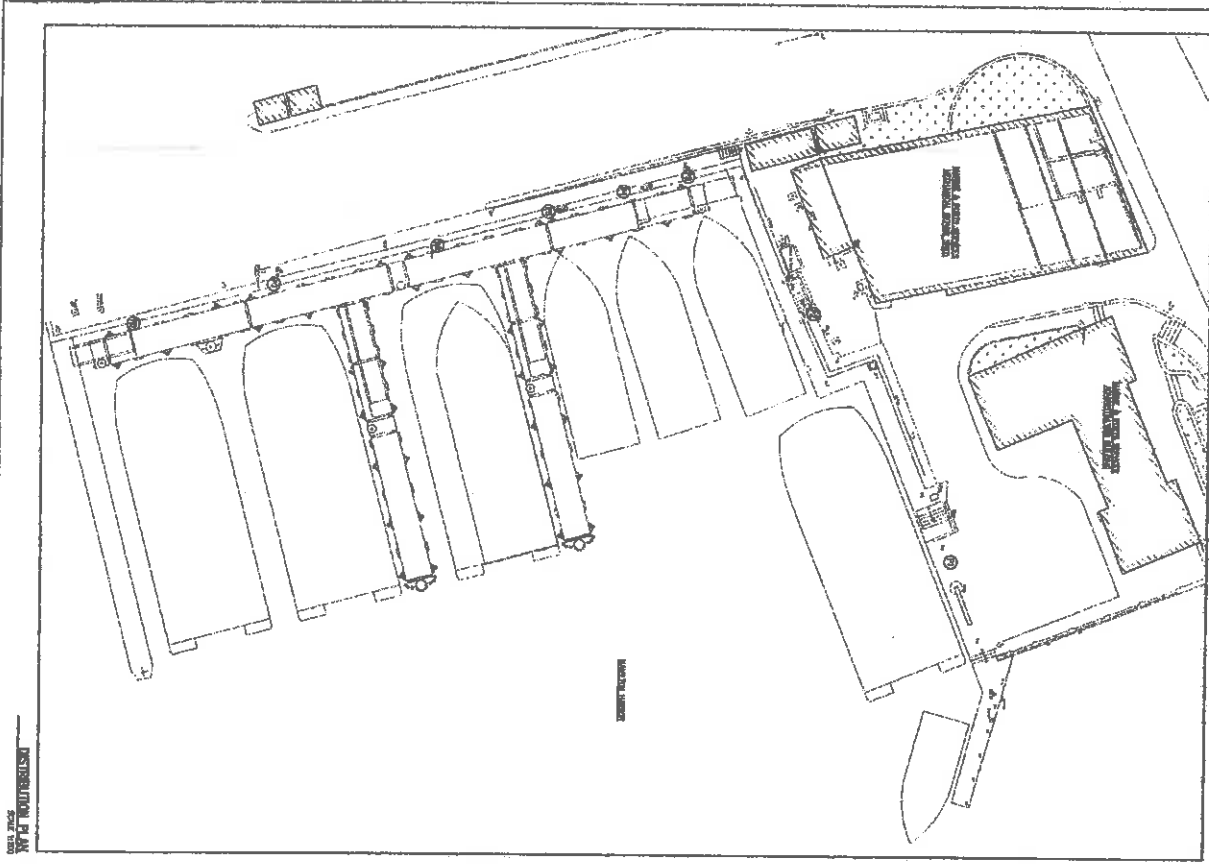
DATE: 1/17/09

DATE: 1/17/09

DATE: 1/17/09

DATE: 1/17/09

DATE: 1/17/09



NOTES:

1. ALL WORK SHALL BE IN ACCORDANCE WITH THE CANADIAN ELECTRICAL CODE AND ALL APPLICABLE REGULATIONS.
2. ALL WORK SHALL BE DONE IN ACCORDANCE WITH THE CANADIAN ELECTRICAL CODE AND ALL APPLICABLE REGULATIONS.
3. ALL WORK SHALL BE DONE IN ACCORDANCE WITH THE CANADIAN ELECTRICAL CODE AND ALL APPLICABLE REGULATIONS.
4. ALL WORK SHALL BE DONE IN ACCORDANCE WITH THE CANADIAN ELECTRICAL CODE AND ALL APPLICABLE REGULATIONS.
5. ALL WORK SHALL BE DONE IN ACCORDANCE WITH THE CANADIAN ELECTRICAL CODE AND ALL APPLICABLE REGULATIONS.

LEGEND:

- WORK TO BE DONE BY OTHERS
- WORK TO BE DONE BY CONTRACTOR

400A MAIN 120/200V-3W-3Ø

NO.	DESCRIPTION	DATE
1	REVISION	
2	REVISION	
3	REVISION	
4	REVISION	
5	REVISION	
6	REVISION	
7	REVISION	
8	REVISION	
9	REVISION	
10	REVISION	

THE MINISTRY OF WORKS AND ENGINEERING

300, rue Victoria, Québec, Québec

Structures Section

ISSUED FOR: BUILING PERMIT 17/05/01

NO: 100000000

DATE: 17/05/01

SCALE AS SHOWN

DESIGNED BY: [Name]

CHECKED BY: [Name]

DATE: [Date]

PREPARED BY: [Name]

CHECKED BY: [Name]

DATE: [Date]

APPROVED BY: [Signature]

DATE: [Date]

PROJECT NUMBER: 17/05/01

PROJECT NAME: REPLACEMENT FERRY PROJECT HAMILTON DEPOT HAMILTON

ENGINEER: BERMUDA

CONTRACT NO.: [Number]

SCALE: 1/8" = 1'-0"

SHEET NUMBER: E1

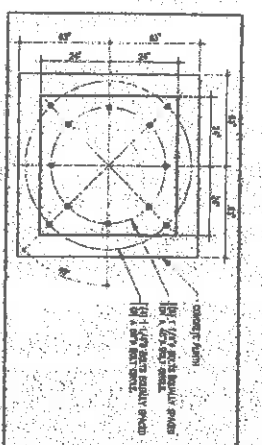
REVISION: [Mark]

THE MINISTRY OF WORKS AND ENGINEERING

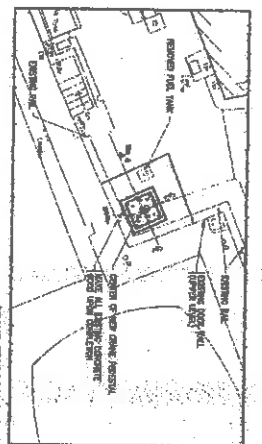
Prepared by: **Structures Section**
 Drawn by: **Structures Section**
 Checked by: **Structures Section**
 Date: **11/12/01**

NO.	DESCRIPTION	DATE	DATE

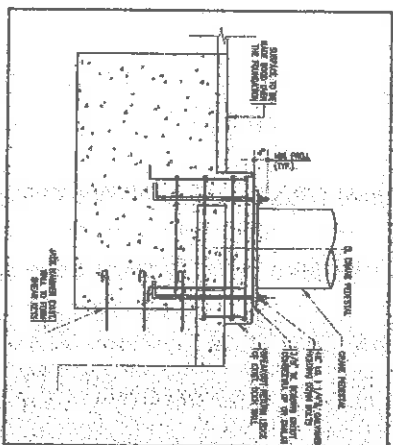
DRAWN FOR: **STRUCTURES SECTION**
 CHECKED BY: **STRUCTURES SECTION**
 DATE: **11/12/01**



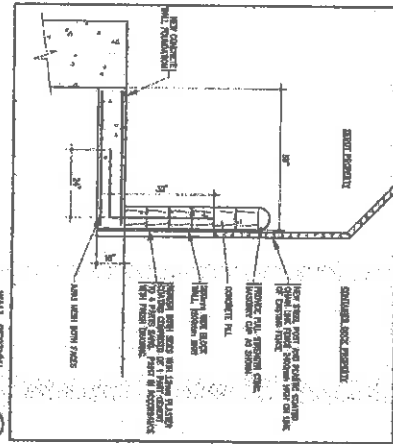
CRANE BEARING PLAN



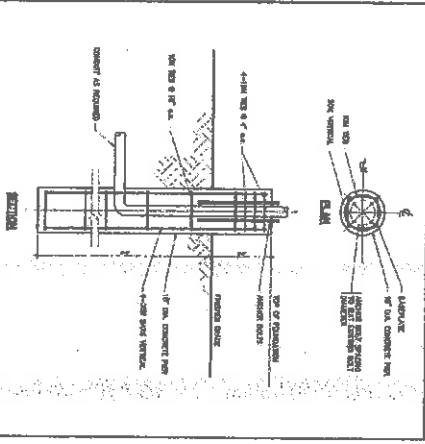
CRANE EXHAUSTION PLAN



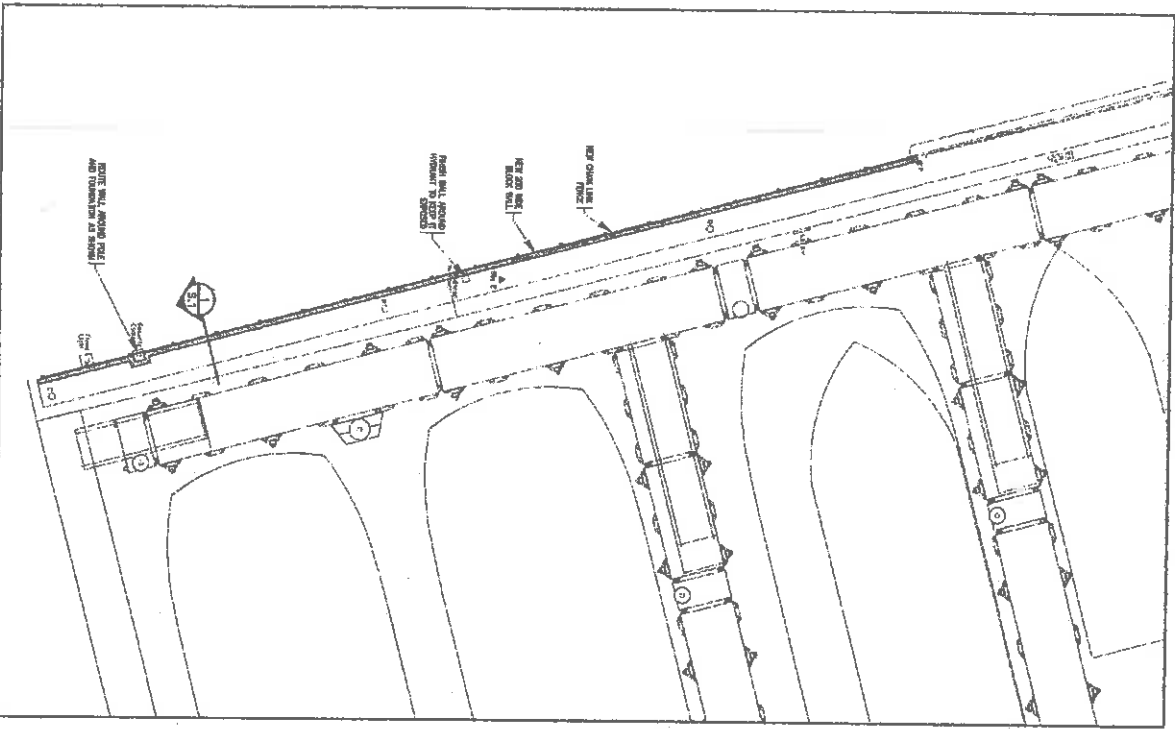
SECTION THROUGH CRANE EXHAUSTION



WALL SECTION



LIGHT STANDARDS FIXING PLAN



NEW WALL & CRANE PLAN

REPLACEMENT FERRY PROJECT HAMILTON DEPOT
BERGUDA
 DRAWING FILE NO: 2000 R-16
 PROJECT NO: 61/26/01
 PROJECT NAME: REPLACEMENT FERRY PROJECT HAMILTON DEPOT
 PROJECT ENGINEER: BERGUDA
 PROJECT CHECKER: BERGUDA
 PROJECT DATE: 11/12/01
 PROJECT NO: 61/26/01

SHEET NUMBER: 51
 REVISION: Δ

THE MINISTRY OF
WORKS AND
ENGINEERING

705, Rue Notre-Dame-Ouest, Tower B, Montreal,
Quebec H3T 1N6
Tél. (514) 944-6100

Structures Section

GENERAL NOTES

ISSUED FOR	BUFILE NO	17/02/01
APPROVED BY	DATE	
CHECKED BY	DATE	
DESIGNED BY	DATE	
DATE		
CHECKED BY	DATE	
APPROVED BY	DATE	

PROJECT NUMBER	17/02/01
APPROVED BY	
DATE	

REPLACEMENT
FERREY PROJECT
HAMILTON DEPOT
HAMILTON

REVISION 1

DATE: APR 11

BY: [Signature]

DATE: APR 11

BY: [Signature]

STRUCTURAL FUEL PIPING

PART 1 - PRODUCT

- 1.1. Fuel piping shall be fabricated from 304 or 316 stainless steel, unless otherwise specified.
- 1.2. Fuel piping shall be fabricated from 304 or 316 stainless steel, unless otherwise specified.
- 1.3. Fuel piping shall be fabricated from 304 or 316 stainless steel, unless otherwise specified.
- 1.4. Fuel piping shall be fabricated from 304 or 316 stainless steel, unless otherwise specified.
- 1.5. Fuel piping shall be fabricated from 304 or 316 stainless steel, unless otherwise specified.
- 1.6. Fuel piping shall be fabricated from 304 or 316 stainless steel, unless otherwise specified.
- 1.7. Fuel piping shall be fabricated from 304 or 316 stainless steel, unless otherwise specified.
- 1.8. Fuel piping shall be fabricated from 304 or 316 stainless steel, unless otherwise specified.
- 1.9. Fuel piping shall be fabricated from 304 or 316 stainless steel, unless otherwise specified.
- 1.10. Fuel piping shall be fabricated from 304 or 316 stainless steel, unless otherwise specified.

FUEL SYSTEM

PART 1 - PRODUCT

- 1.1. Fuel system shall be fabricated from 304 or 316 stainless steel, unless otherwise specified.
- 1.2. Fuel system shall be fabricated from 304 or 316 stainless steel, unless otherwise specified.
- 1.3. Fuel system shall be fabricated from 304 or 316 stainless steel, unless otherwise specified.
- 1.4. Fuel system shall be fabricated from 304 or 316 stainless steel, unless otherwise specified.
- 1.5. Fuel system shall be fabricated from 304 or 316 stainless steel, unless otherwise specified.
- 1.6. Fuel system shall be fabricated from 304 or 316 stainless steel, unless otherwise specified.
- 1.7. Fuel system shall be fabricated from 304 or 316 stainless steel, unless otherwise specified.
- 1.8. Fuel system shall be fabricated from 304 or 316 stainless steel, unless otherwise specified.
- 1.9. Fuel system shall be fabricated from 304 or 316 stainless steel, unless otherwise specified.
- 1.10. Fuel system shall be fabricated from 304 or 316 stainless steel, unless otherwise specified.

UNDERGROUND STORAGE TANKS

PART 1 - PRODUCT

- 1.1. UST shall be fabricated from 304 or 316 stainless steel, unless otherwise specified.
- 1.2. UST shall be fabricated from 304 or 316 stainless steel, unless otherwise specified.
- 1.3. UST shall be fabricated from 304 or 316 stainless steel, unless otherwise specified.
- 1.4. UST shall be fabricated from 304 or 316 stainless steel, unless otherwise specified.
- 1.5. UST shall be fabricated from 304 or 316 stainless steel, unless otherwise specified.
- 1.6. UST shall be fabricated from 304 or 316 stainless steel, unless otherwise specified.
- 1.7. UST shall be fabricated from 304 or 316 stainless steel, unless otherwise specified.
- 1.8. UST shall be fabricated from 304 or 316 stainless steel, unless otherwise specified.
- 1.9. UST shall be fabricated from 304 or 316 stainless steel, unless otherwise specified.
- 1.10. UST shall be fabricated from 304 or 316 stainless steel, unless otherwise specified.

COMPRESSED AIR SYSTEM

PART 1 - PRODUCT

- 1.1. Compressed air system shall be fabricated from 304 or 316 stainless steel, unless otherwise specified.
- 1.2. Compressed air system shall be fabricated from 304 or 316 stainless steel, unless otherwise specified.
- 1.3. Compressed air system shall be fabricated from 304 or 316 stainless steel, unless otherwise specified.
- 1.4. Compressed air system shall be fabricated from 304 or 316 stainless steel, unless otherwise specified.
- 1.5. Compressed air system shall be fabricated from 304 or 316 stainless steel, unless otherwise specified.
- 1.6. Compressed air system shall be fabricated from 304 or 316 stainless steel, unless otherwise specified.
- 1.7. Compressed air system shall be fabricated from 304 or 316 stainless steel, unless otherwise specified.
- 1.8. Compressed air system shall be fabricated from 304 or 316 stainless steel, unless otherwise specified.
- 1.9. Compressed air system shall be fabricated from 304 or 316 stainless steel, unless otherwise specified.
- 1.10. Compressed air system shall be fabricated from 304 or 316 stainless steel, unless otherwise specified.

DOMESTIC WATER PIPING AND FITTINGS

PART 1 - PRODUCT

- 1.1. Domestic water piping shall be fabricated from 304 or 316 stainless steel, unless otherwise specified.
- 1.2. Domestic water piping shall be fabricated from 304 or 316 stainless steel, unless otherwise specified.
- 1.3. Domestic water piping shall be fabricated from 304 or 316 stainless steel, unless otherwise specified.
- 1.4. Domestic water piping shall be fabricated from 304 or 316 stainless steel, unless otherwise specified.
- 1.5. Domestic water piping shall be fabricated from 304 or 316 stainless steel, unless otherwise specified.
- 1.6. Domestic water piping shall be fabricated from 304 or 316 stainless steel, unless otherwise specified.
- 1.7. Domestic water piping shall be fabricated from 304 or 316 stainless steel, unless otherwise specified.
- 1.8. Domestic water piping shall be fabricated from 304 or 316 stainless steel, unless otherwise specified.
- 1.9. Domestic water piping shall be fabricated from 304 or 316 stainless steel, unless otherwise specified.
- 1.10. Domestic water piping shall be fabricated from 304 or 316 stainless steel, unless otherwise specified.

DOMESTIC WASTE AND VENT PIPING - PLASTIC

PART 1 - PRODUCT

- 1.1. Domestic waste and vent piping shall be fabricated from 304 or 316 stainless steel, unless otherwise specified.
- 1.2. Domestic waste and vent piping shall be fabricated from 304 or 316 stainless steel, unless otherwise specified.
- 1.3. Domestic waste and vent piping shall be fabricated from 304 or 316 stainless steel, unless otherwise specified.
- 1.4. Domestic waste and vent piping shall be fabricated from 304 or 316 stainless steel, unless otherwise specified.
- 1.5. Domestic waste and vent piping shall be fabricated from 304 or 316 stainless steel, unless otherwise specified.
- 1.6. Domestic waste and vent piping shall be fabricated from 304 or 316 stainless steel, unless otherwise specified.
- 1.7. Domestic waste and vent piping shall be fabricated from 304 or 316 stainless steel, unless otherwise specified.
- 1.8. Domestic waste and vent piping shall be fabricated from 304 or 316 stainless steel, unless otherwise specified.
- 1.9. Domestic waste and vent piping shall be fabricated from 304 or 316 stainless steel, unless otherwise specified.
- 1.10. Domestic waste and vent piping shall be fabricated from 304 or 316 stainless steel, unless otherwise specified.

